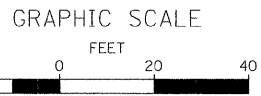
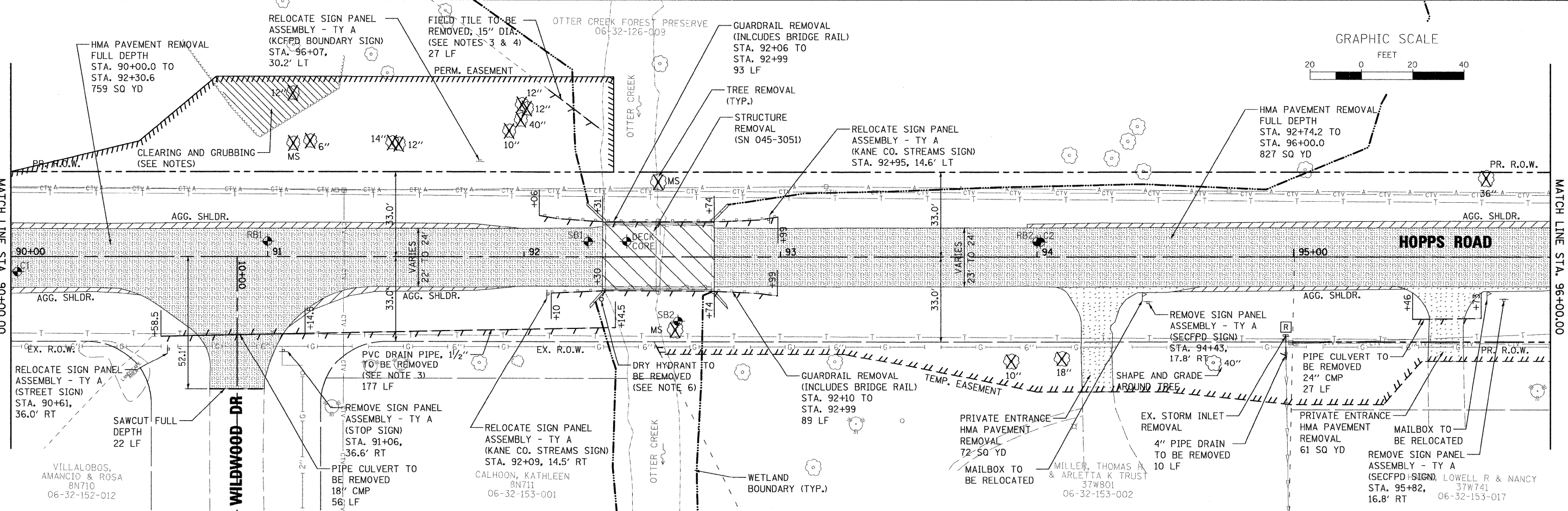
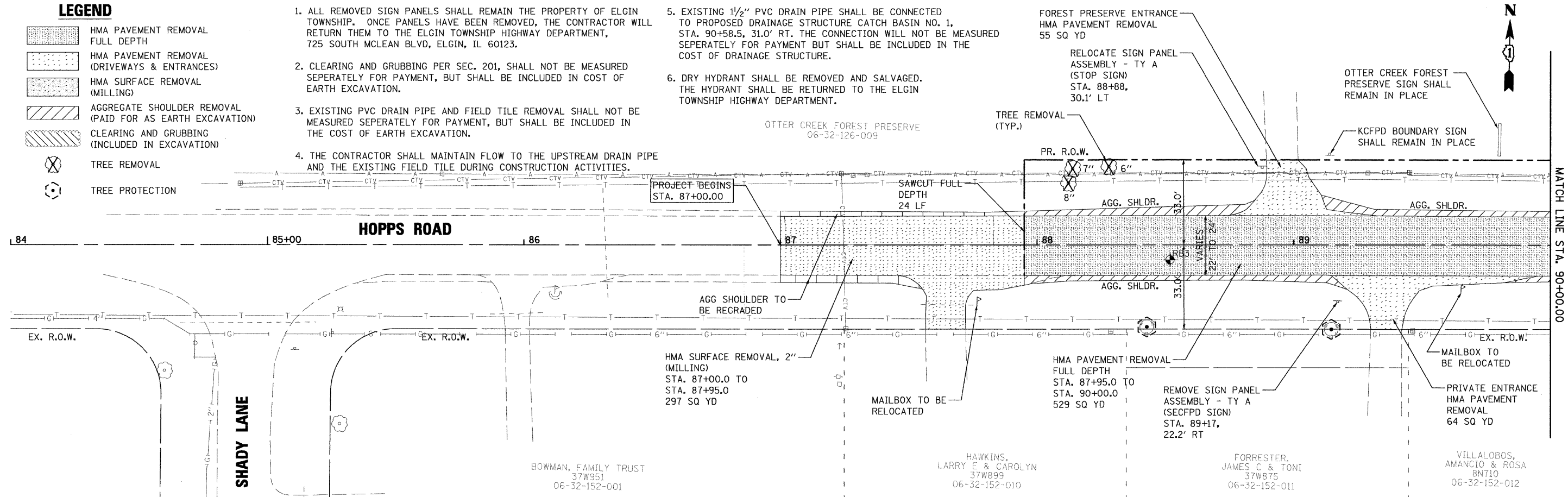


LEGEND

- HMA PAVEMENT REMOVAL FULL DEPTH
- HMA PAVEMENT REMOVAL (DRIVEWAYS & ENTRANCES)
- HMA SURFACE REMOVAL (MILLING)
- AGGREGATE SHOULDER REMOVAL (PAID FOR AS EARTH EXCAVATION)
- CLEARING AND GRUBBING (INCLUDED IN EXCAVATION)
- TREE REMOVAL
- TREE PROTECTION

NOTES

1. ALL REMOVED SIGN PANELS SHALL REMAIN THE PROPERTY OF ELGIN TOWNSHIP. ONCE PANELS HAVE BEEN REMOVED, THE CONTRACTOR WILL RETURN THEM TO THE ELGIN TOWNSHIP HIGHWAY DEPARTMENT, 725 SOUTH MCLEAN BLVD, ELGIN, IL 60123.
2. CLEARING AND GRUBBING PER SEC. 201, SHALL NOT BE MEASURED SEPERATELY FOR PAYMENT, BUT SHALL BE INCLUDED IN COST OF EARTH EXCAVATION.
3. EXISTING PVC DRAIN PIPE AND FIELD TILE REMOVAL SHALL NOT BE MEASURED SEPERATELY FOR PAYMENT, BUT SHALL BE INCLUDED IN THE COST OF EARTH EXCAVATION.
4. THE CONTRACTOR SHALL MAINTAIN FLOW TO THE UPSTREAM DRAIN PIPE AND THE EXISTING FIELD TILE DURING CONSTRUCTION ACTIVITIES.
5. EXISTING 1/2" PVC DRAIN PIPE SHALL BE CONNECTED TO PROPOSED DRAINAGE STRUCTURE CATCH BASIN NO. 1, STA. 90+58.5, 31.0' RT. THE CONNECTION WILL NOT BE MEASURED SEPERATELY FOR PAYMENT BUT SHALL BE INCLUDED IN THE COST OF DRAINAGE STRUCTURE.
6. DRY HYDRANT SHALL BE REMOVED AND SALVAGED. THE HYDRANT SHALL BE RETURNED TO THE ELGIN TOWNSHIP HIGHWAY DEPARTMENT.



FILE NAME = P:\CIBBEL\MEST Projects\2005\09-0073 Hopps\PHU\G\1\Dgn\Sh\REM-1.dgn

WILLS BURKE KELSEY ASSOCIATES LTD.
 116 West Main Street, Suite 201
 St. Charles, Illinois 60174

USER NAME = nparris	DESIGNED - KMA	REVISED -
PLOT SCALE = AS SHOWN	DRAWN - NDP	REVISED -
PLOT DATE = 1/3/2012	CHECKED - RPD	REVISED -
	DATE - 12/19/11	REVISED -

**STATE OF ILLINOIS
DEPARTMENT OF TRANSPORTATION**

SCALE: AS SHOWN	SHEET NO. 19 OF 80 SHEETS	STA. TO STA.
-----------------	---------------------------	--------------

**EXISTING CONDITIONS
& REMOVAL PLAN**

T.R. RTE. 2442	SECTION 04-08107-00-BR	COUNTY KANE	TOTAL SHEETS 80	SHEET NO. 19
CONTRACT NO. 63644				
FED. ROAD DIST. NO. ILLINOIS FED. AID PROJECT				