

NOTE:  
 CONTRACTOR SHALL RESHAPE/REGRADE THE EXISTING SHOULDER TO MEET THE NEW EDGE OF PAVEMENT. RESHAPING/REGRADEING WILL BE PAID PER UNIT FOR GRADING AND SHAPING SHOULDERS. IF ADDITIONAL AGGREGATE SHOULDER MATERIAL IS REQUIRED, THE AGGREGATE MATERIAL SHALL BE INCLUDED IN THE COST GRADING AND SHAPING SHOULDERS.

HMA SURF COURSE, MIX D, N50, 2"  
 HMA BASE COURSE, IL-19.0, N50, 8"  
 SUB-BASE GRAN MATERIAL, TY B, 4"



GRADING AND SHAPING SHOULDERS  
 STA 87+00 TO STA 88+95

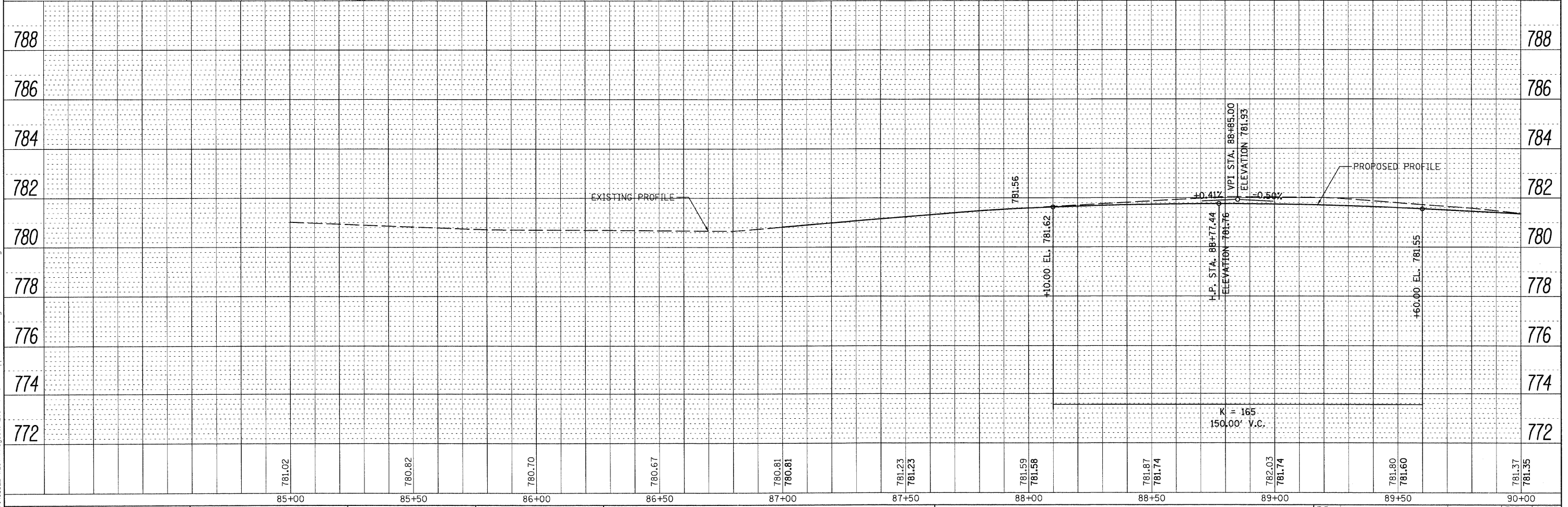
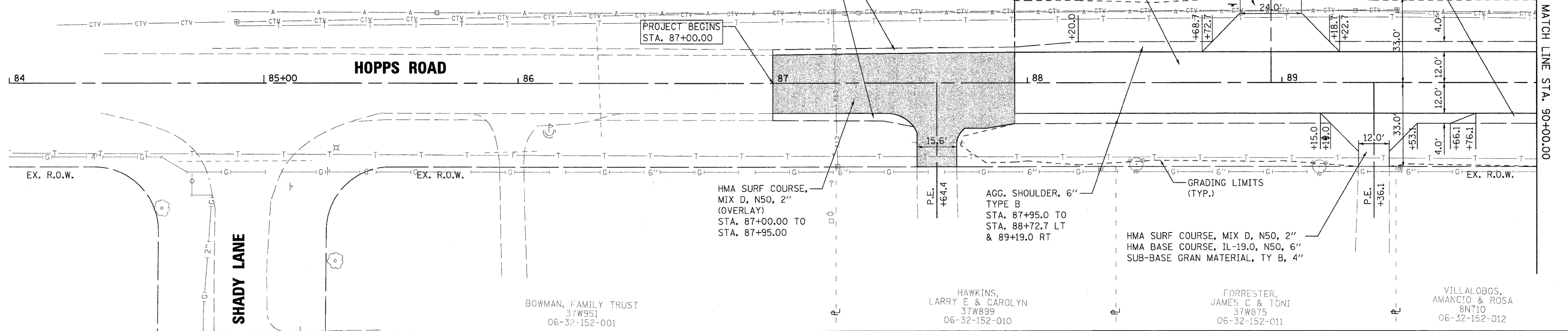
HMA SURF COURSE, MIX D, N50, 2"  
 HMA BINDER COURSE, IL-19.0, N50, 7 1/2"  
 AGGREGATE SUBGRADE, 12"  
 STA. 87+95.0 TO 90+00.0

AGG. SHOULDER, 6"  
 TYPE B  
 STA. 89+18.7 LT  
 & 89+66.1 RT TO  
 STA. 90+00.0

PROJECT BEGINS  
 STA. 87+00.00

OTTER CREEK FOREST PRESERVE  
 06-32-126-009  
 R.O.W. MARKER  
 495.0, 33.0' LT  
 N 1941009.006  
 E 977433.846

PR. R.O.W.



DATE	
BY	
PLAN	
SURVEYED	
ALIGNED	
CHECKED	
NO. OF	
DATE	
NO.	

DATE	
BY	
PROFILE	
SURVEYED	
GRADES	
CHECKED	
NO. OF	
DATE	
NO.	

FILE NAME = PACBBEL WEST Projects\2009\09-0073 Hopps\Plan\Profile-1.dwg

**WILLS BURKE KELSEY ASSOCIATES LTD.**  
 116 West Main Street, Suite 201  
 St. Charles, Illinois 60174

USER NAME = nparris	DESIGNED - KMA	REVISED -
PLOT SCALE = AS SHOWN	DRAWN - NDP	REVISED -
PLOT DATE = 12/16/2011	CHECKED - RPD	REVISED -
	DATE - 12/19/11	REVISED -

**STATE OF ILLINOIS  
 DEPARTMENT OF TRANSPORTATION**

**PLAN & PROFILE**

SCALE: AS SHOWN SHEET NO. 21 OF 80 SHEETS STA. TO STA.

T.R. RTE.	SECTION	COUNTY	TOTAL SHEETS	SHEET NO.
2442	04-08107-00-BR	KANE	80	21
CONTRACT NO. 63644				
FED. ROAD DIST. NO. ILLINOIS FED. AID PROJECT				