

NORTH EDGE OF SHOULDER

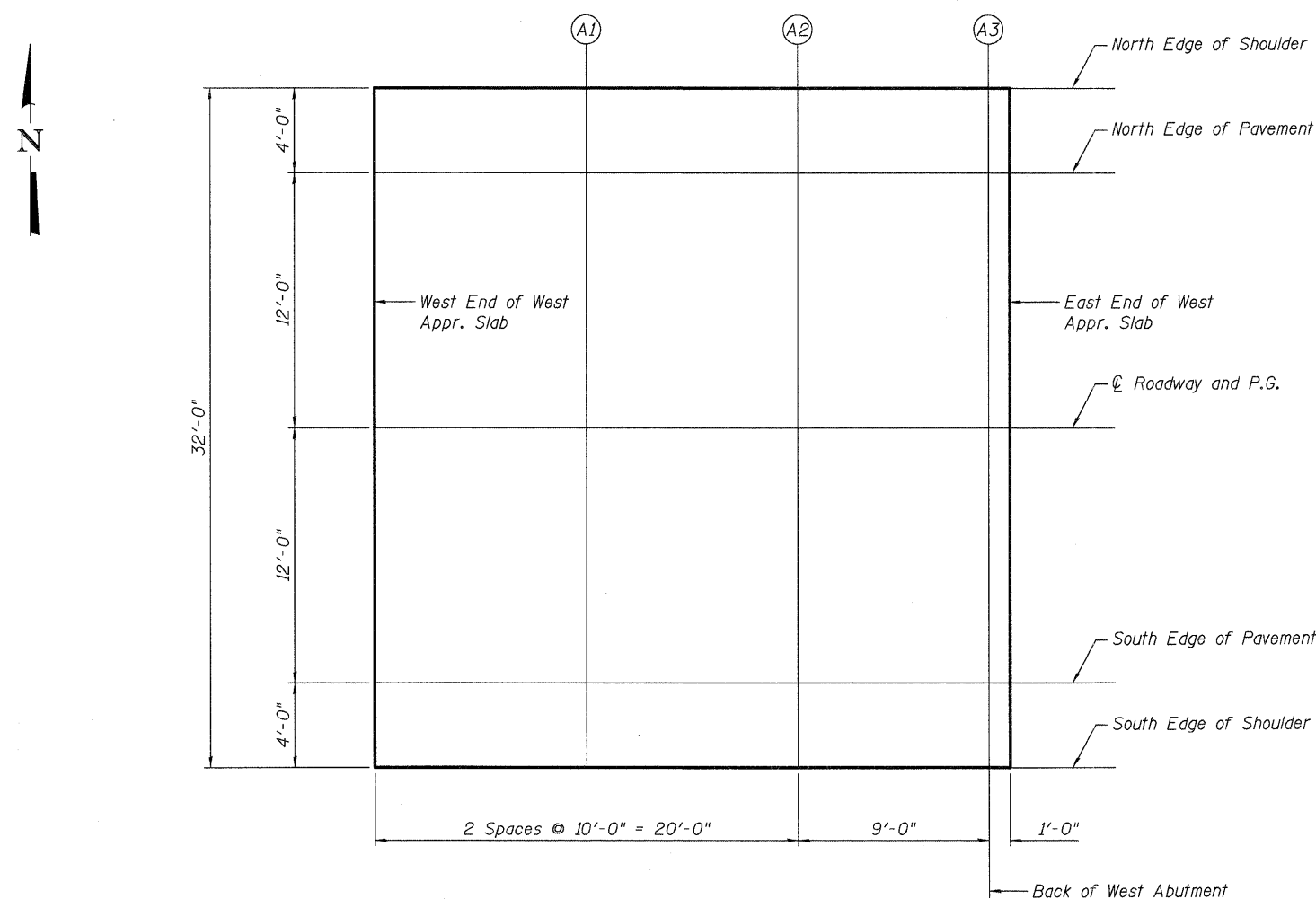
Location	Station	Offset	Theoretical Grade Elevations
W. End W. Appr. Slab	91+90.12	-16.00	780.15
A1	92+00.12	-16.00	780.10
A2	92+10.12	-16.00	780.05
A3	92+19.12	-16.00	780.00
E. End W. Appr. Slab	92+20.12	-16.00	780.00

NORTH EDGE OF PAVEMENT

Location	Station	Offset	Theoretical Grade Elevations
W. End W. Appr. Slab	91+90.12	-12.00	780.21
A1	92+00.12	-12.00	780.16
A2	92+10.12	-12.00	780.11
A3	92+19.12	-12.00	780.06
E. End W. Appr. Slab	92+20.12	-12.00	780.06

℄ ROADWAY & P.G.

Location	Station	Offset	Theoretical Grade Elevations
W. End W. Appr. Slab	91+90.12	0.00	780.40
A1	92+00.12	0.00	780.35
A2	92+10.12	0.00	780.30
A3	92+19.12	0.00	780.25
E. End W. Appr. Slab	92+20.12	0.00	780.25



PLAN
West Approach

SOUTH EDGE OF PAVEMENT

Location	Station	Offset	Theoretical Grade Elevations
W. End W. Appr. Slab	91+90.12	12.00	780.21
A1	92+00.12	12.00	780.16
A2	92+10.12	12.00	780.11
A3	92+19.12	12.00	780.06
E. End W. Appr. Slab	92+20.12	12.00	780.06

SOUTH EDGE OF SHOULDER

Location	Station	Offset	Theoretical Grade Elevations
W. End W. Appr. Slab	91+90.12	16.00	780.15
A1	92+00.12	16.00	780.10
A2	92+10.12	16.00	780.05
A3	92+19.12	16.00	780.00
E. End W. Appr. Slab	92+20.12	16.00	780.00

FILE NAME = P:\CIBBEL WEST - Projects\2009\09-0073 - Hopper\PHIL\Structural\Drawings\Final\Plan\045-3180-TopApprSlabElev-West.dgn

E-AS

7-1-10



USER NAME = nparrris	DESIGNED - DLS	REVISED -
	CHECKED - AEU	REVISED -
PLOT SCALE =	DRAWN - DLS	REVISED -
PLOT DATE = 12/16/2011	CHECKED - AEU	REVISED -

STATE OF ILLINOIS
DEPARTMENT OF TRANSPORTATION

TOP OF WEST APPROACH SLAB ELEVATIONS
STRUCTURE NO. 045-3180

SHEET NO. 3 OF 17 SHEETS

T.R. RTE.	SECTION	COUNTY	TOTAL SHEETS	SHEET NO.
2442	04-08107-00-BR	KANE	80	37
FED. ROAD DIST. NO. ILLINOIS FED. AID PROJECT			CONTRACT NO. 63644	