

PROGRAM AND OFFICE ENGINEER CHARLES F. RIDDLE, P.E. 847-705-4406, SCHAUMBURG  
 CONSULTING ENGINEER: ENGINEERING ENTERPRISES, INC. CONTACT: JAMES R. LENZINI 630-466-6700

FOR INDEX OF SHEETS  
 AND HIGHWAY STANDARDS  
 SEE SHEET NO. 2

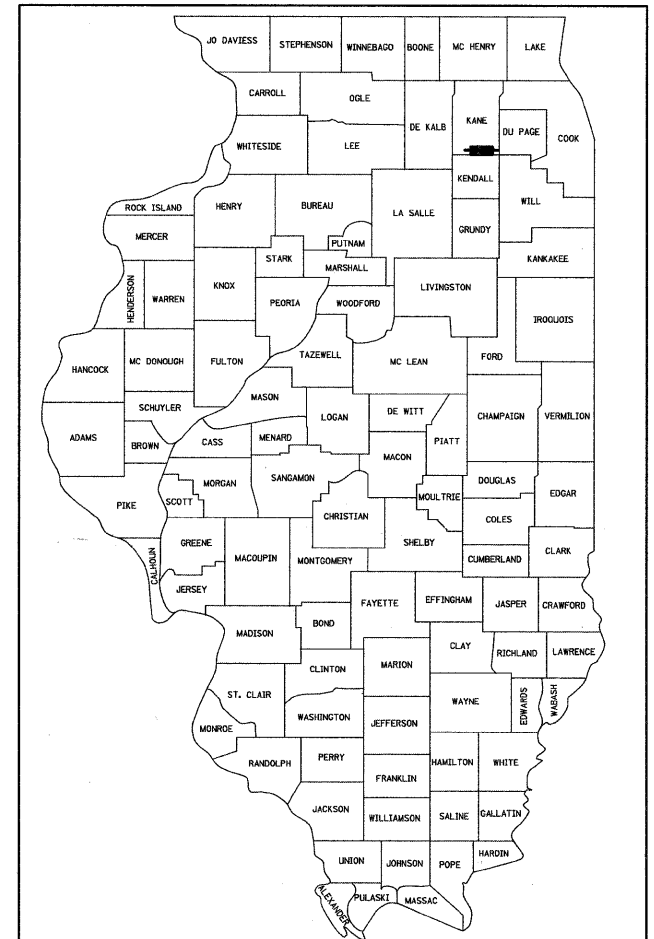
STATE OF ILLINOIS  
 DEPARTMENT OF TRANSPORTATION  
 DIVISION OF HIGHWAYS

PLANS FOR PROPOSED  
 FEDERAL AID HIGHWAY

FAU 3895 (PRAIRIE STREET)  
 OVER BLACKBERRY CREEK  
 BRIDGE REHABILITATION  
 SECTION: 08-15104-01-BR  
 PROJECT NUMBER: BHOS-0089(134)  
 SUGAR GROVE TOWNSHIP  
 KANE COUNTY  
 JOB NUMBER: C-91-167-09

CONTRACT NO. 63661

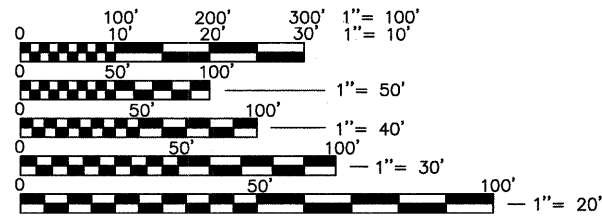
F.A.U. RTE.	SECTION	COUNTY	TOTAL SHEETS	SHEET NO.
3895	08-15104-01-BR	KANE	38	1



LOCATION OF SECTION INDICATED THUS: -

PROJECT LOCATED IN THE  
 SUGAR GROVE TOWNSHIP  
 ROAD DISTRICT,  
 KANE COUNTY, IL

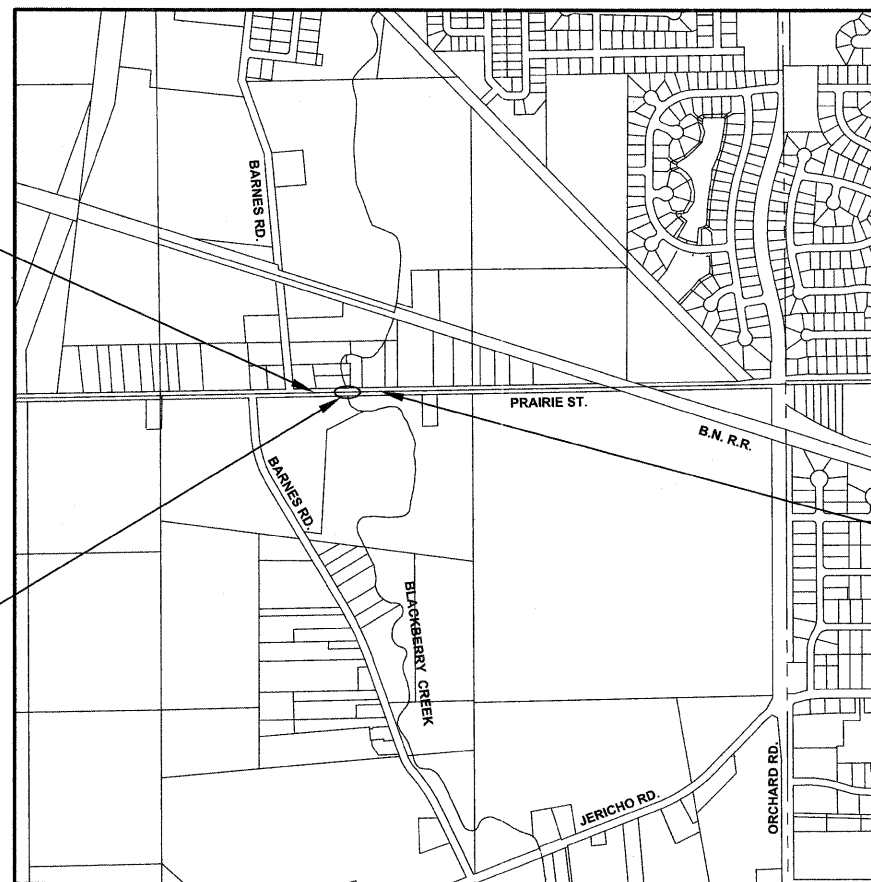
DESIGN DESIGNATION  
 COLLECTOR  
 ADT: 2,050 (2010)  
 ADT: 5,700 (2022)  
 POSTED SPEED: 40 MPH  
 DESIGN SPEED: 40 MPH  
 STRUCTURE NO: 045-3094 (EXISTING)  
 STRUCTURE NO: 045-3094 (PROPOSED)



FULL SIZE PLANS HAVE BEEN PREPARED USING  
 STANDARD ENGINEERING SCALES, REDUCED SIZED  
 PLANS WILL NOT CONFORM TO STANDARD  
 SCALES, IN MAKING MEASUREMENTS ON REDUCED  
 PLANS, THE ABOVE SCALES MAY BE USED.

PROJECT BEGINS  
 STA. 162+00  
 PRAIRIE ST.

SN 045-3094



SW 1/4 SECT. 24, NW 1/4 SECT. 25  
 T38N, R7E, 3RD PM, SUGAR GROVE TOWNSHIP  
**LOCATION MAP**  
 TOTAL LENGTH OF PROJECT = 565 FEET (0.107 MILES)

PROJECT ENDS  
 STA. 167+65  
 PRAIRIE ST.

**JULIE**  
 JOINT  
 UTILITY  
 LOCATION  
 INFORMATION FOR  
 EXCAVATION  
 CALL 811

Know what's below.  
 Call before you dig.

DATE: 12/15/2011  
 BY: James R. Lenzini  
 JAMES R. LENZINI  
 LICENSE EXPIRES: NOVEMBER 30, 2013  
 SHEETS: 1-2, 8-13, & 31-38



SEAL

DATE: 12/15/2011  
 BY: David S. Bronars  
 DAVID S. BRONARS  
 LICENSE EXPIRES: NOVEMBER 30, 2012  
 SHEETS: 3-5, 14-30 ONLY



SEAL

**Engineering Enterprises, Inc.**  
 CONSULTING ENGINEERS  
 52 Wheeler Road  
 Sugar Grove, Illinois 60554  
 630.466.6700 - www.eeiweb.com

**RS&H**  
 IMPROVING YOUR WORLD

PRINTED BY THE AUTHORITY OF THE STATE OF ILLINOIS

Plotted: December 15, 2011 @ 2:31 PM By: Kris Pung - Tab: 01\_CVR (23x34)

Path: \\S05P001\VC0812\DWG\SENT\2011-12-15\_RS&H\_VC0812-COVER