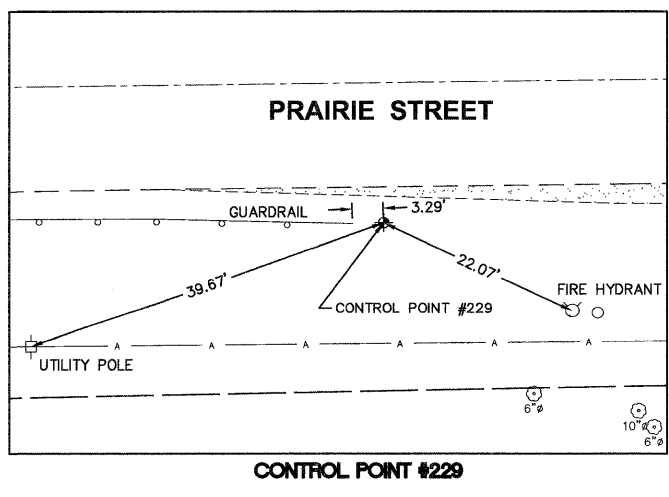
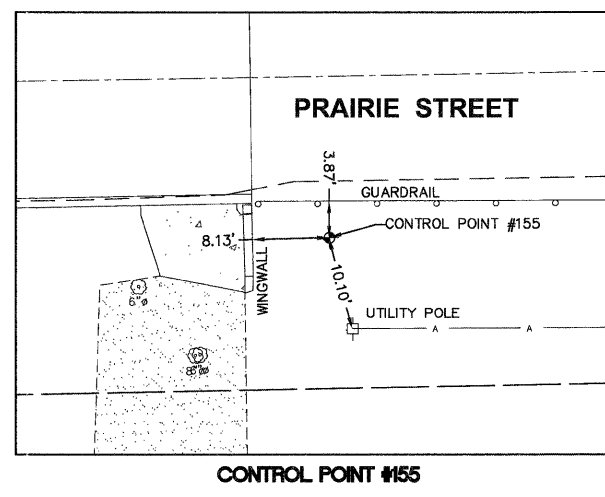
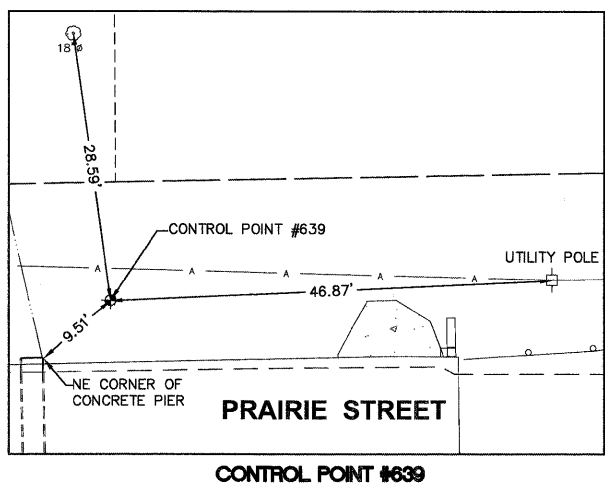
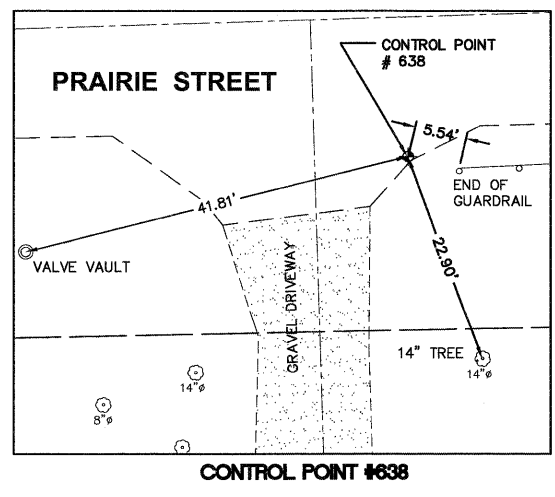
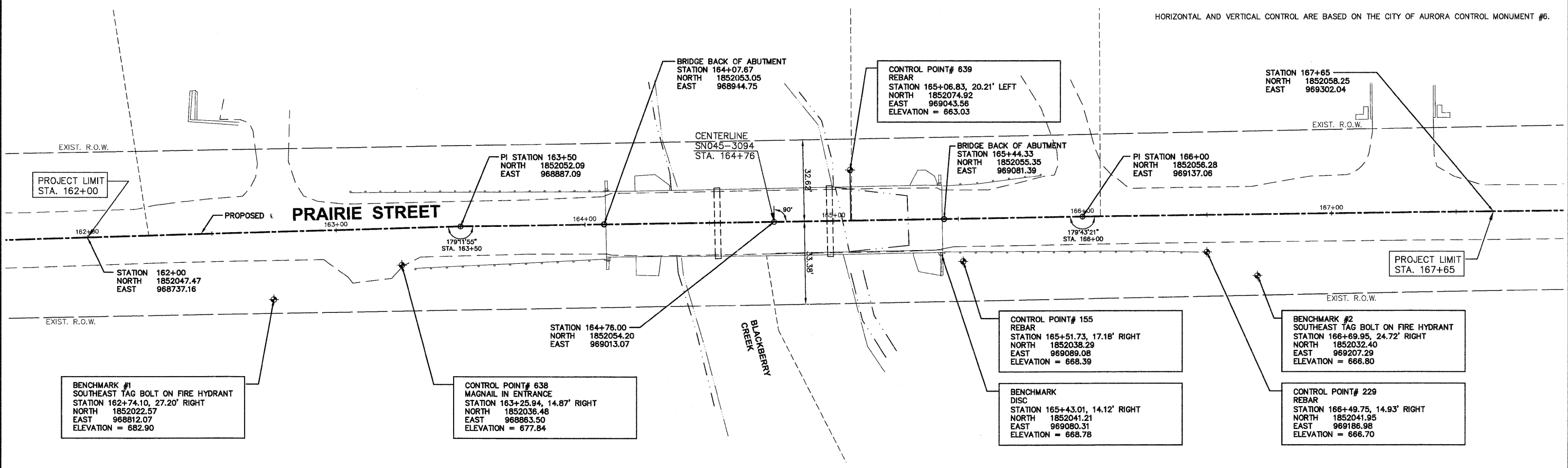


HORIZONTAL AND VERTICAL CONTROL ARE BASED ON THE CITY OF AURORA CONTROL MONUMENT #6.



Plotted: November 17, 2011 @ 9:39 AM By: Kris Pung - Tab: 07 Alignment (22x34)
 COPYRIGHT © 2011 ENGINEERING ENTERPRISES, INC.

Path: \\S05KPR01\K0812\DWG\JWG_FINAL_ENG\K0812-ALIGNMENT

FILE NAME	USER NAME = #USER#	DESIGNED -	REVISED -
#FILE#		DRAWN -	REVISED -
		CHECKED -	REVISED -
		DATE -	REVISED -

STATE OF ILLINOIS
DEPARTMENT OF TRANSPORTATION

ALIGNMENT, TIES AND BENCHMARKS	
PROJECT NO. BH05-0089 (134)	JOB NO. C-91-167-09
SHEET NO. 1 OF 1 SHEETS	STA. 161+80 TO STA. 167+80

F.A.U. R.T.E.	SECTION	COUNTY	TOTAL SHEETS	SHEET NO.
3895	08-15104-01-BR	KANE	38	7
FED. ROAD DIST. NO. 1 ILLINOIS FED. AID PROJECT			CONTRACT NO. 63661	