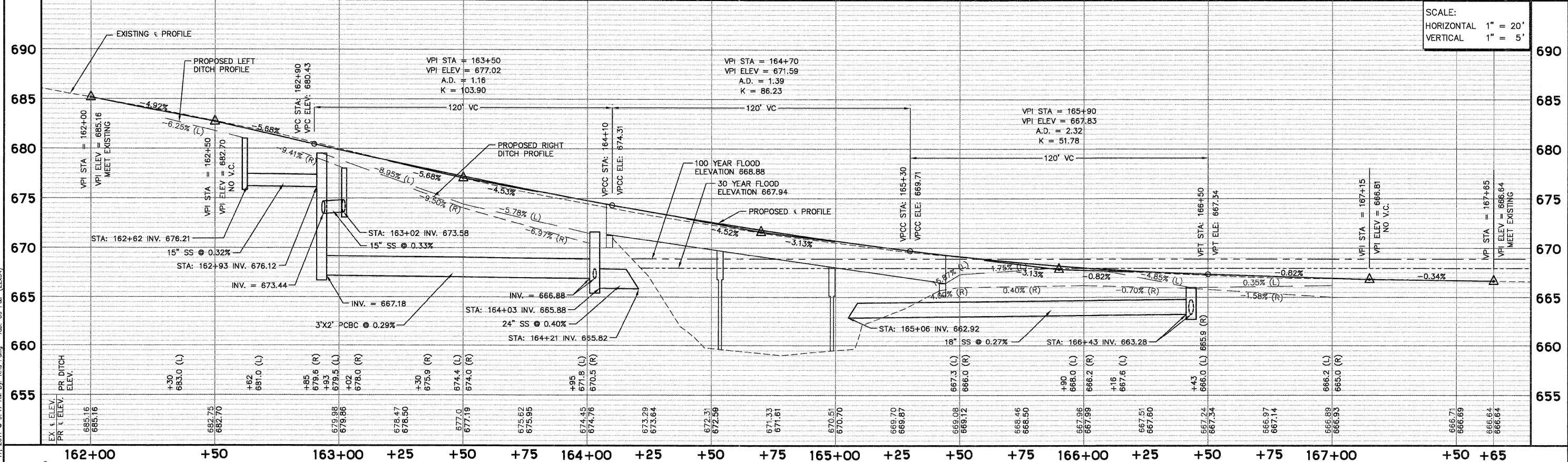


NOTE:
TOP OF CURB SHALL BE TRANSITIONED
IN 2' AT DEPRESSED CURB (TYP.)



Copyright © 2011 ENGINEERING ENTERPRISES, INC.
 FILE NAME: BHOS-0089-134-01-167-09
 FILE#: 08-15104-01-BR
 PLOT SCALE = 1"=20'
 PLOT DATE = 08/14/11

DESIGNED -	REVISOR -
DRAWN -	REVISOR -
CHECKED -	REVISOR -
DATE -	REVISOR -

**STATE OF ILLINOIS
DEPARTMENT OF TRANSPORTATION**

PLAN AND PROFILE	
PROJECT NO. BHOS-0089 (134)	JOB NO. C-91-167-09
SHEET NO. 1 OF 1 SHEETS	STA. 161+80 TO STA. 167+80
SCALE: 1"=20'	

F.A.U. R.T.E. 3895	SECTION 08-15104-01-BR	COUNTY KANE	TOTAL SHEETS 38	SHEET NO. 9
CONTRACT NO. 63661			FED. ROAD DIST. NO. 1 ILLINOIS FED. AID PROJECT	

Printed: November 17, 2011 @ 9:47 AM By: Kris Pung - Tab: 09 P&E (22-34)
 PLOT DATE = 08/14/11

PLOT DATE = 08/14/11
 PLOT SCALE = 1"=20'