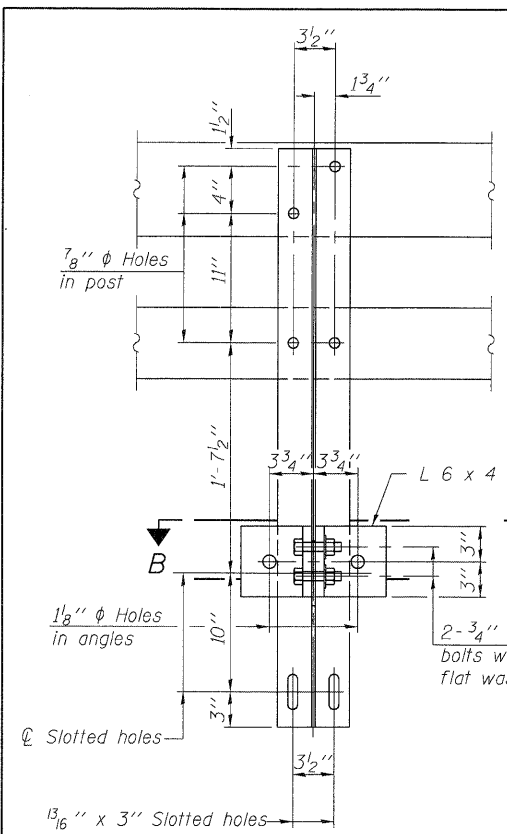
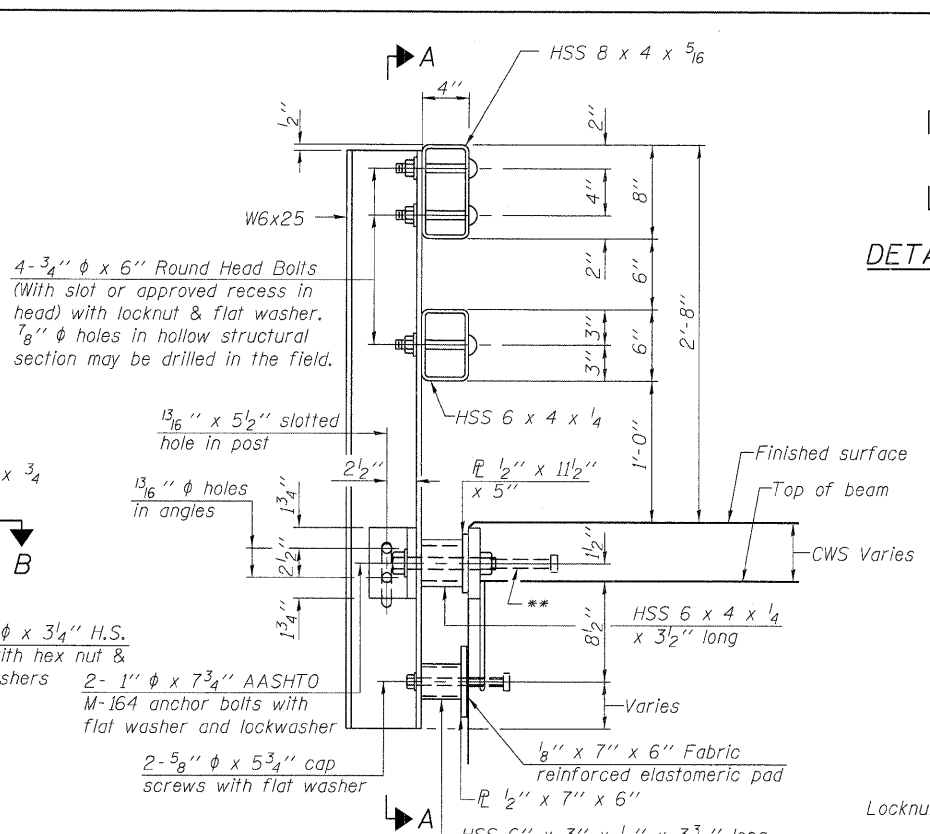


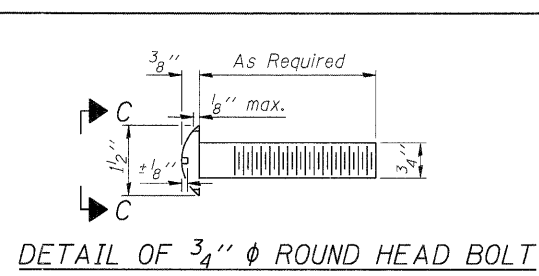
USER NAME = me-rtm
 PLOT DATE = 12/26/2011
 FILE NAME = X:\S\13-2245-2009\Project Sheets\0815104-01-Steel Railing Type SM.dgn



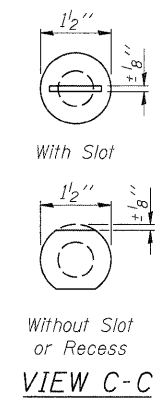
SECTION A-A



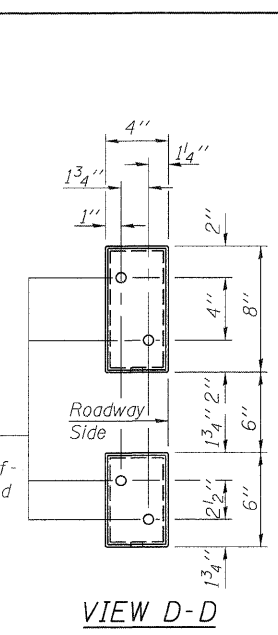
SECTION AT RAIL POST



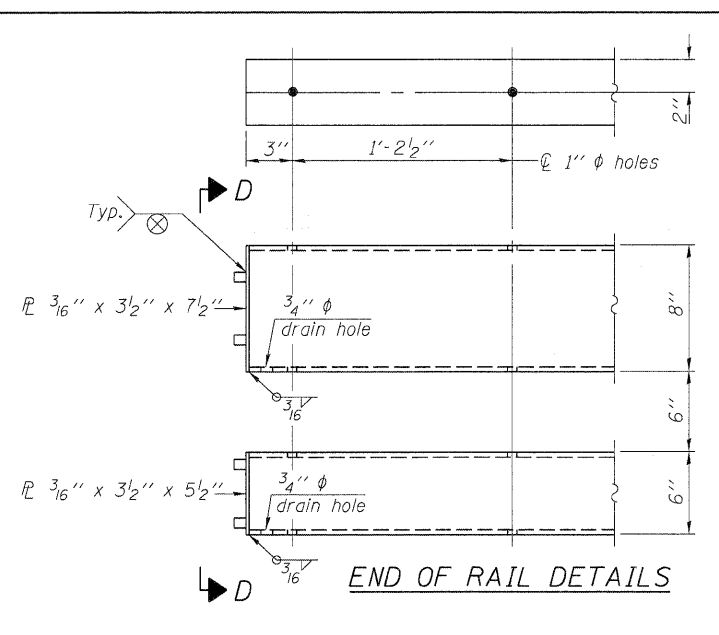
DETAIL OF 3/4" ROUND HEAD BOLT



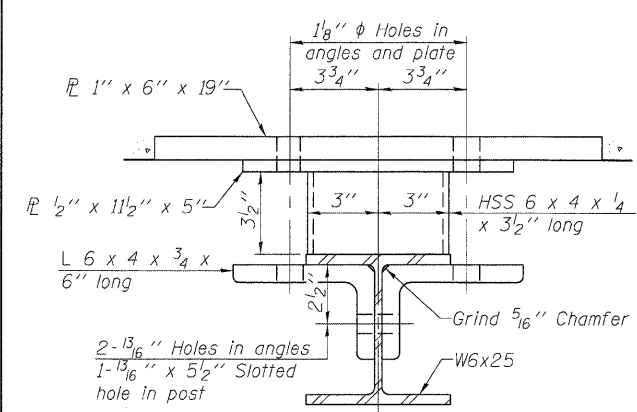
VIEW C-C



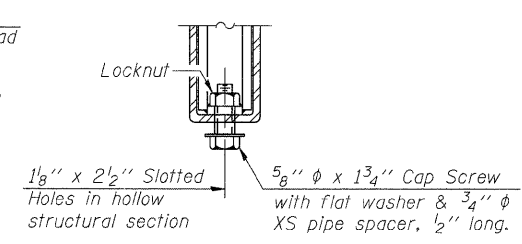
VIEW D-D



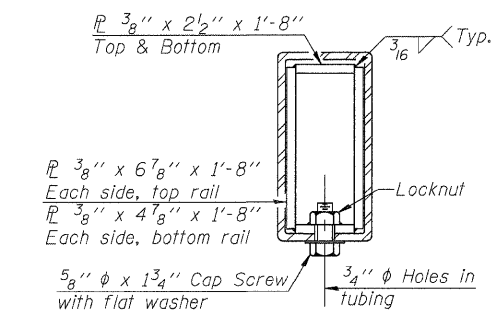
END OF RAIL DETAILS



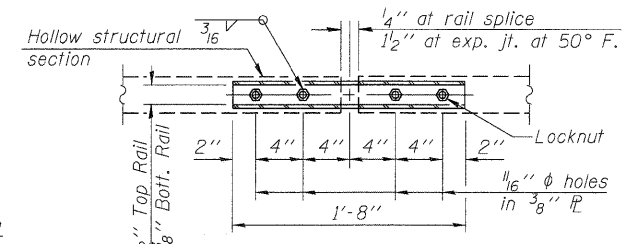
SECTION B-B



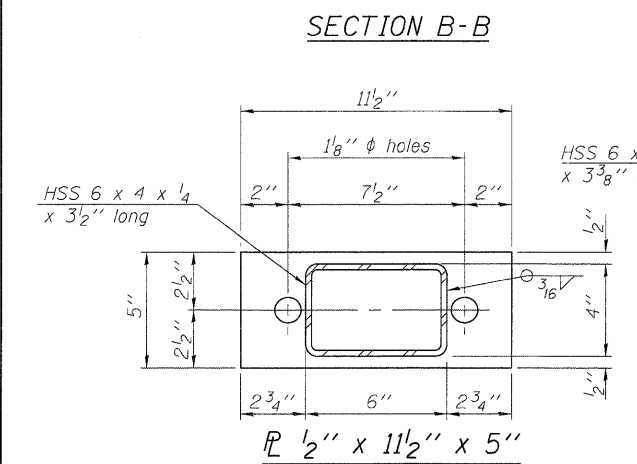
RAIL SPLICE CONNECTION AT EXPANSION JT.



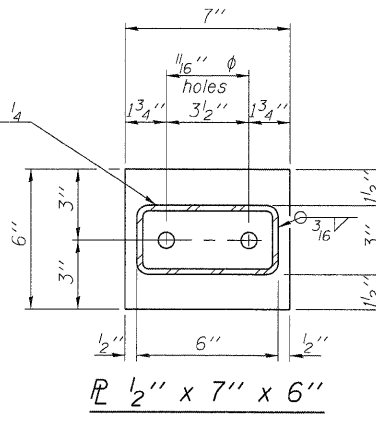
SECTION AT RAIL SPLICE



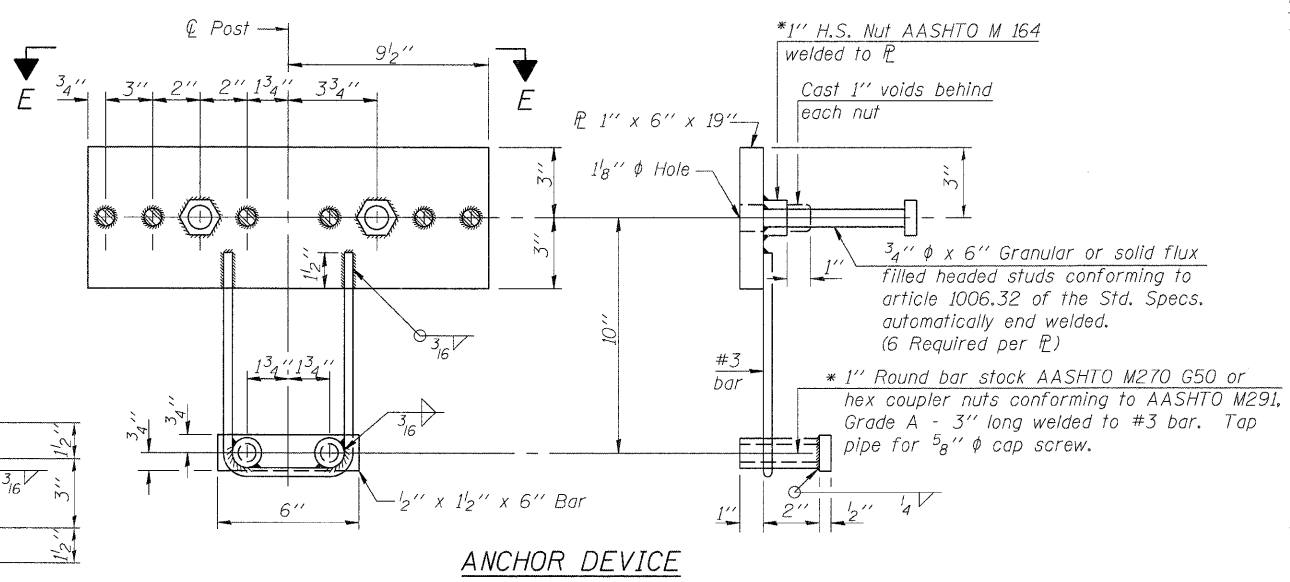
PLAN-BOTT. SPLICE R TYPICAL



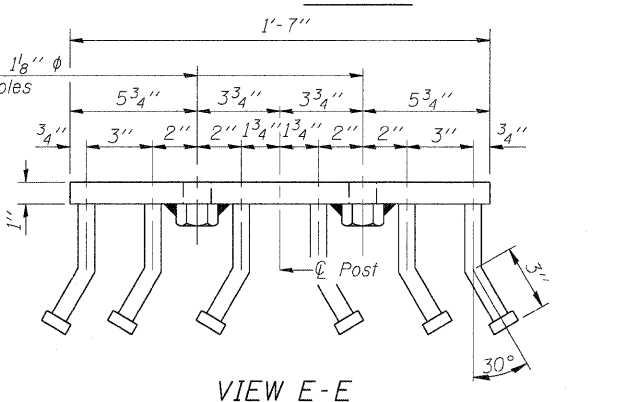
SECTION B-B



ANCHOR DEVICE



*Threaded areas shall be plugged or blocked off during casting of beam. Galvanized after fabrication.



VIEW E-E

Notes:
 All field drilled holes shall be coated with an approved zinc rich paint before erection.
 For multi-span bridges, sufficient 1/4" x 6" x 1'-2" galvanized steel shims shall be provided to align rail between adjacent spans. Cost included with Steel Railing, Type SM.
 Steel rail elements shall be galvanized according to Article 509.05 of the Standard Specifications.
 ** The studs of the anchor devices shall be placed below the top reinforcement bars and the outermost longitudinal reinforcement bar shall be placed directly above the studs of the rail post anchor device.

BILL OF MATERIAL

Item	Unit	Quantity
Steel Railing, Type SM	Foot	271

R-34CWS 7-1-10 (6'-3" Maximum Post Spacing) (5" minimum to 7 1/8" maximum CWS thickness)



DESIGNED - LM	REVISED -
CHECKED - GG	REVISED -
DRAWN - LM	REVISED -
CHECKED - DSB	REVISED -

**STATE OF ILLINOIS
 DEPARTMENT OF TRANSPORTATION**

**STEEL RAILING, TYPE SM WITH CONCRETE WEARING SURFACE
 STRUCTURE NO. 045-3094**

F.A.U. RTE. 3895	SECTION 08-15104-01-BR	COUNTY KANE	TOTAL SHEETS 38	SHEET NO. 20
			CONTRACT NO. 63661	
ILLINOIS FED. AID PROJECT				

SHEET NO. 7 OF 17 SHEETS