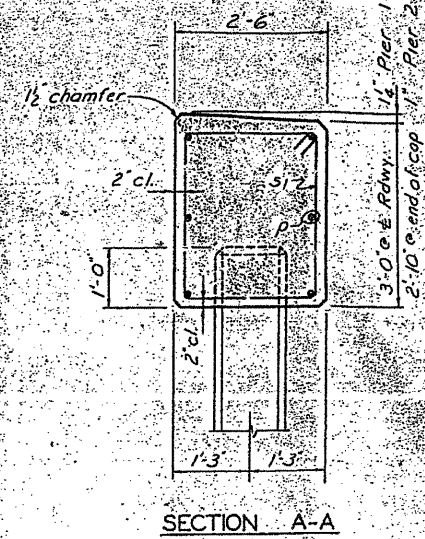
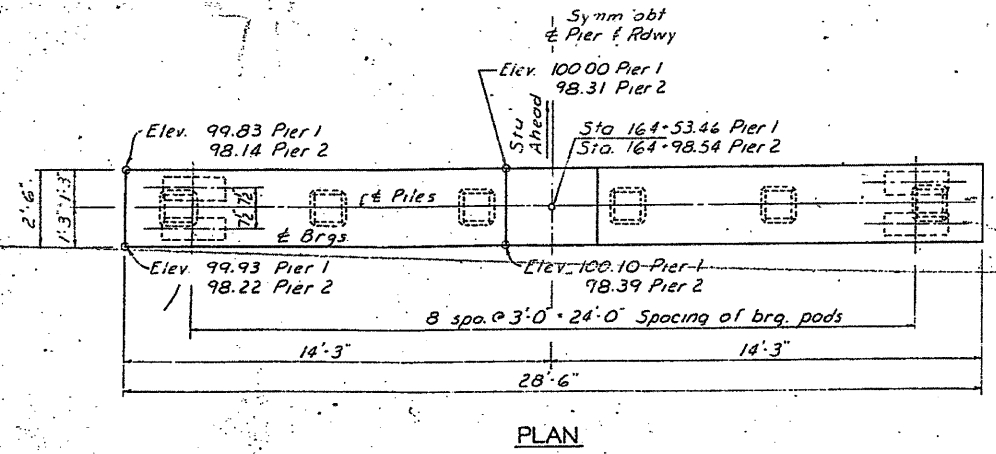


ELEVATION

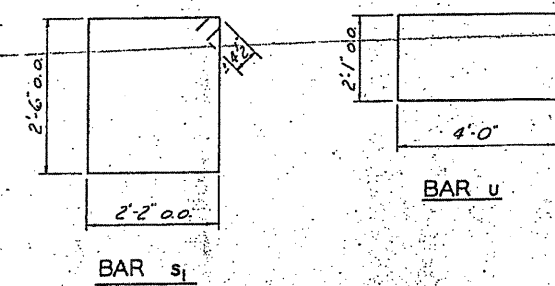


SECTION A-A

PILE DATA
 Type: Precast Concrete (14")
 No. Req'd (2 Piers): 12
 Min. Capacity: 39 Tons/Pile
 Est. Length: 35 Feet
 *Includes one test pile to be driven in Pier 1.
 Note: Minimum tip elevation of all piles in the piers shall be 63.0



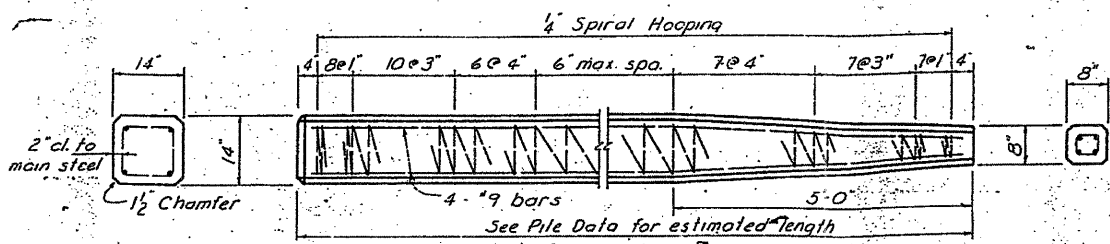
PLAN



BILL OF MATERIAL - 2 PIERS

BAR	NO.	SIZE	LENGTH	SHAPE
p	12	7"	28'-0"	—
s1	52	4"	10'-1"	□
u	16	6"	10'-1"	□
Class X Concrete		Cu. Yds.		15.4
Reinforcement Bars		Lbs.		1,280
Precast Concrete Piles		Lin. Ft.		385
Test Piles (Concrete)		Each		1

Note: For pile lengths up to 45' use two slings placed at a distance of 0.21L from each end. On piles longer than 45' use three slings placed 0.12L from each end and at the mid-point of the pile. L: Overall pile length.



DETAIL OF PRECAST CONCRETE PILES

PIERS
 BARNES BRIDGE
 SEC. 104B-TR SUGAR GROVE RD. DIST.
 KANE COUNTY
 STATION 164+76
 COLLINS AND RICE
 CONSULTING ENGINEERS
 M.J.R. REG. 10-6-64-307

FOR INFORMATION ONLY



DESIGNED - LM	REVISED -
CHECKED - GG	REVISED -
DRAWN - LM	REVISED -
CHECKED - DSB	REVISED -

STATE OF ILLINOIS
 DEPARTMENT OF TRANSPORTATION

EXISTING PLANS (4 OF 5)
 STRUCTURE NO. 045-3094

F.A.U. RTE.	SECTION	COUNTY	TOTAL SHEETS	SHEET NO.
3895	08-15104-01-BR	KANE	38	29
				CONTRACT NO. 63661

PLOT DATE = 1/2/2012
 FILE NAME = X:\P\113-2245-2008 Prairie Street.CAD\13-Sheets\Practice 16 - Existing Plans 14.dgn
 USER NAME = mercuri