

F.A.P. RTE.	SECTION	COUNTY	TOTAL SHEETS	SHEET NO.
0369	08-00162-03-BR	ILLINOIS	58	1
C.H. 33			CONTRACT NO. 63662	

FOR INDEX OF SHEETS, SEE SHEET NO. 2

HIGHWAY CLASSIFICATION
OTHER PRINCIPAL ARTERIAL

75TH STREET TRAFFIC DATA

2008 ADT = 31,800
2030 ADT = 44,000
POSTED SPEED LIMIT = 45 MPH
DESIGN SPEED = 50 MPH

STATE OF ILLINOIS
DEPARTMENT OF TRANSPORTATION
DIVISION OF HIGHWAYS

PROPOSED PLANS FOR FEDERAL AID HIGHWAY

FAP 0369 (C.H. 33 - 75TH STREET)
OVER EAST BRANCH DUPAGE RIVER
BRIDGE RECONSTRUCTION AND
ROADWAY REHABILITATION
SECTION #08-00162-03-BR

PROJECT #BRS-0043 (028)
DUPAGE COUNTY
C-91-260-12



75TH STREET OVER
EAST BRANCH DUPAGE RIVER
STA. 23 + 21.12, SN: 022-3012

R 10 E 3RD PM

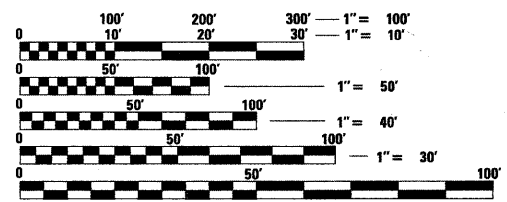


LISLE TOWNSHIP LOCATION MAP
SCALE
1" = 500'

GROSS LENGTH 75TH STREET = 2,269.45 FEET (0.43 MILES)
NET LENGTH 75TH STREET = 2,269.45 FEET (0.43 MILES)

PROJECT LOCATED IN
THE VILLAGE OF WOODRIDGE

PROJECT BEGINS
STATION 15 + 22.79



FULL SIZE PLANS HAVE BEEN PREPARED USING STANDARD
ENGINEERING SCALES. REDUCED SIZED PLANS WILL NOT
CONFORM TO STANDARD SCALES. IN MAKING MEASUREMENTS
ON REDUCED PLANS, THE ABOVE SCALES MAY BE USED.

J.U.L.I.E.
JOINT UTILITY LOCATION INFORMATION FOR EXCAVATION
1-800-892-0123 OR 811

CONTRACT NO. 63662

PATRICK ENGINEERING INC.
4970 VARSITY DRIVE
LISLE, IL 60532
patrickengineering.com



Daniel E. Sypien
DANIEL E. SYPIEN, P.E.
062-057639
EXP. DATE: 11/30/13
SHEETS: 1-14, 22, 23, 48-58



Adam D. James
ADAM D. JAMES, P.E.
062-054506
EXP. DATE: 11/30/13
SHEETS: 15-21

PROJECT ENDS
STATION 37 + 92.24

STATE OF ILLINOIS
DEPARTMENT OF TRANSPORTATION
DIVISION OF HIGHWAYS
APPROVED: December 12, 2011
Charles A. Popowski
DUPAGE CO., DIRECTOR OF TRANSPORTATION COUNTY ENGINEER

STATE OF ILLINOIS
DEPARTMENT OF TRANSPORTATION
DIVISION OF HIGHWAYS
PASSED January 5, 20 12
C. Holt
DISTRICT I ENGINEER OF LOCAL ROADS AND STREETS
RELEASING FOR BID BASED ON LIMITED REVIEW
JANUARY 6, 20 12
Devin M. O'Keefe
DEPUTY DIRECTOR OF HIGHWAYS, REGION I ENGINEER

**PRINTED BY THE AUTHORITY
OF THE STATE OF ILLINOIS**