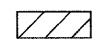



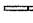
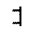
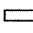
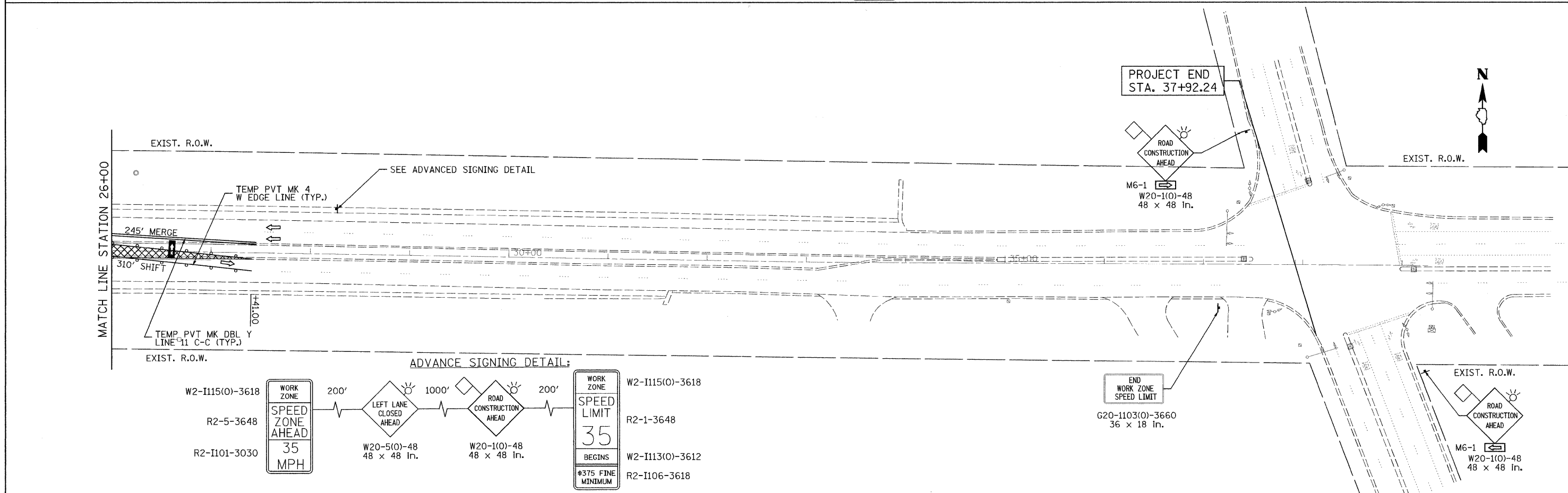
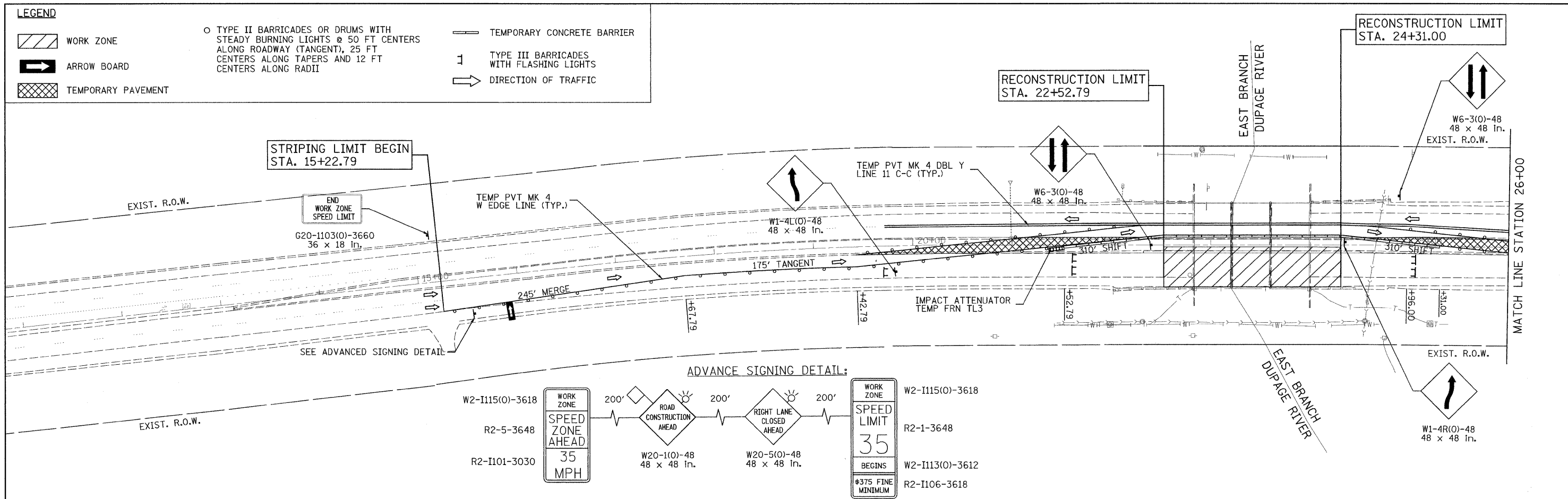



LEGEND

-  WORK ZONE
-  ARROW BOARD
-  TEMPORARY PAVEMENT
-  TYPE II BARRICADES OR DRUMS WITH STEADY BURNING LIGHTS @ 50 FT CENTERS ALONG ROADWAY (TANGENT), 25 FT CENTERS ALONG TAPERS AND 12 FT CENTERS ALONG RADII
-  TEMPORARY CONCRETE BARRIER
-  TYPE III BARRICADES WITH FLASHING LIGHTS
-  DIRECTION OF TRAFFIC



USER NAME = dsypien(Lisle) PLOT CONFIG = PDF(Grey_Large).plt PLOT SCALE = 1:50 PLOT DATE = 1/19/2012	DESIGNED - JAC DRAWN - JAC CHECKED - DES DATE - 12-19-2011	REVISED - REVISED - REVISED - REVISED -	 PATRICK ENGINEERING INC. 4970 VARSITY DRIVE LISLE, IL 60532 patrickengineering.com	DUPAGE COUNTY DIVISION OF TRANSPORTATION	SUGGESTED STAGES OF CONSTRUCTION & TRAFFIC CONTROL - STAGE 1 75TH STREET OVER EAST BRANCH DUPAGE RIVER	F&P RTE. 0369 SECTION 08-00162-03-BR COUNTY DUPAGE TOTAL SHEETS 58 SHEET NO. 13 FED. ROAD DIST. NO. ILLINOIS FED. AID PROJECT
---	---	--	--	---	---	--

G:\DPCDOT\21158.007\Drawings\RDW\Y\shs\W01\5_MOT_01.dgn