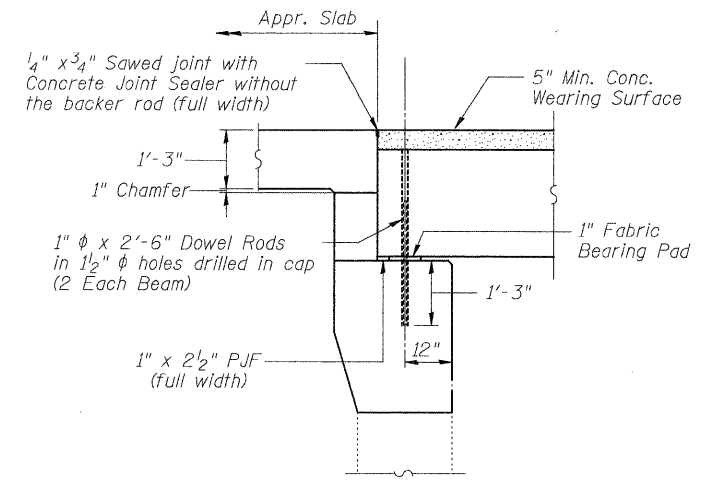


**SECTION B-B**

\* 1" joint shall be filled with non-shrink grout. Dimension may vary to accommodate tolerance in beam lengths



**SECTION A-A**

Notes:  
See Sheet S13 of S24 for Superstructure Details and Bill of Material.  
Bars indicated thus 15 x 5-#5 etc. indicates 15 lines of bars with 5 lengths per line.

**PLAN**  
(Showing Concrete Wearing Surface)

**MINIMUM BAR LAP**  
#4 bar=2'-1"  
#5 bar=2'-7"

PATRICK ENGINEERING INC.  
4670 VARSITY DRIVE  
LISLE, IL 60532  
patrickengineering.com

USER NAME =	DESIGNED - RDW	REVISED -
PLOT CONFIG	CHECKED - RLD	REVISED -
PLOT SCALE =	DRAWN - APD	REVISED -
PLOT DATE =	CHECKED - RLD	REVISED -

**DUPAGE COUNTY**  
**DIVISION OF TRANSPORTATION**

**SUPERSTRUCTURE PLAN**  
**75TH STREET OVER EAST BRANCH DUPAGE RIVER**

SHEET NO. S11 OF S24 SHEETS

FAP RTE.	SECTION	COUNTY	TOTAL SHEETS	SHEET NO.
0369	08-00162-03-BR	DUPAGE	58	34
CONTRACT NO. 63662				
ILLINOIS FED. AID PROJECT				