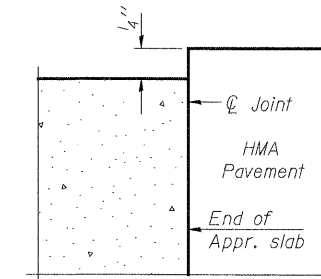


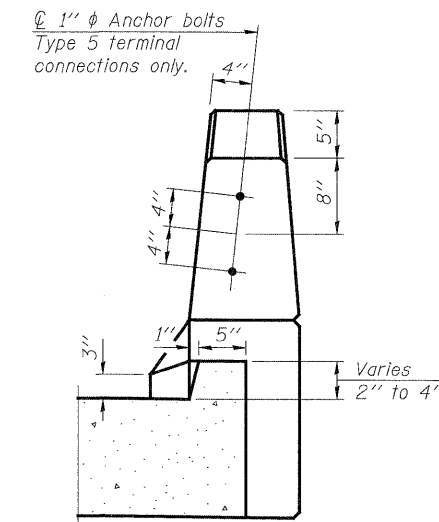
PLAN
 (East Abut. Approach Slab shown, West Abut. Approach Slab similar by opposite hand except as noted)

* Tilt #9 b3(E) bars as required to maintain clearance.
 ** Space between a4(E) or a6(E) bars, typ. at parapet.

Notes:
 See sheet S17 of S24 for Sections C-C & D-D and View E-E. a4(E) thru a9(E) bar spacings measured along \perp Rdwy.



**FLEXIBLE PAVEMENT
 DETAIL A**



VIEW B-B

BA-0

7-1-10

PATRICK ENGINEERING INC.
 4870 VARSITY DRIVE
 LISLE, IL 60532
 patrickengineering.com

USER NAME =	DESIGNED - RDW	REVISED -
PLDT CONFIG	CHECKED - RLD	REVISED -
PLDT SCALE =	DRAWN - APD	REVISED -
PLDT DATE =	CHECKED - RLD	REVISED -

**DUPAGE COUNTY
 DIVISION OF TRANSPORTATION**

**APPROACH SLAB DETAILS I
 75TH STREET OVER EAST BRANCH DUPAGE RIVER**

SHEET NO. S16 OF S24 SHEETS

FAP RTE.	SECTION	COUNTY	TOTAL SHEETS	SHEET NO.
0369	08-00162-03-BR	DUPAGE	58	39
				CONTRACT NO. 63662
ILLINOIS FED. AID PROJECT				