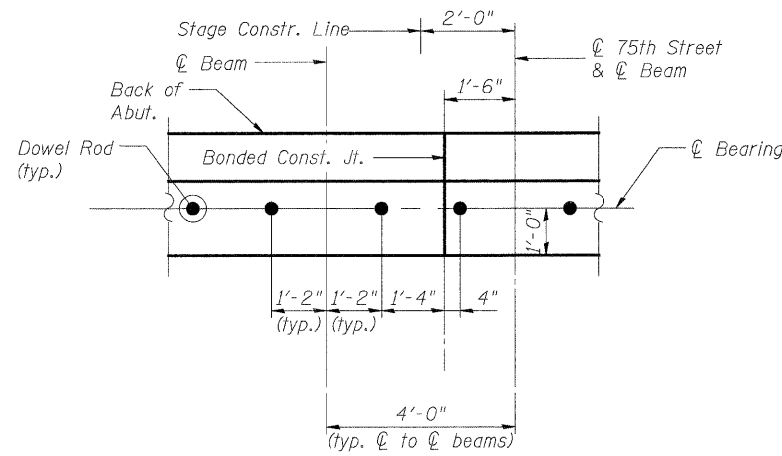
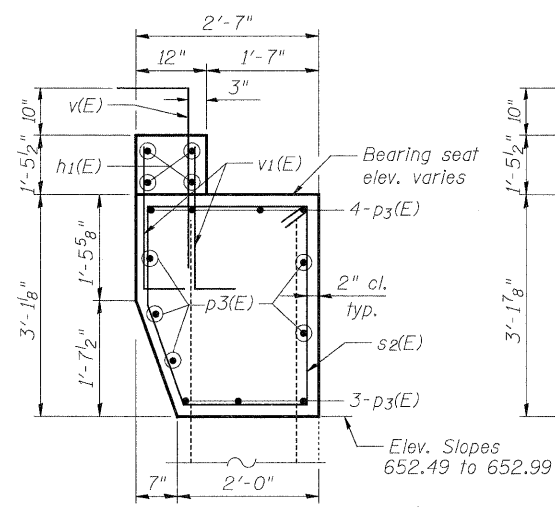


**PLAN**

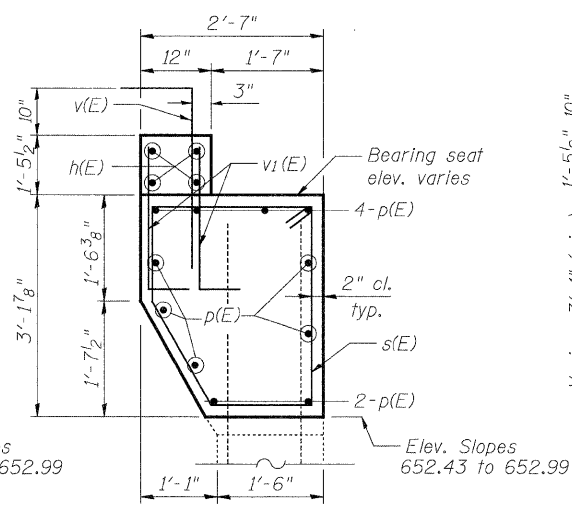
(West Abutment shown. East Abutment is mirror image)



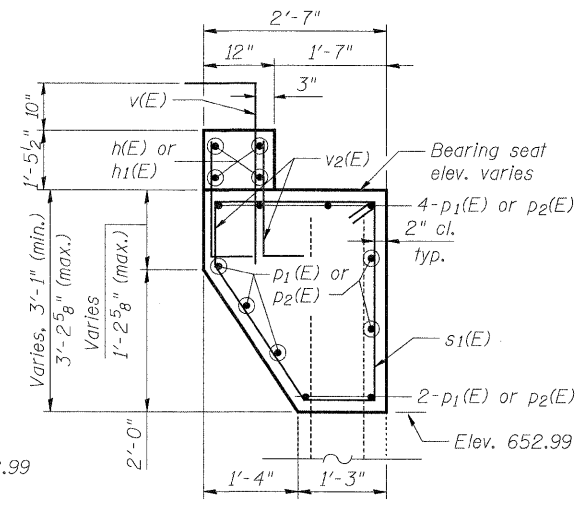
**DETAIL "D"**



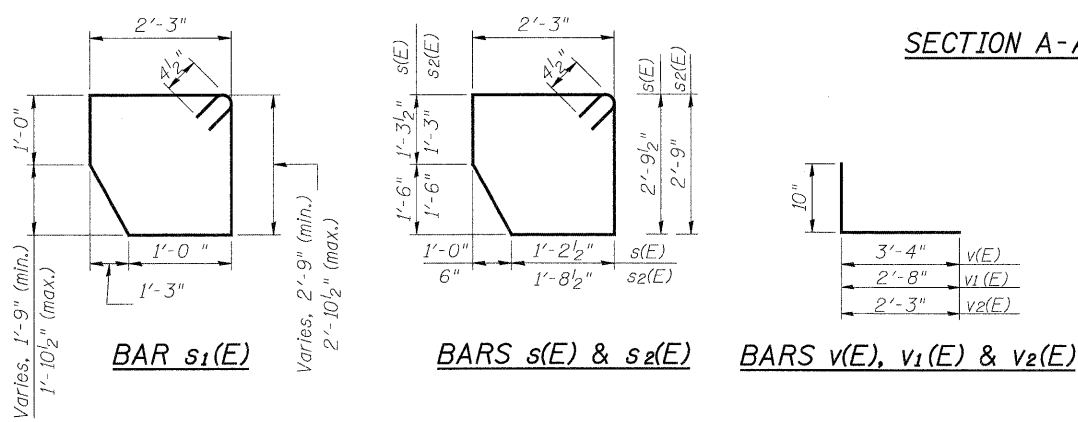
**SECTION A-A**



**SECTION B-B**



**SECTION C-C**



**ABUTMENT  
BILL OF MATERIAL**

(2 Abutments)

Bar	No.	Size	Length	Shape
h(E)	8	#5	40'-8"	—
h1(E)	8	#5	43'-5"	—
p(E)	22	#5	36'-2"	—
p1(E)	22	#5	7'-9"	—
p2(E)	22	#5	14'-9"	—
p3(E)	24	#5	31'-11"	—
s(E)	74	#4	10'-1"	⌋
s1(E)	32	#4	10'-0"	⌋
s2(E)	66	#4	10'-3"	⌋
v(E)	172	#5	4'-2"	⌋
v1(E)	280	#4	3'-6"	⌋
v2(E)	64	#4	3'-1"	⌋
Structure Excavation		Cu. Yd.	115	
Concrete Structures		Cu. Yd.	54.9	
Reinforcement Bars, Epoxy Coated		Pound	5560	
Structural Repair of Concrete (Depth Equal to or Less Than 5")		Sq. Ft.	34	
Bar Splicers		Each	30	
Epoxy Crack Injection		Foot	4	

Notes:  
 End of new deck beams shall be aligned at the abutment. Any variation in length of deck beams shall be placed at the pier.  
 Cast backwall after new deck beams have been erected and concrete wearing surface has been poured.  
 Backfill required for the stage being constructed shall be placed behind the abutment after the new deck beams have been set, the backwall has been poured and the formwork removed. See Article 502.10 of the Standard Specifications.  
 For details of Bar Splicers, see sheet S22 of S24.  
 For drainage details, see sheet S2 of S24.  
 For bearing pad details, see sheet S15 of S24.