

F.A.P. RTE.	SECTION	COUNTY	TOTAL SHEETS	SHEET NO.
0541	10-F3000-00-BT	LAKE	91	1
FED. ROAD DIST. NO. 1		ILLINOIS	CONTRACT NO. 63665	



STATE OF ILLINOIS
DEPARTMENT OF TRANSPORTATION
DIVISION OF HIGHWAYS
**PLANS FOR PROPOSED
FEDERAL AID HIGHWAY**

**FAP ROUTE 0541 (GRAND AVENUE, ILLINOIS ROUTE 132)
MILLENNIUM TRAIL UNDERPASS
SECTION 10-F3000-00-BT
PROJECT NO. TE-00D1 (842)
LAKE COUNTY FOREST PRESERVE DISTRICT
LAKE COUNTY
C-91-345-11**

INDEX OF SHEETS

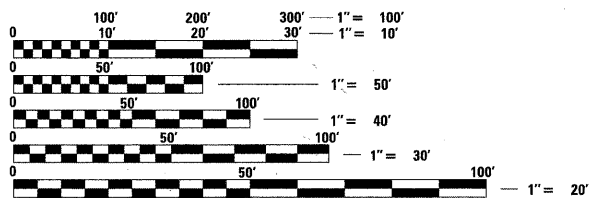
- 1 COVER SHEET
- 2 GENERAL NOTES
- 3-4 SUMMARY OF QUANTITIES
- 5 TYPICAL SECTIONS
- 6-8 SCHEDULE OF QUANTITIES
- 9 ALIGNMENTS, TIES, AND BENCHMARKS
- 10 ROADWAY PLAN & PROFILE - GRAND AVENUE
- 11-12 PLAN & PROFILE - MILLENNIUM TRAIL
- 13-16 STAGES OF CONSTRUCTION
- 17 GRADING AND PLANTING PLAN
- 18-21 LANDSCAPING AND EROSION CONTROL
- 22 SIGNING AND PAVEMENT MARKING
- 23-25 LIGHTING PLANS AND DETAILS
- 26-47 STRUCTURAL DRAWINGS
- 48-49 CONSTRUCTION DETAILS
- 50 TC-11, TYPICAL APPLICATIONS RAISED REFLECTIVE PAVEMENT MARKERS (SNOW PLOW RESISTANT)
- 51 TC-13, DISTRICT ONE TYPICAL PAVEMENT MARKINGS
- 52 TC-18, SIGNING FOR FLAGGING OPERATIONS AT WORK ZONE OPENINGS
- 53 TC-22, ARTERIAL ROAD INFORMATION SIGN
- 54 TC-26, DRIVEWAY ENTRANCE SIGNING
- 55-63 CROSS SECTIONS - GRAND AVENUE STAGE 1
- 64-73 CROSS SECTIONS - GRAND AVENUE STAGE 2
- 74-88 CROSS SECTIONS - MILLENNIUM TRAIL
- 89-91 CROSS SECTIONS - BERM

HIGHWAY STANDARDS

- 000001 -06 STANDARD SYMBOLS, ABBREVIATIONS AND PATTERNS
- 001001 -02 AREAS OF REINFORCEMENT BARS
- 280001 -06 TEMPORARY EROSION CONTROL SYSTEMS
- 515001 -03 NAME PLATE FOR BRIDGES
- 542201 -02 REINFORCED CONCRETE END SECTIONS FOR PIPE CULVERTS 15" THRU 36" DIA. SKEWED WITH ROADWAY
- 542301 -03 PRECAST REINFORCED CONCRETE FLARED END SECTION
- 542546 -01 FLUSH INLET BOX FOR MEDIAN
- 542601 -03 REINFORCED CONCRETE PIPE ELBOW 24", 30" OR 36"
- 701301 -04 LANE CLOSURE 2L2W-SHORT TIME OPERATION
- 701306 -03 LANE CLOSURE 2L2W-SLOW MOVE OPERATIONS, DAY ONLY 45 MPH
- 701326 -04 LANE CLOSURE 2L2W PAVEMENT WIDENING 45 MPH
- 701422 -04 LANE CLOSURE MULTI LANE 45-55MPH
- 701501 -06 URBAN LANE CLOSURE 2L 2W UNDIVIDED
- 701901 -02 TRAFFIC CONTROL DEVICES
- 780001 -03 TYPICAL PAVEMENT MARKINGS
- 781001 -03 TYPICAL APPLICATIONS RAISED REFLECTIVE PAVEMENT MARKERS

LCDOT HIGHWAY STANDARDS

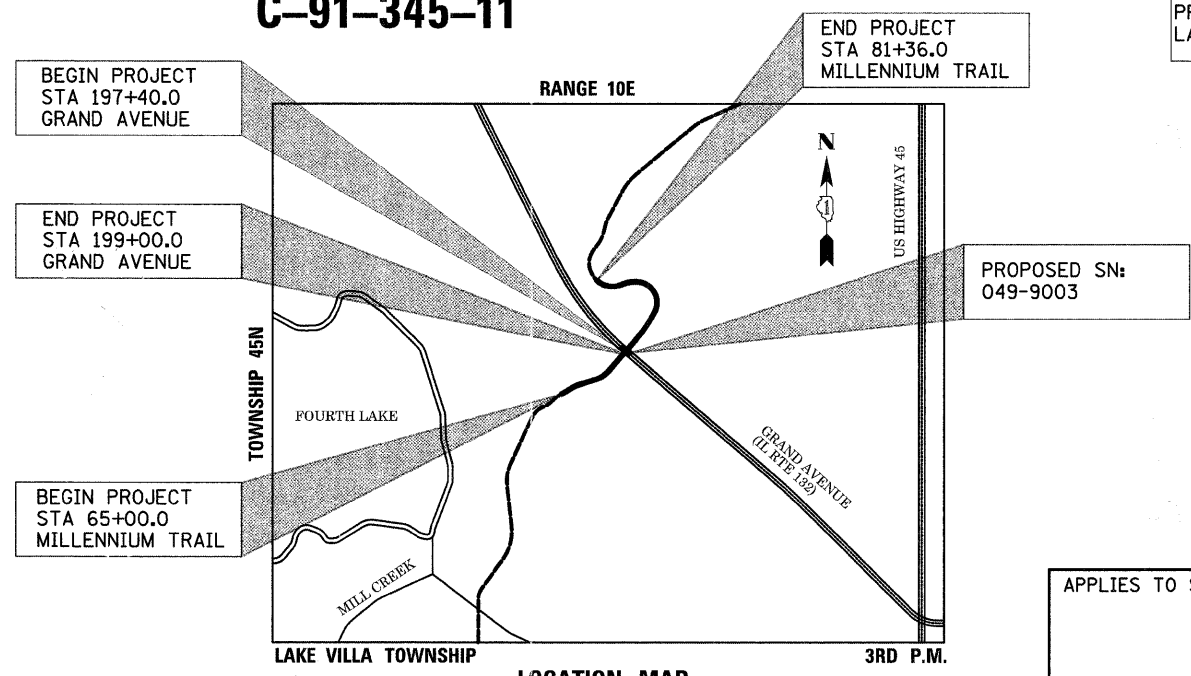
- LC 2050 TRIANGULAR SILT DIKE INSTALLATION FOR ROADWAY DITCH OR DRAINAGE DITCH
- LC 2051 PERIMETER EROSION BARRIER INSTALLATION
- LC 4202 CONCRETE WASHOUT FACILITIES



FULL SIZE PLANS HAVE BEEN PREPARED USING STANDARD ENGINEERING SCALES. REDUCED SIZED PLANS WILL NOT CONFORM TO STANDARD SCALES. IN MAKING MEASUREMENTS ON REDUCED PLANS, THE ABOVE SCALES MAY BE USED.

J.U.L.I.E.
JOINT UTILITY LOCATION INFORMATION FOR EXCAVATION
1-800-892-0123
OR 811

with the following
COUNTY: LAKE
CITY-TOWNSHIP: LINDENHURST - LAKE VILLA
SEC. & 1/4 SEC. NO. 12 SE 1/4 OF THE NW 1/4
48 HOURS BEFORE YOU DIG
EXCLUDING SAT., SUN, & HOLIDAYS



PROJECT LENGTH:

GRAND AVENUE GROSS & NET LENGTH - 160.0 FT (0.030 MILE)
MILLENNIUM TRAIL GROSS & NET LENGTH - 1,636.0 FT (0.310 MILE)
TOTAL GROSS & NET LENGTH - 1,796.0 FT (0.340 MILE)

GRAND AVENUE DESIGN INFORMATION:

DESIGN DESIGNATION = OTHER PRINCIPAL ARTERIAL
POSTED SPEED = 45 MPH
2009 ADT = 14,100 VPD

PROJECT LOCATED IN
LAKE VILLA TOWNSHIP

APPLIES TO SHEETS 1-25, 48-91

APPROVED: *Reid T. Magner*
REGISTERED P.E., STATE OF ILLINOIS EXPIRES 11/30/2013
APPLIES TO SHEETS 26-47

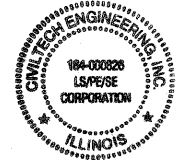
APPROVED: *Gregory J. Hatlestad*
REGISTERED S.E., STATE OF ILLINOIS EXPIRES 11/30/2012

**STATE OF ILLINOIS
DEPARTMENT OF TRANSPORTATION
DIVISION OF HIGHWAYS**

Approved: *[Signature]* 12/14/11
Lake County Forest Preserve District

Passed: *[Signature]* 1-4-12
District one Engineer of Local Roads & Streets

Releasing for Bid Based on Limited Review: *[Signature]* JANUARY 4, 2012
Deputy Director of Highways, Region one Engineer



PLANS PREPARED BY:
CIVILTECH
450 E. Devon Ave, Suite 300 - Itasca, Illinois 60143
Tel: 630.773.3900 - Fax: 630.773.3975
www.civiltechinc.com

CONTRACT NO. 63665

PRINTED BY THE AUTHORITY OF THE STATE OF ILLINOIS

PROGRAM AND OFFICE ENGINEER: CHARLES F. RIDDLE, P.E. 847-705-4406 SCHAUMBURG, IL
CONSULTANT ENGINEER: REID T. MAGNER, P.E. CIVILTECH ENGINEERING, INC.