

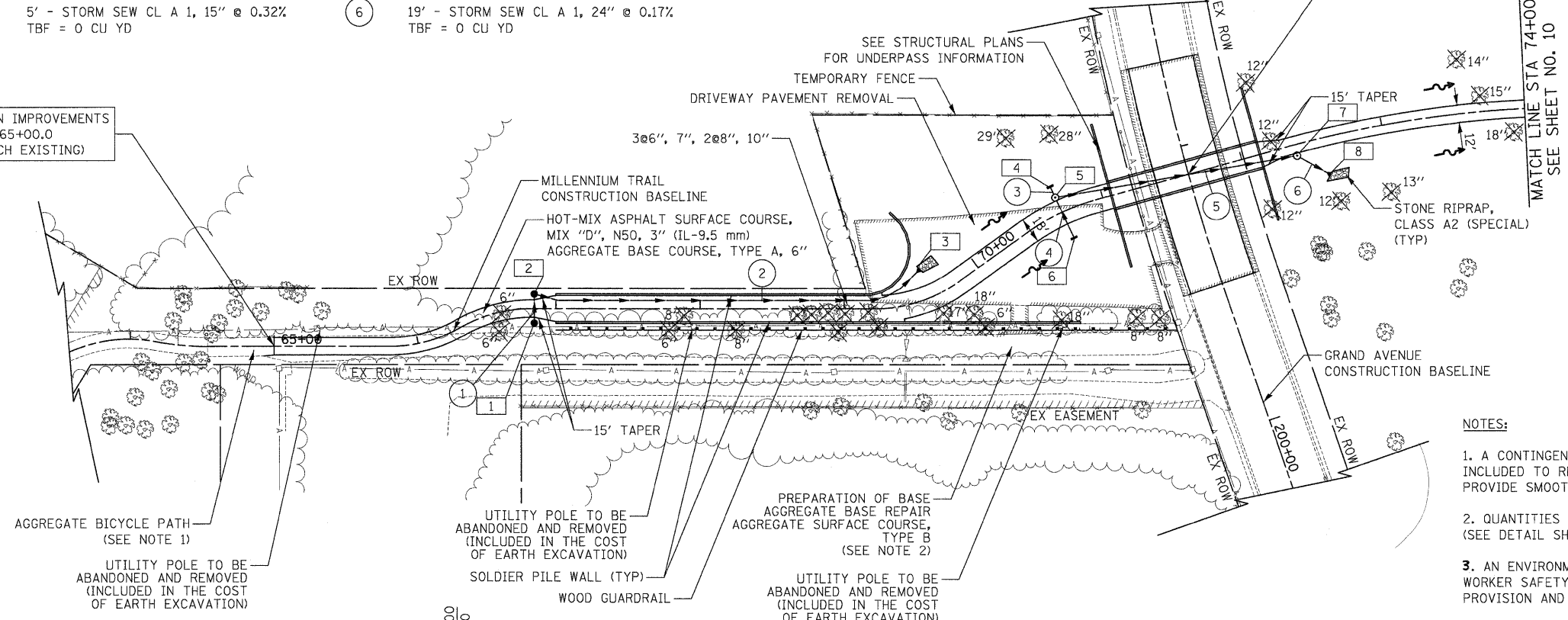
- ① 17' - STORM SEW CL A 1, 12" @ 1.35%
TBF = 4 CU YD
- ② 274' - STORM SEW CL B 1, 8" @ 4.19%
TBF = 35 CU YD
- ③ 5' - STORM SEW CL A 1, 15" @ 0.32%
TBF = 0 CU YD
- ④ 27' - STORM SEW CL A 1, 15" @ 0.32%
TBF = 4 CU YD
- ⑤ 166' - STORM SEW CL A 1, 24" @ 0.57%
TBF = 40 CU YD
- ⑥ 19' - STORM SEW CL A 1, 24" @ 0.17%
TBF = 0 CU YD

- LEGEND:
- PERMANENT DITCH
 - OVERLAND FLOW
 - REMOVAL
 - TREE REMOVAL AND DIAMETER

DATE	
BY	
FINAL SURVEY	
NOTED	
NO. CHECKED	

DATE	
BY	
ORIGINAL SURVEY	
NOTED	
NO. CHECKED	

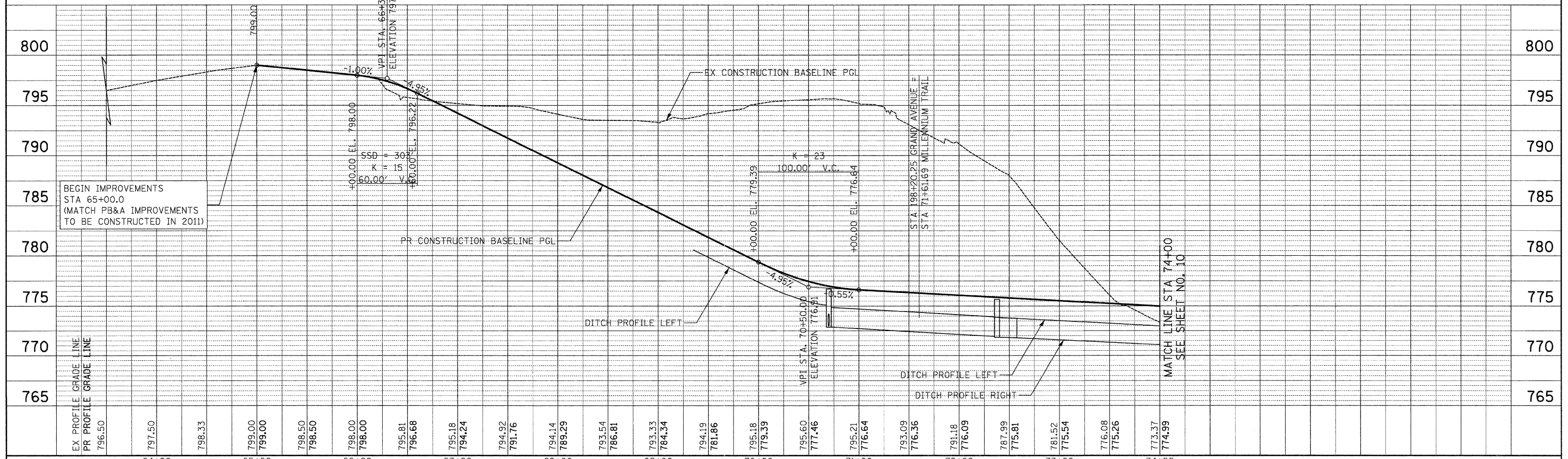
BEGIN IMPROVEMENTS
STA 65+00.0
(MATCH EXISTING)



- ① STA 66+85.00, 10.00' RT
CB TC T8G
RIM 793.88
INV 791.40 (NW)
- ② STA 66+85.00, 10.00' LT
CB TA 4 DIA T8G
RIM 793.88
INV 791.17 (SE)
INV 791.07 (NE)
- ③ STA 69+61.75, 20.87' LT
MET END SEC 8
INV 779.50 (SW)
- ④ STA 70+70.00, 19.68' LT
FL INLT BX MED 542546
RIM 775.10
INV 773.00 (SE)
- ⑤ STA 70+70.00, 11.28' LT
MAN TA 5D T1F CL SPL
RIM 776.72
INV 772.98 (NW)
INV 772.98 (SE)
INV 772.88 (NE)
- ⑥ STA 70+70.00, 19.68' RT
FL INLT BX MED 542546
RIM 775.17
INV 773.07 (NW)
- ⑦ STA 72+37.83, 7.75' RT
MAN TA 5D T1F CL SPL
RIM 775.67
INV 771.93 (SW)
INV 771.83 (E)
- ⑧ STA 72+57.59, 26.28' RT
PRC FLAR END SEC 24
GRATING-C FL END S 24"
INV 771.80 (W)

- NOTES:
- A CONTINGENCY QUANTITY OF AGGREGATE BICYCLE PATH HAS BEEN INCLUDED TO RECONSTRUCT AND RESHAPE THE TRAIL CONNECTION POINT TO PROVIDE SMOOTH TRANSITION TO THE HOT-MIX ASPHALT PATH.
 - QUANTITIES PROVIDED TO RESHAPE THE EXISTING AGGREGATE ENTRANCE (SEE DETAIL SHEET FOR A SECTION).
 - AN ENVIRONMENTAL FIRM IS REQUIRED TO CONTINUOUSLY MONITOR FOR WORKER SAFETY AND SOIL CONTAMINATION AT SEVERAL AREAS. SEE SPECIAL PROVISION AND SUPPLEMENTAL SPECIFICATIONS FOR DETAILS.

MILLENNIUM TRAIL



USER NAME = pk	DESIGNED - PK	REVISED -	STATE OF ILLINOIS DEPARTMENT OF TRANSPORTATION	VERT. 0 HORIZ. 0	SCALES 10 50 100	MILLENNIUM TRAIL - PLAN & PROFILE GRAND AVENUE UNDERPASS	F.A.P. RTE. 0541	SECTION 10-F3000-00-BT	COUNTY LAKE	TOTAL SHEETS 91	SHEET NO. 11
FILE NAME ... 2322_PP_02_Bikepath.dgn	DRAWN - PK	REVISED -					CONTRACT NO. 63665				
PLOT SCALE 58.0000' / in.	CHECKED - RTM	REVISED -					FED. ROAD DIST. NO. 1 ILLINOIS FED. AID PROJECT				
PLOT DATE = 12/14/2011	DATE = 12/19/2011	REVISED -	SHEET NO. 1 OF 2 SHEETS		STA. 65+80 TO STA. 74+00						