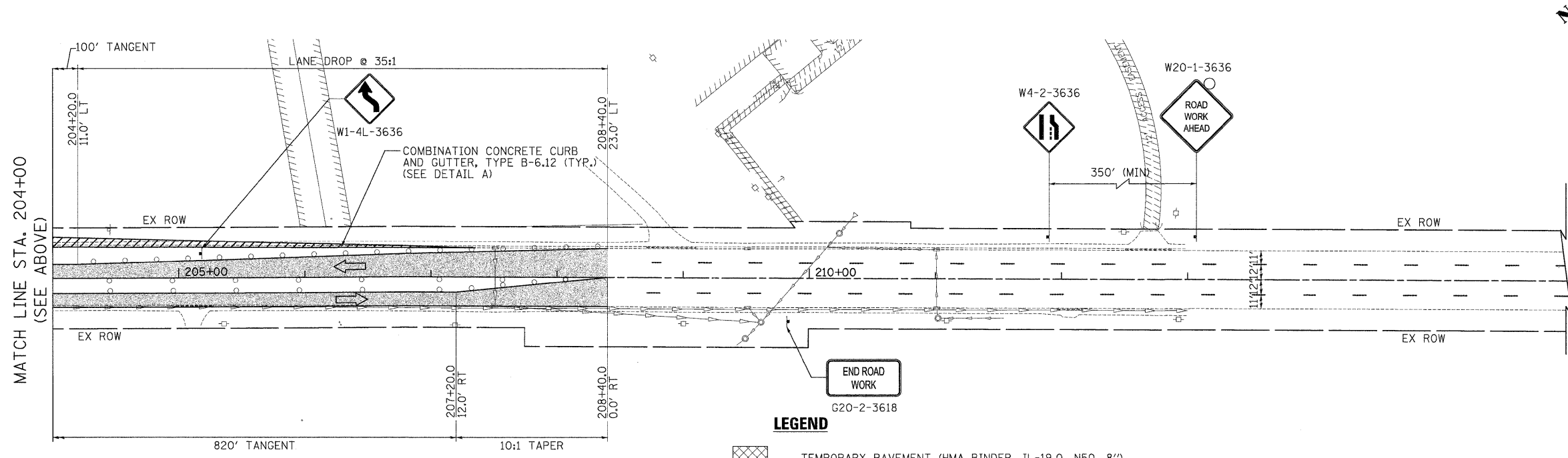
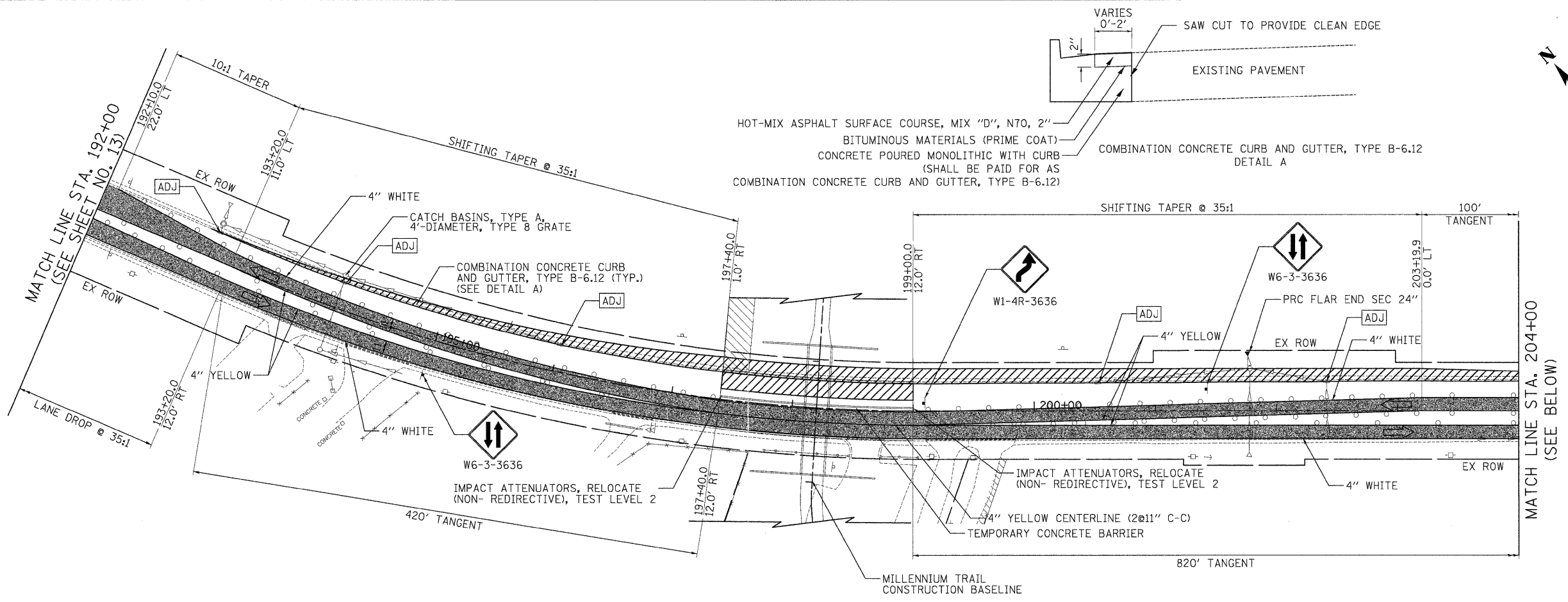


DATE	
BY	
SURVEYED	
PLOTTED	
TEMPLATE	
NOTE BOOK	
AREAS CHECKED	
NO.	

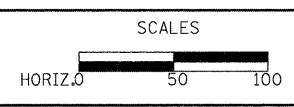
DATE	
BY	
SURVEYED	
PLOTTED	
TEMPLATE	
NOTE BOOK	
AREAS CHECKED	
NO.	



- LEGEND**
- TEMPORARY PAVEMENT (HMA BINDER, IL-19.0, N50, 8")
 - LIMIT OF WORKZONE FOR THIS STAGE
 - SUGGESTED CONSTRUCTION ENTRANCE
 - TYPE II BARRICADES WITH MONO-DIRECTIONAL STEADY-BURN LIGHTS @ 50' CNTRS (25' AT BEGINNING OF TAPER)
 - VERTICAL PANELS WITH MONO-DIRECTIONAL STEADY-BURN LIGHTS @ 50' CNTRS (25' AT BEGINNING OF TAPER)
 - DIRECTION OF TRAFFIC
 - TEMPORARY TRAFFIC SIGN
 - STRUCTURES TO BE ADJUSTED
 - STRUCTURES TO BE REMOVED

USER NAME = pk	DESIGNED - PK	REVISED -
FILE NAME ...07-M01\2322.SOC.05.SOC2-2.dgn	DRAWN - PK	REVISED -
PLOT SCALE 50.0000 1/ in.	CHECKED - RTM	REVISED -
PLOT DATE = 12/14/2011	DATE - 12/19/2011	REVISED -

**STATE OF ILLINOIS
DEPARTMENT OF TRANSPORTATION**



**STAGES OF CONSTRUCTION - STAGE 2
GRAND AVENUE UNDERPASS**

F.A.P. RTE.	SECTION	COUNTY	TOTAL SHEETS	SHEET NO.
0541	10-F3000-00-BT	LAKE	91	16
SHEET NO. 4 OF 4 SHEETS STA. 192+00 TO STA. 208+40			CONTRACT NO. 63665	
FED. ROAD DIST. NO. 1 ILLINOIS FED. AID PROJECT				