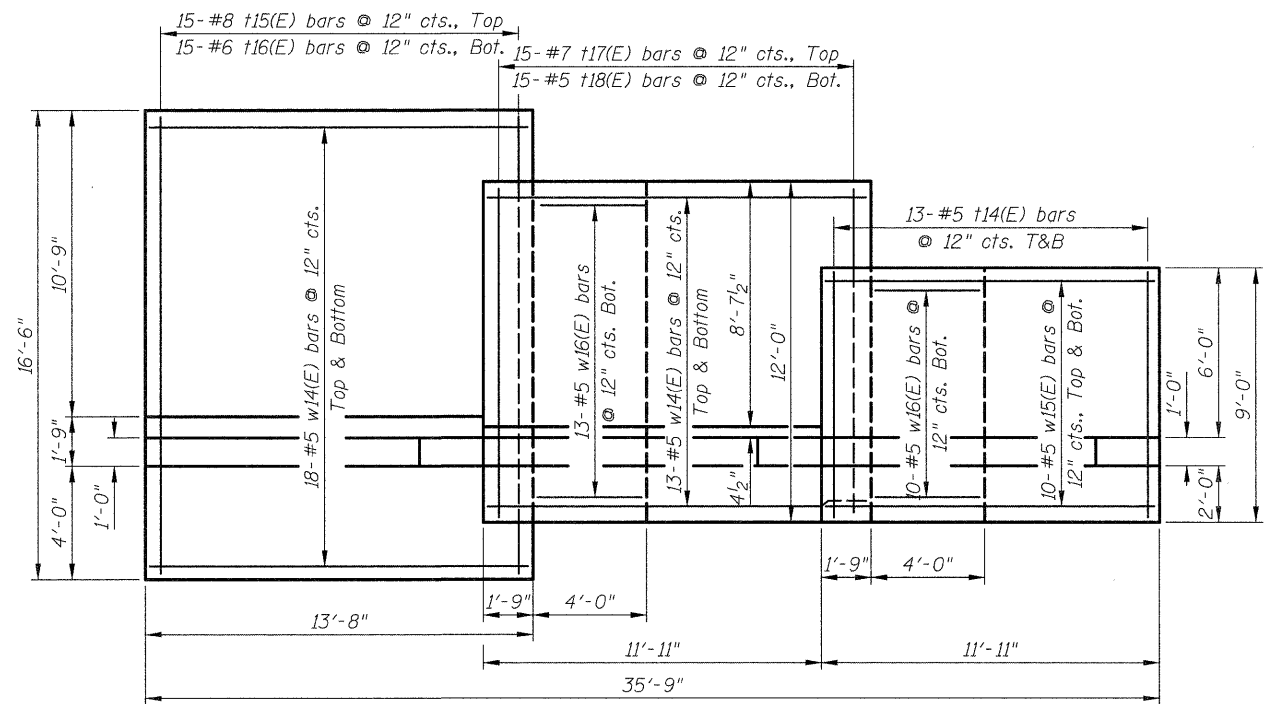
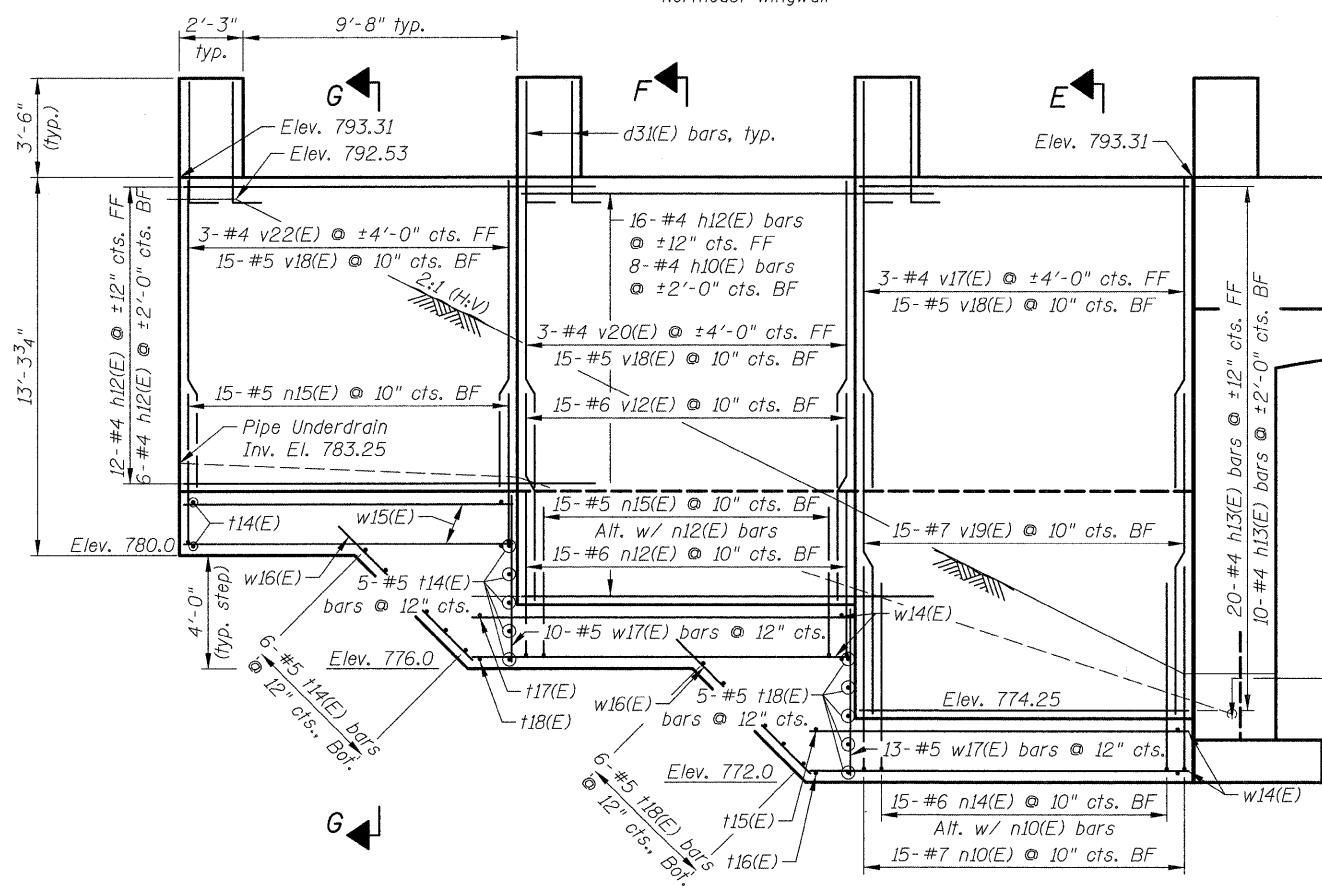


**PLAN**  
Northeast Wingwall

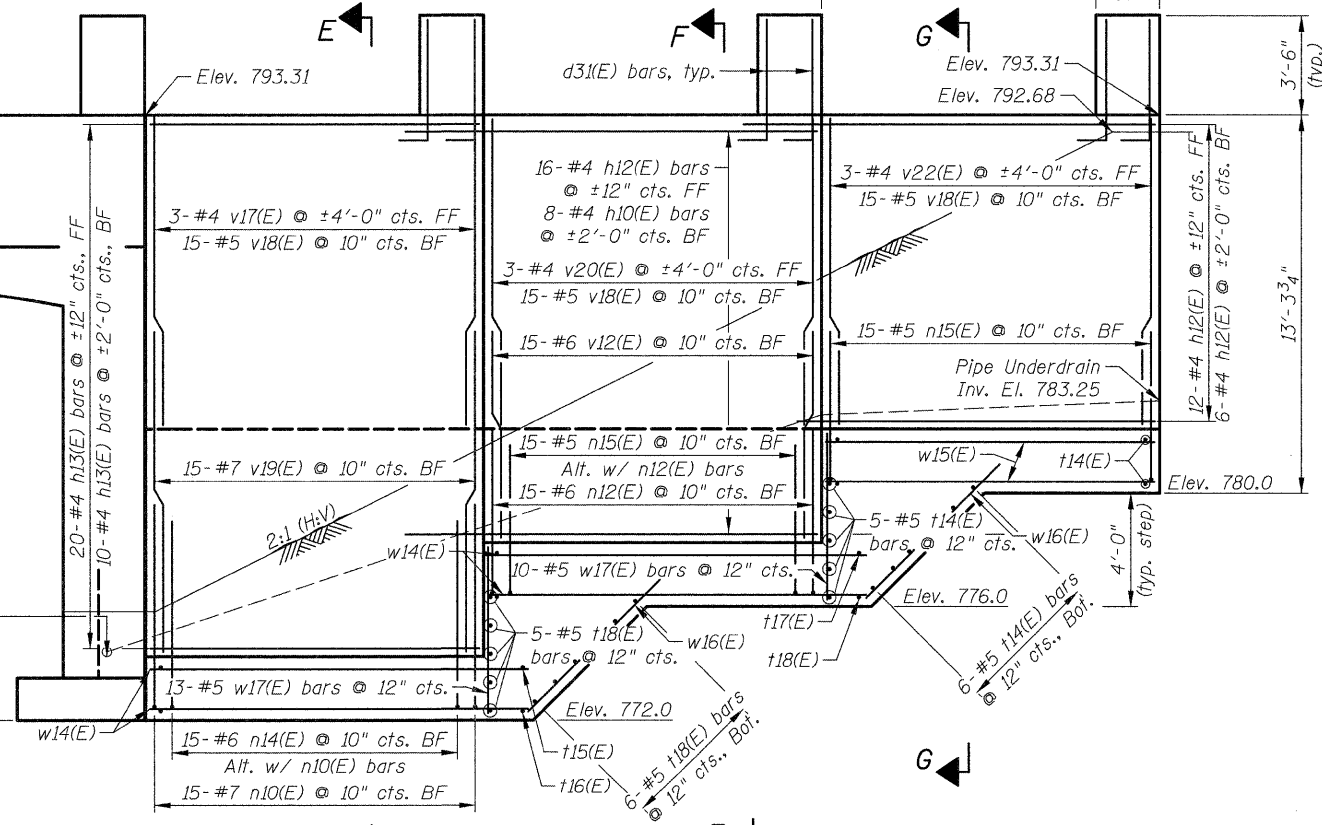


**PLAN**  
Northwest Wingwall



**ELEVATION**  
Northeast Wingwall

**ENTRANCE ELEVATION**  
North Entrance



**ELEVATION**  
Northwest Wingwall

**MINIMUM BAR LAP**

| Bar Size | Class C |
|----------|---------|
| #4       | 2'-7"   |
| #5       | 3'-3"   |
| #6       | 3'-10"  |
| #7       | 5'-2"   |
| #8       | 6'-9"   |
| #9       | 8'-7"   |

- Notes:  
 1. See Sheet S7 for Bill of Material, and Sections E-E, F-F, and G-G.  
 2. See Sheet S8 for pilaster details and Bill of Material.

4/02/05 PM J:\2322\cad\struct\undrpass\06.north.wingwall.dfls.rev.dgn  
 1/26/2002

**CIVILTECH**  
 450 E Devon Ave, Suite 300  
 Itasca, Illinois 60143  
 Tel: 630.773.3900 Fax: 630.773.3975  
 www.civiltechinc.com

|          |                    |         |   |
|----------|--------------------|---------|---|
| DRAWN    | - K. BOCHNOWSKI    | REVISED | - |
| DESIGNED | - M. LANGE         | REVISED | - |
| CHECKED  | - G. HATLESTAD     | REVISED | - |
| DATE     | - JANUARY 27, 2012 | REVISED | - |

**STATE OF ILLINOIS**  
**DEPARTMENT OF TRANSPORTATION**

**NORTH WINGWALLS**  
**GRAND AVENUE OVER MILLENNIUM TRAIL**  
**STRUCTURE NO. 049-9003**

SHEET NO. S6 OF S11 SHEETS

| F.A.P. RTE.               | SECTION        | COUNTY | TOTAL SHEETS | SHEET NO.           |
|---------------------------|----------------|--------|--------------|---------------------|
| 0541                      | 10-F3000-00-BT | LAKE   | 91           | 31                  |
|                           |                |        |              | <b>CONTRACT NO.</b> |
| ILLINOIS FED. AID PROJECT |                |        |              |                     |