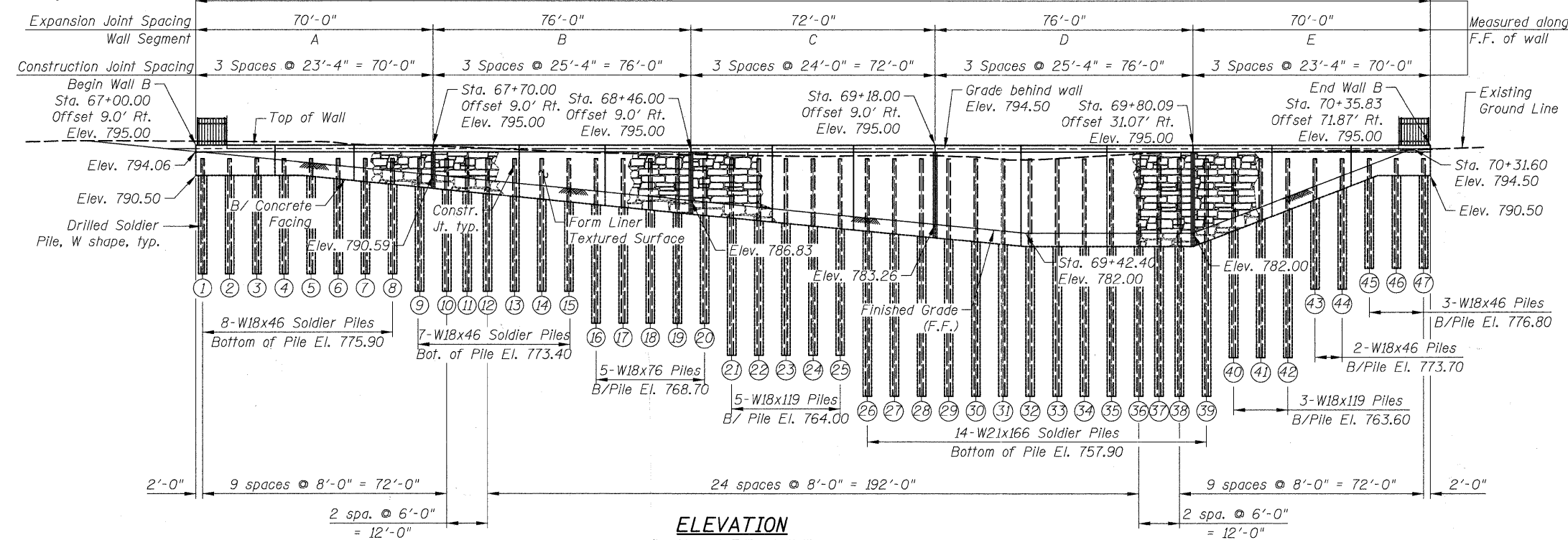


Benchmark: Cut square "□" in concrete at the southwest corner of parapet wall on the south side of Rollins Road across from 19714 Rollins Road. Elevation = 769.52 (NGVD 1929)

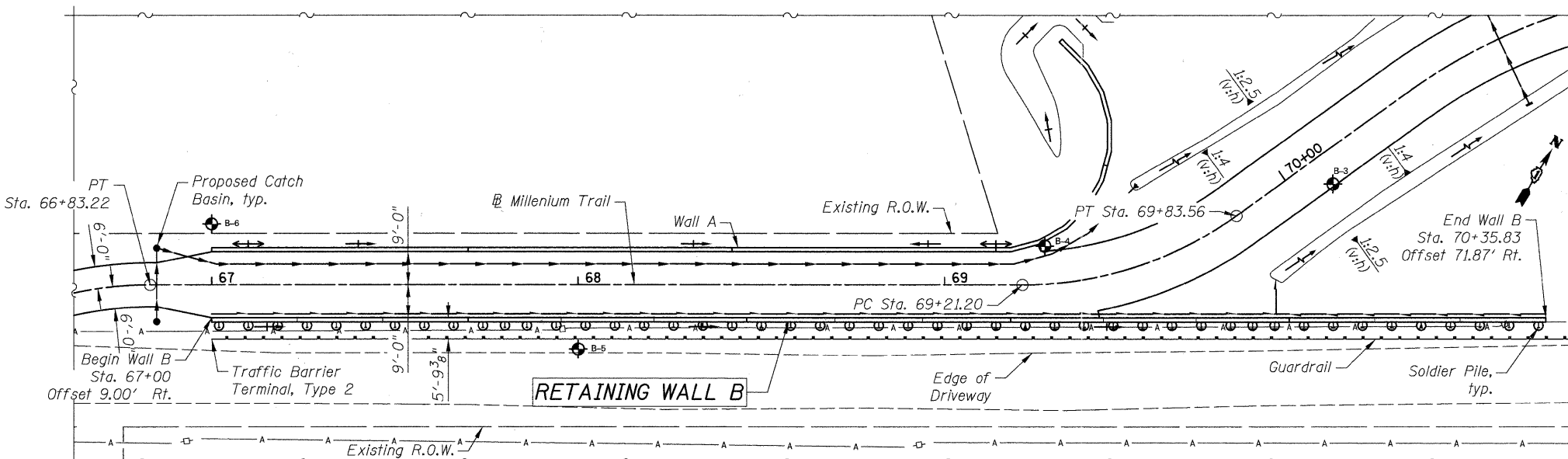
Existing Structure: None

364'-0" End to end retaining wall limits



ELEVATION

(Looking at F.F. of Wall)
(Unfolded Elevation)



PLAN

**CURVE DATA
MILLENNIUM TRAIL**

PI STA. = 69+53.43
 $\Delta = 35^\circ 43' 51''$ (LT)
 $D = 57^\circ 17' 45''$
 $R = 100.00'$
 $T = 32.23'$
 $L = 62.36'$
 $E = 5.07'$
P.C. STA = 69+21.20
P.T. STA = 69+83.56

LEGEND

- ⊕ Soil Borings
- Proposed Storm Sewer
- Proposed Pipe Underdrain

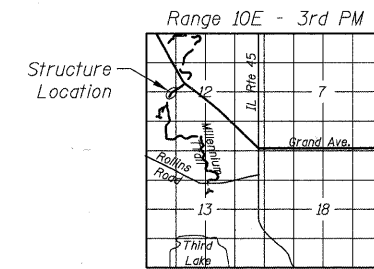
Notes:
Offsets are measured from @ Millennium Trail to the front face of the wall.
F.F. - Front Face
B.F. - Back Face

DESIGN SPECIFICATIONS

2002 AASHTO Standard Spec. for Highway Bridges

DESIGN STRESSES

FIELD UNITS
 $f'_c = 3,500$ psi
 $f_y = 60,000$ psi (Reinforcement)
 $f_y = 36,000$ psi (M270 Gr. 36 Soldier Piles)

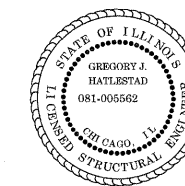


LOCATION SKETCH

INDEX OF SHEETS

- WB1 General Plan & Elevation
- WB2 Wall B Elevations I
- WB3 Wall B Elevations II
- WB4 Wall B Details
- WB5 Wall B Soil Boring Logs

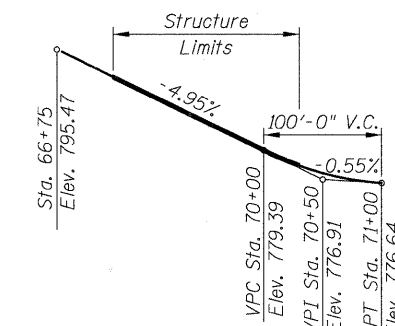
CIVILTECH ENGINEERING, INC.
GREGORY J. HATLESTAD, S.E.



GREGORY J. HATLESTAD, S.E.
081-005562

EXP 11/30/2012

DATE 12/15/2011



PROPOSED PROFILE GRADE

MILLENNIUM TRAIL

(Along @ Millennium Trail)

I certify that to the best of my knowledge, information, and belief, this bridge design is structurally adequate for the design loading shown on the plans. The design is an economical one for the style of the structure and complies with requirements of the current AASHTO Standard Specifications for Highway Bridges.

GENERAL NOTES

1. Reinforcement bars designated (E) shall be epoxy coated.
2. Reinforcement bars shall conform to the requirements of ASTM A 706 Gr. 60.

TOTAL BILL OF MATERIALS

ITEM	UNIT	TOTAL QUANTITY
Structure Excavation	Cu. Yd.	377
Concrete Structures	Cu. Yd.	148.6
Stud Shear Connectors	Each	431
Reinforcement Bars, Epoxy Coated	Pound	8,910
Geocomposite Wall Drain	Sq. Yd.	219
Drilling and Setting Soldier Piles (In Soil)	Cu. Ft.	4,136
* Untreated Timber Lagging	Sq. Ft.	2,696
* Furnishing Soldier Piles (W Section)	Foot	1,208
* Pipe Underdrains for Structures 4"	Foot	380
* Ornamental Fence	Foot	363
* Staining Concrete Structures	Sq. Yd.	342
* Form Liner Textured Surface, Special	Sq. Ft.	3,070

* Indicates Special Provision

**GENERAL PLAN & ELEVATION
WALL B; MILLENNIUM TRAIL
SEC. 10-F3000-00-BT
LAKE COUNTY**

STA. 67+00.00 TO STA. 70+35.83