

PROGRAM AND OFFICE ENGINEER: CHARLES F. RIDDLE, P.E. 847-705-4406 SCHAUMBURG, IL

FOR INDEX OF SHEETS, SEE SHEET NO. 2
 FOR INDEX OF HIGHWAY STANDARDS, SEE SHEET NO. 2
 PROJECT LOCATED IN RICHMOND TOWNSHIP.

STATE OF ILLINOIS
 DEPARTMENT OF TRANSPORTATION
 DIVISION OF HIGHWAYS

PLANS FOR PROPOSED
 FEDERAL AID HIGHWAY

HILL ROAD OVER NORTH BRANCH NIPPERSINK CREEK
 SECTION: 08-00356-00-BR
 PROJECT NO: BROS-0111 (053)
 BRIDGE REPLACEMENT
 MCHENRY COUNTY
 JOB NO: C-91-099-09

TR	SECTION	COUNTY	TOTAL SHEETS	SHEET NO.
21	08-00356-00-BR	MCHENRY	67	1
FED. ROAD DIST. NO. 1		ILLINOIS	CONTRACT NO. 63666	

+1=68



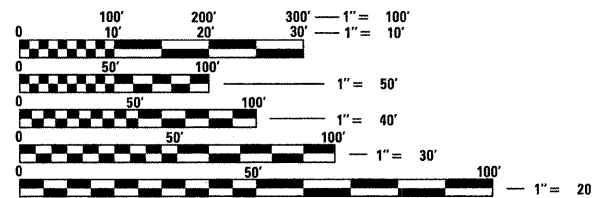
SA
STRAND ASSOCIATES*
 1170 SOUTH HOLSOLT ROAD
 JOLIET, ILLINOIS 60431
 (815) 744-4800

TRAFFIC DATA

HILL ROAD
 POSTED SPEED LIMIT = 45 MPH
 DESIGN SPEED LIMIT = 50 MPH
 2005 ADT = 1200
 2030 ADT = 6000

DESIGN DESIGNATION:

HILL ROAD: 3585(12) URBAN LOCAL 0.27 (FD-20)

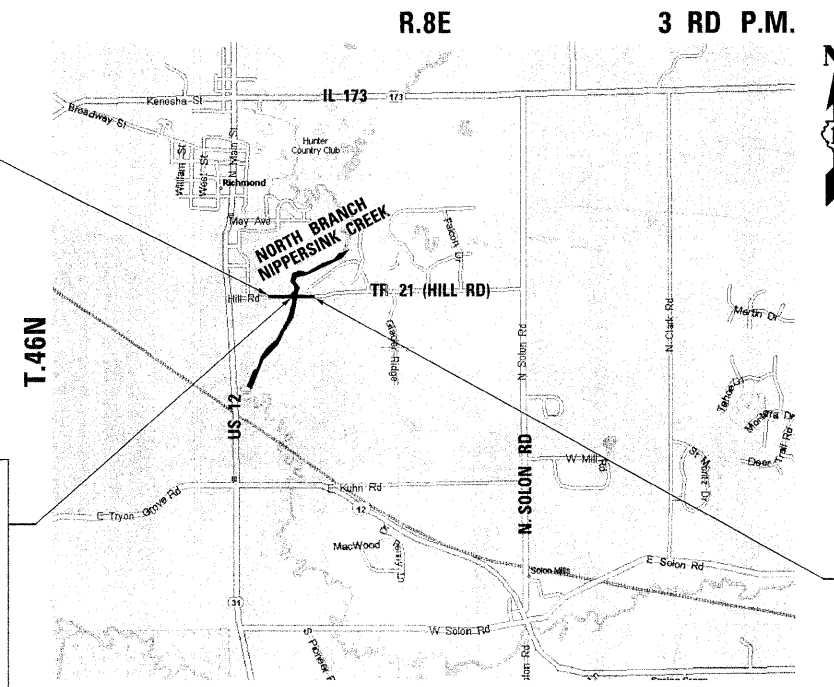


FULL SIZE PLANS HAVE BEEN PREPARED USING STANDARD ENGINEERING SCALES. REDUCED SIZED PLANS WILL NOT CONFORM TO STANDARD SCALES. IN MAKING MEASUREMENTS ON REDUCED PLANS, THE ABOVE SCALES MAY BE USED.

J.U.L.I.E.
 JOINT UTILITY LOCATION INFORMATION FOR EXCAVATION
 1-800-892-0123
 OR 811

HILL ROAD
 IMPROVEMENT BEGIN
 STA. 103 + 00

STRUCTURE REMOVAL
 AND REPLACEMENT
 STA. 109 + 89.00
 (EXISTING S.N. 056-3045)
 (PROPOSED S.N. 056-3192)
 HILL ROAD OVER
 NORTH BRANCH
 NIPPERSINK CREEK



LOCATION MAP
 NOT TO SCALE

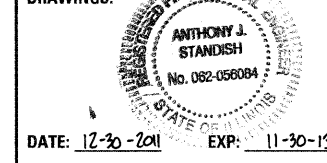
RICHMOND TOWNSHIP

GROSS LENGTH OF IMPROVEMENT = 1035 LF OR (0.20 MILES)

NET LENGTH OF IMPROVEMENT = 1035 LF OR (0.20 MILES)

HILL ROAD
 IMPROVEMENT END
 STA. 113 + 35

STRAND ASSOCIATES, INC.
 ANTHONY J. STANDISH, P.E. S.E.
 THIS STAMP APPLIES TO
 DRAWINGS:



STATE OF ILLINOIS
 DEPARTMENT OF TRANSPORTATION
 DIVISION OF HIGHWAYS

Approved December 22, 2011
Joseph R. Trzaskowski Jr.
 County of McHenry, County Engineer

Passed January 4, 2012
C. J. H. H. H.
 District 1 Engineer of Local Roads & Streets

Releasing for Bid
 Based on Limited
 Review JANUARY 4, 2012
Diana M. O'Neil
 Deputy Director of Highways, Region 1 Engineer

**PRINTED BY THE AUTHORITY
 OF THE STATE OF ILLINOIS**

CONTRACT NO. 63666