

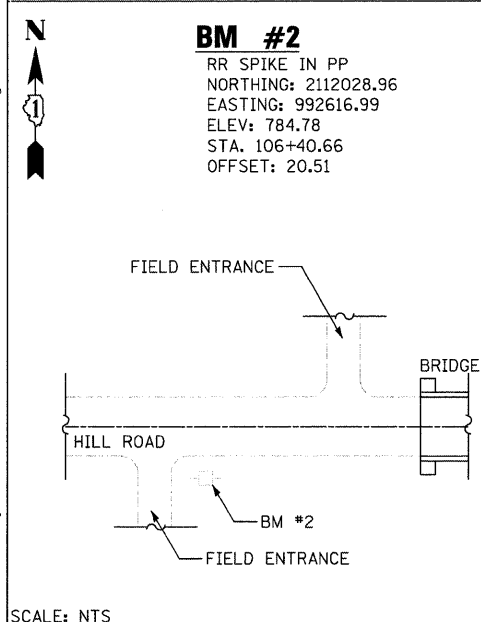
CURVE 1 DATA
 PROP. CURVE PR_HILL-1
 PI STA. = 115+50.02
 $\Delta = 10^\circ 27' 21''$ (LT)
 $D = 4^\circ 05' 45''$
 $R = 1,399.21'$
 $T = 128.03'$
 $L = 255.29'$
 $E = 5.84'$
 $e = N/A$
 $T.R. = N/A$
 $S.E. RUN = N/A$
 $P.C. STA = 114+21.99$
 $P.T. STA = 116+77.28$

TIE-POINTS
 CP #15
 CP #20
 CP #25
 CP #30

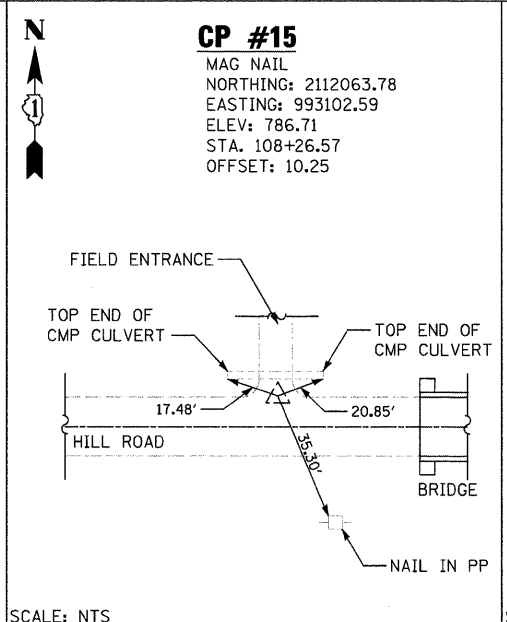
BENCHMARK
 BM #2
 BM #3

DATUM = NAVD 88

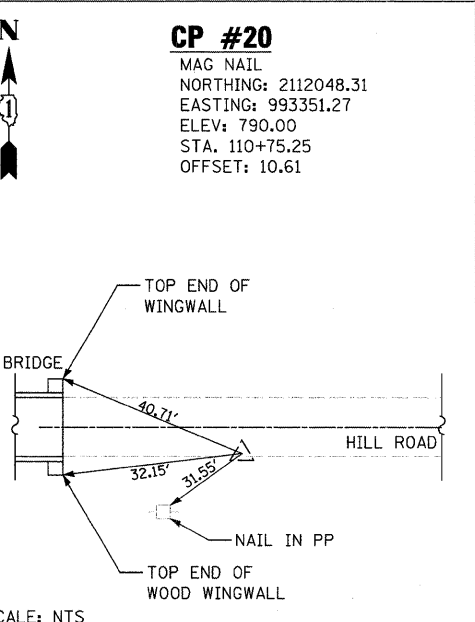
BM #1
 CHISELED SQUARE ON EAST CURB AT EAST END OF CURB ON THE EAST SIDE OF THE ENTRANCE TO NIPPERSINK PUBLIC LIBRARY. APPROXIMATELY 890 FEET WEST OF THE STRUCTURE. ELEV. 793.44



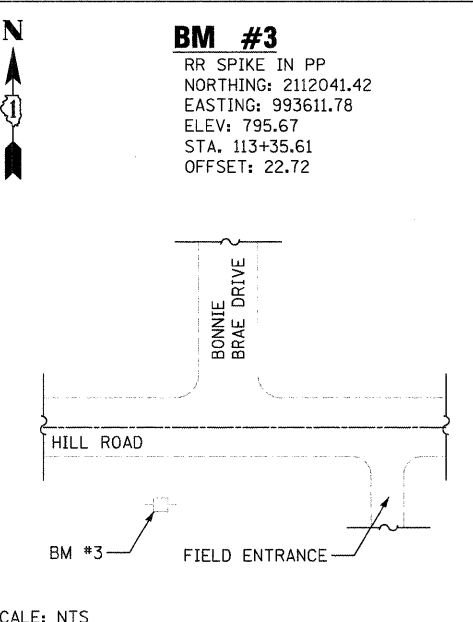
BM #2
 RR SPIKE IN PP
 NORTHING: 2112028.96
 EASTING: 992616.99
 ELEV: 784.78
 STA. 106+40.66
 OFFSET: 20.51



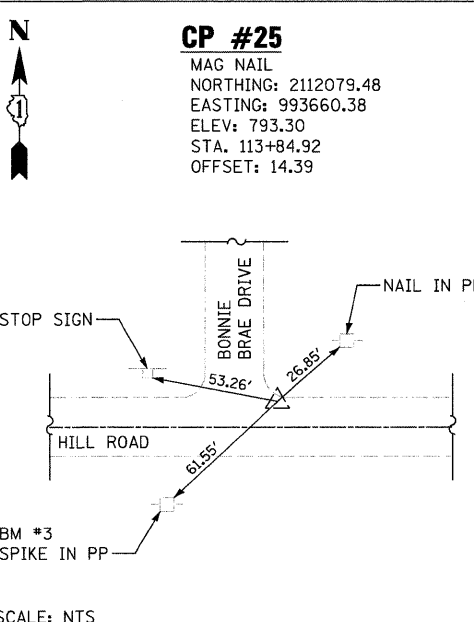
CP #15
 MAG NAIL
 NORTHING: 2112063.78
 EASTING: 993102.59
 ELEV: 786.71
 STA. 108+26.57
 OFFSET: 10.25



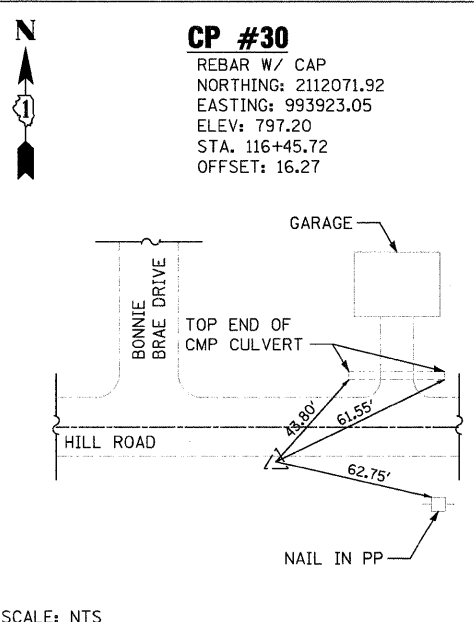
CP #20
 MAG NAIL
 NORTHING: 2112048.31
 EASTING: 993351.27
 ELEV: 790.00
 STA. 110+75.25
 OFFSET: 10.61



BM #3
 RR SPIKE IN PP
 NORTHING: 2112041.42
 EASTING: 993611.78
 ELEV: 795.67
 STA. 113+35.61
 OFFSET: 22.72



CP #25
 MAG NAIL
 NORTHING: 2112079.48
 EASTING: 993660.38
 ELEV: 793.30
 STA. 113+84.92
 OFFSET: 14.39



CP #30
 REBAR W/ CAP
 NORTHING: 2112071.92
 EASTING: 993923.05
 ELEV: 797.20
 STA. 116+45.72
 OFFSET: 16.27

	1170 SOUTH HOUBOLT ROAD JOLIET, ILLINOIS 60431 (815) 744-4200	USER NAME = brianf	DESIGNED VLF	REVISED -	MCHENRY COUNTY DIVISION OF TRANSPORTATION HILL ROAD BRIDGE OVER NORTH BRANCH NIPPERSINK CREEK	ALIGNMENT, TIES AND BENCHMARKS			TR 21	SECTION 08-00356-00-BR	COUNTY MCHENRY	TOTAL SHEETS 67	SHEET NO. 11
	PLOT SCALE = 40,0000' / IN.	CHECKED AJS	REVISED -	REVISED -		SCALE: AS SHOWN	SHEET NO.	OF	SHEETS	STA.	TO STA.	CONTRACT NO. 63666	
	PLOT DATE = 1/3/2012	DATE -	REVISED -	REVISED -					FED. ROAD DIST. NO. 1 ILLINOIS FED. AID PROJECT				

FILE NAME = s:\j\16800-6899\6842\07\micro\cadd sheets\01-63666-hill-RTB.dgn