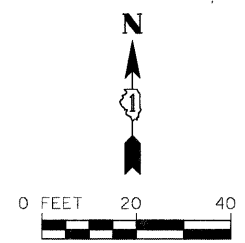
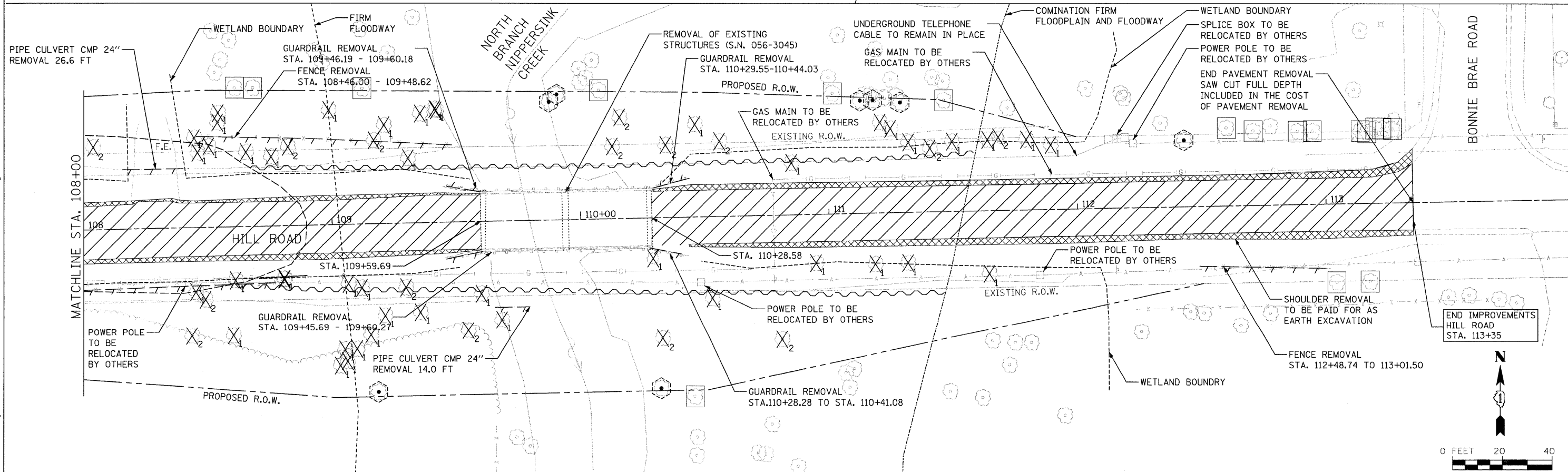
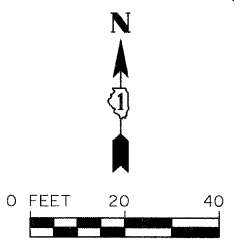


- LEGEND**
- PAVEMENT REMOVAL
 - AGG. SHOULDER AND AGG. ENTRANCE REMOVAL TO BE PAID FOR AS EARTH EXCAVATION
 - TREE REMOVAL (6 TO 15 UNITS DIAMETER)
 - TREE REMOVAL (OVER 15 UNITS DIAMETER)
 - TREE TRUNK PROTECTION AND TEMPORARY FENCE
 - WETLAND
 - REMOVAL ITEMS
 - TREE AND TREE ROOT PRUNING (ALL SIZES)



FILE NAME = s:\j\16800-6894-007\macro\cead sheeta\01-63666-ht-removal.dgn

1170 SOUTH HOUBOLT ROAD JOLIET, ILLINOIS 60431 (815) 744-4200	USER NAME = brianf	DESIGNED VLF	REVISED -	MCHENRY COUNTY DIVISION OF TRANSPORTATION HILL ROAD BRIDGE OVER NORTH BRANCH NIPPERSINK CREEK	REMOVAL PLAN			TR	SECTION	COUNTY	TOTAL SHEETS	SHEET NO.	
	DRAWN SMH CHECKED AJS PLOT SCALE = 20,0000' / IN. PLOT DATE = 1/3/2012	DATE -	REVISED -					21	08-00356-00-BR	MCHENRY	67	12	
								SCALE: AS SHOWN SHEET NO. OF SHEETS STA. TO STA.				CONTRACT NO. 63666 FED. ROAD DIST. NO. 1 ILLINOIS FED. AID PROJECT	