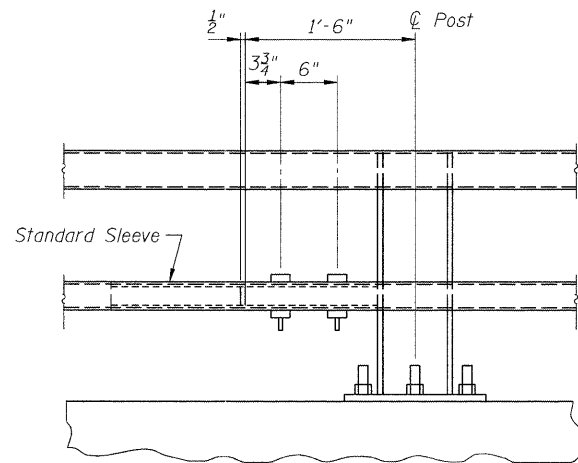
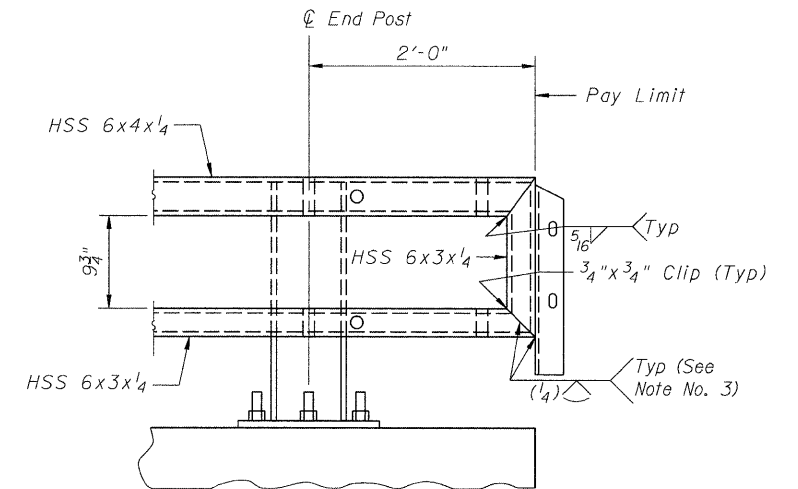


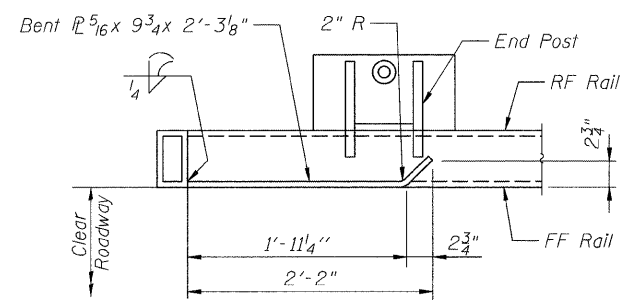
**ELEVATION AT TRAFFIC BARRIER TERMINAL (SPECIAL) (DEPARTURE ENDS)**



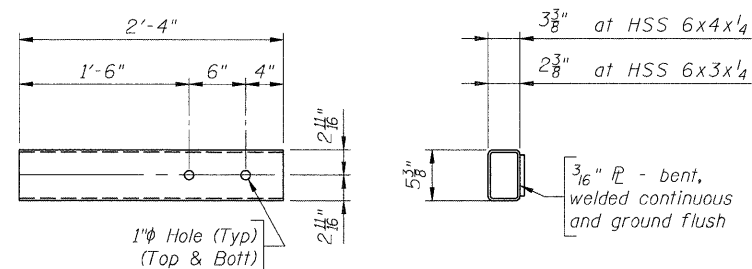
**STANDARD SPLICE (Top or bottom rail)**



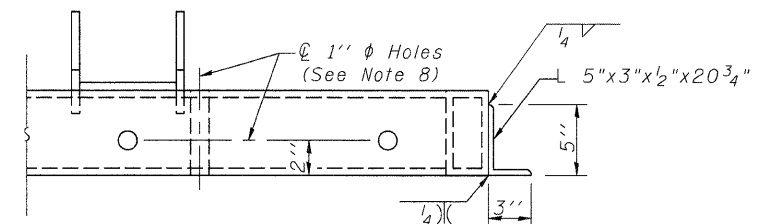
**ELEVATION AT TERMINAL TYPE 6A (SPECIAL) (APPROACH ENDS)**



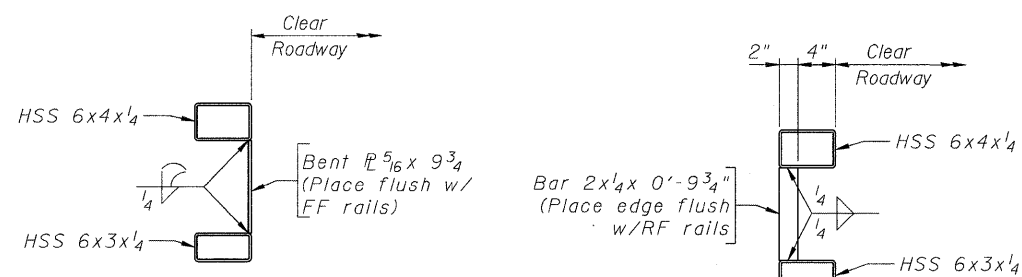
**BENT PLATE SECTION (Top rail not shown)**



**STANDARD SLEEVE DETAILS**



**TOP VIEW**

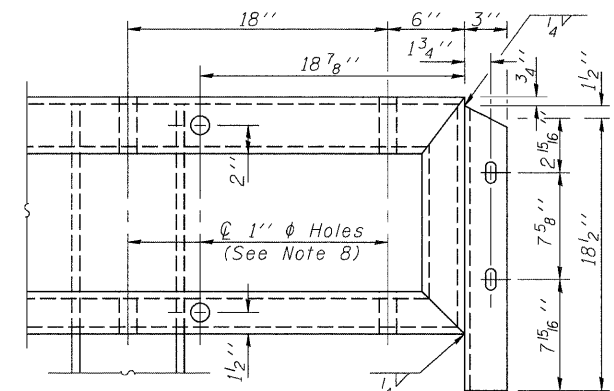


**SECTION C-C**

**BRACE BAR DETAIL (See Note No. 4)**

**NOTES**

- 1) Either top or bottom rail in terminal section may be the longer rail.
- 2) Ensure each rail length is continuous over a minimum of two posts. Railing that is part of a Traffic Barrier Terminal is continuous if either the top or bottom rail in the terminal is continuous over a minimum of two posts.
- 3) Ensure the fabricator prepares a sample of the indicated joint and it is macroetched to demonstrate that the required effective throat is achieved.
- 4) Ensure a Brace Bar is placed 2'-0" from the splice end of the shorter tube at Traffic Barrier Terminals.
- 5) Splices may be located on either side of post.
- 6) Not more than one splice is permitted per side of post.
- 7) Do not shop splice rails.
- 8) Holes in steel railing may be field drilled for connection to Traffic Barrier Terminals. Any galvanized steel exposed or damaged by drilling operation shall be painted with two coats of a zinc-rich paint conforming to ASTM A 780.



**FRONT VIEW**

**END CONNECTION ANGLES (APPROACH ENDS ONLY)**

FILE NAME = s:\jcl\5800-6899\6842\087\micro\cadd\sheet\struct\056-3192-63666-008-WRail.dgn

	1170 SOUTH HOUBOLT ROAD JOLIET, ILLINOIS 60431 (815) 744-4200	USER NAME = brianf	DESIGNED RRD	REVISED -	<b>MCHENRY COUNTY DIVISION OF TRANSPORTATION</b> <b>HILL ROAD BRIDGE OVER</b> <b>NORTH BRANCH NIPPERSINK CREEK</b>	<b>WYOMING 2-TUBE BRIDGE RAILING DETAILS (2 OF 2)</b> <b>STRUCTURE NO. 056-3192</b> SHEET NO. 9 OF 18 SHEETS	TR	SECTION	COUNTY	TOTAL SHEETS	SHEET NO.
		PLOT SCALE =	CHECKED AJS	REVISED -			21	08-00356-00-BR	MCHENRY	67	39
	PLOT DATE = 1/3/2012	DRAWN B/JF	REVISED -								CONTRACT NO. 63666
		CHECKED RRD	REVISED -								ILLINOIS FED. AID PROJECT