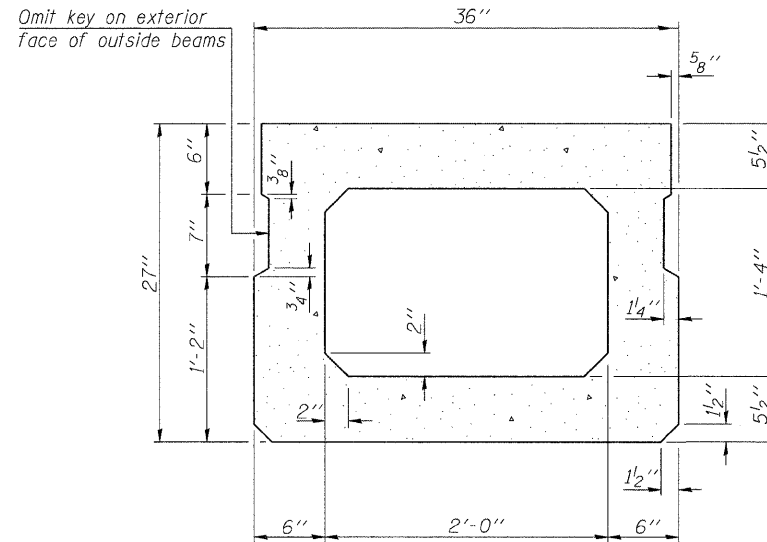
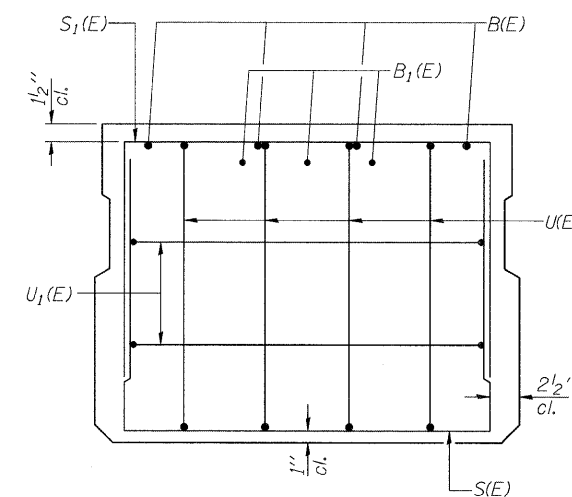


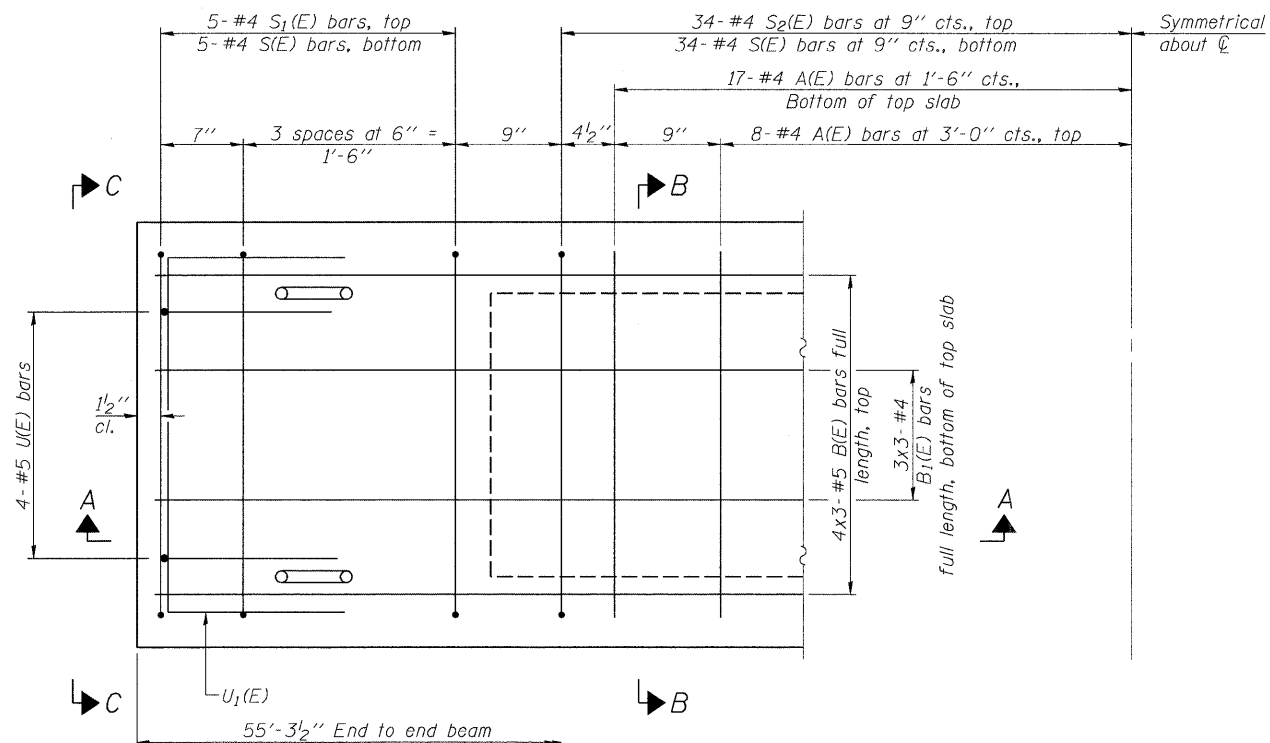
SECTION A-A



SECTION B-B  
(Showing dimensions)

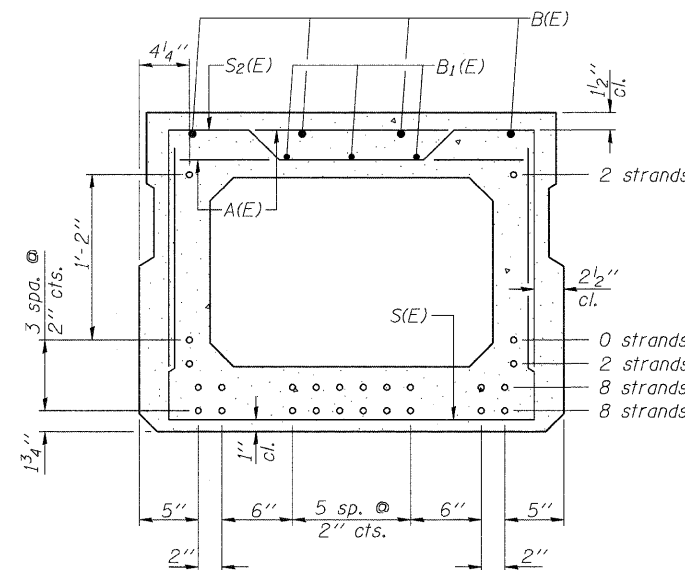


VIEW C-C



PLAN VIEW

Note: Spacing of S(E) and S2(E) bars may be adjusted up to 4" in the immediate area of the transverse tie diaphragms to miss the block outs for the transverse ties.



SECTION B-B

(Showing reinforcement and permissible strand locations)  
Note: Place the number of strands specified in each row symmetrically about the centerline of beam in the permissible strand locations shown.

DESIGN STRESSES

$f'_c = 6,000$  psi  
 $f'_{ci} = 5,000$  psi  
 $f_{pu} = 270,000$  psi (1/2" low lax. strands)  
 $f_{pbt} = 201,960$  psi (1/2" low lax. strands)

BAR LIST  
ONE BEAM ONLY

(For information only)

Bar	No.	Size	Length	Shape
A(E)	50	#4	2'-7"	—
B(E)	12	#5	20'-2"	—
B1(E)	9	#4	19'-10"	—
D(E)	14	#4	2'-9"	U
S(E)	78	#4	6'-5"	U
S1(E)	10	#4	5'-11"	U
S2(E)	68	#4	6'-2"	U
U(E)	8	#5	4'-6"	U
U1(E)	4	#4	5'-0"	U

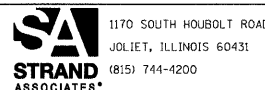
Note:  
See sheet 11 of 18 for additional details and Bill of Material.  
Bars indicated thus 4x3-#5 ect. indicates 4 lines of bars with 3 lengths per line.  
See sheet 5 of 18 for D(E) bar bend diagram.

MINIMUM BAR LAP

#4 bar = 2'-0"  
 #5 bar = 2'-6"

PD-2736-0

7-1-10



1170 SOUTH HOUBOLT ROAD  
JOLIET, ILLINOIS 60431  
(815) 744-4200

USER NAME = brionf  
 DESIGNED RRD  
 CHECKED AJS  
 DRAWN BJF  
 CHECKED RRD

PLOT SCALE =  
 PLOT DATE = 1/3/2012

REVISIONS  
 REVISED -  
 REVISED -  
 REVISED -  
 REVISED -

MCHENRY COUNTY DIVISION OF TRANSPORTATION  
 HILL ROAD BRIDGE OVER  
 NORTH BRANCH NIPPERSINK CREEK

27" x 36" PPC DECK BEAM  
 STRUCTURE NO. 056-3192

SHEET NO. 10 OF 18 SHEETS

TR	SECTION	COUNTY	TOTAL SHEETS	SHEET NO.
21	08-00356-00-BR	MCHENRY	67	40
CONTRACT NO. 63666				

ILLINOIS FED. AID PROJECT

FILE NAME = s:\p1\6800-6899\6842\007\micro\cadd sheets\structure\056-3192-63666-010-8EAM.dgn