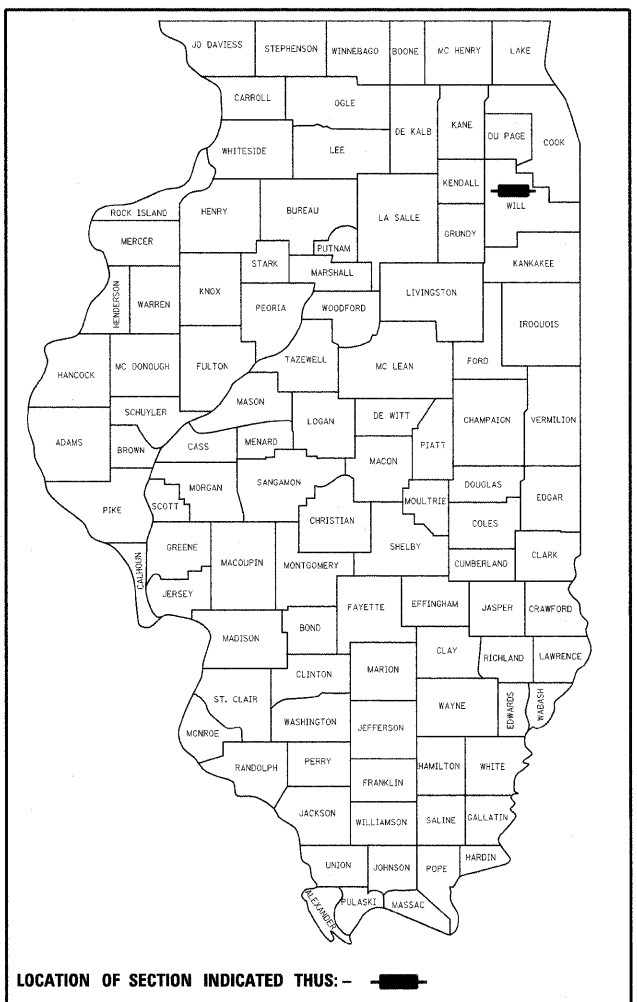


F.A.U. RTE.	SECTION	COUNTY	TOTAL SHEETS	SHEET NO.
324	04-00036-22-TL	WILL	152	1
PROJ. RS-CMM-8003(612)		ILLINOIS	CONTRACT NO. 63671	

+1 = 153



LOCATION OF SECTION INDICATED THUS: -

# STATE OF ILLINOIS

## DEPARTMENT OF TRANSPORTATION

### DIVISION OF HIGHWAYS

# PLANS FOR PROPOSED FEDERAL AID PROJECT

**FAU ROUTE 324 / WILL CH 14 (PLAINFIELD NAPERVILLE ROAD)**

**AT FAU ROUTE 3767 (119TH STREET)**

**SECTION 04-00036-22-TL**

**PROJECT RS-CMM-8003(612)**

**INTERSECTION IMPROVEMENT**

**WILL COUNTY**

**C-91-284-06**

### INDEX OF SHEETS

SHEET NO.	DESCRIPTION
1	COVER SHEET
2	GENERAL NOTES AND SUPPLEMENTAL LEGEND
3	SUMMARY OF QUANTITIES
4-5	TYPICAL SECTIONS
6-9	SCHEDULES OF QUANTITIES
10	ALIGNMENT AND TIES
11-18	ROADWAY PLAN AND PROFILE - PLAINFIELD NAPERVILLE ROAD
19-25	ROADWAY PLAN AND PROFILE - 119TH STREET / RODEO DRIVE
26-30	STAGING PLANS - PLAINFIELD NAPERVILLE ROAD
31-35	STAGING PLANS - 119TH STREET / RODEO DRIVE
36-37	EROSION CONTROL PLANS
38-39	EROSION CONTROL STANDARDS
40-46	UTILITY PLAN AND PROFILE - PLAINFIELD NAPERVILLE ROAD
47-53	UTILITY PLAN AND PROFILE - 119TH STREET / RODEO DRIVE
54	INTERSECTION GRADING PLAN
55-56	PAVEMENT MARKING PLANS
57-66	TRAFFIC SIGNAL PLANS
67	DRIVEWAY DETAILS
68-70	DISTRICT DETAILS
71-80	PRE-STAGE CROSS SECTIONS - PLAINFIELD NAPERVILLE ROAD
81-92	PRE-STAGE CROSS SECTIONS - 119TH STREET / RODEO DRIVE / RODEO DRIVE
93-122	CROSS SECTIONS - PLAINFIELD NAPERVILLE ROAD
123-152	CROSS SECTIONS - 119TH STREET / RODEO DRIVE

### HIGHWAY STANDARDS

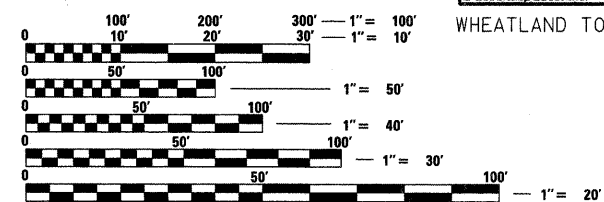
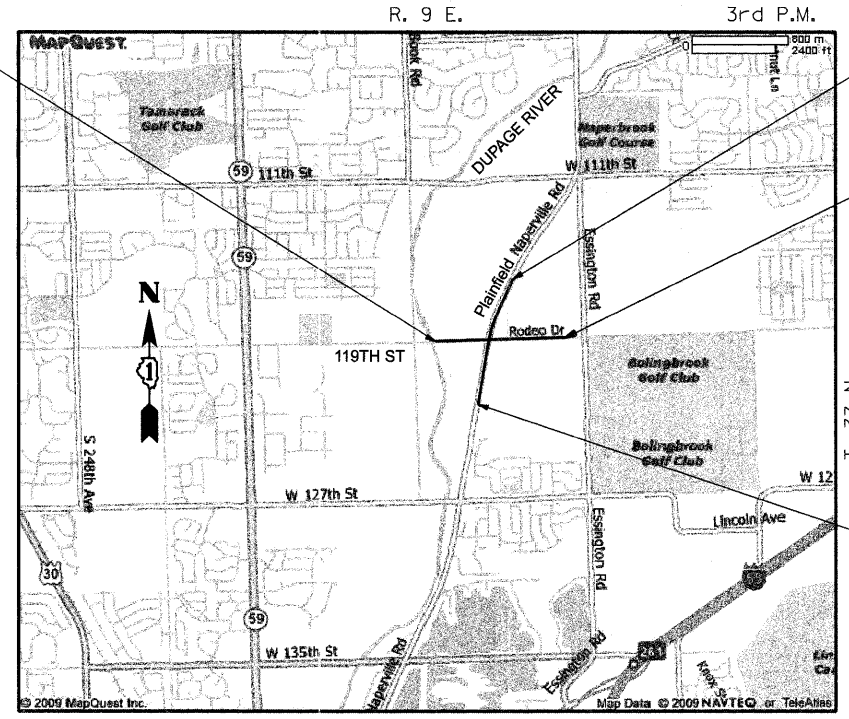
- 000001-06 STANDARD SYMBOLS, ABBREVIATIONS AND PATTERNS
- 280001-06 TEMPORARY EROSION CONTROL SYSTEMS
- 424001-06 PERPENDICULAR CURB RAMPS FOR SIDEWALKS
- 442201-03 CLASS C AND D PATCHES
- 542301-03 PRECAST REINFORCED CONCRETE FLARED END SECTION
- 542306-02 PRECAST REINFORCED CONCRETE ELLIPTICAL FLARED END SECTION
- 542311-03 GRATING FOR CONCRETE FLARED END SECTION
- 602001-02 CATCH BASIN TYPE A
- 602011-02 CATCH BASIN TYPE C
- 602301-03 INLET - TYPE A
- 602401-03 MANHOLE TYPE A
- 602411-03 MANHOLE TYPE A - 7' (2.1M) DIAMETER
- 602601-02 PRECAST REINFORCED CONCRETE FLAT SLAB TOP
- 602701-02 MANHOLE STEPS
- 604001-03 FRAME AND LIDS TYPE 1
- 604006-04 FRAME AND GRATE TYPE 3
- 604011-04 FRAME AND GRATE TYPE 3V
- 604036-02 GRATE TYPE 8
- 604091-02 FRAME AND GRADE TYPE 24
- 606001-04 CONCRETE CURB TYPE B AND COMBINATION CONCRETE CURB AND GUTTER
- 606006-02 OUTLETS FOR CONC. CURB AND GUTTER TYPE B-6.24 (B-15.60)
- 606301-04 PC CONCRETE ISLANDS AND MEDIANS
- 635011-02 REFLECTOR MARKER AND MOUNTING DETAILS
- 701001-02 OFF-RD OPERATIONS, 2L, 2W, MORE THAN 15' (4.5 m) AWAY
- 701006-03 OFF-RD OPERATIONS, 2L, 2W, 15' (4.5 m) TO 24" (600 mm) FROM PAVEMENT EDGE
- 701011-02 OFF-RD MOVING OPERATIONS, 2L, 2W, DAY ONLY
- 701201-04 LANE CLOSURE, 2L, 2W, DAY ONLY, FOR SPEEDS ≥ 45 MPH
- 701301-04 LANE CLOSURE, 2L, 2W, SHORT TIME OPERATIONS
- 701306-03 LANE CLOSURE, 2L, 2W, SLOW MOVING OPERATIONS, DAY ONLY, FOR SPEEDS ≥ 45 MPH
- 701311-03 LANE CLOSURE, 2L, 2W MOVING OPERATIONS - DAY ONLY
- 701326-04 LANE CLOSURE, 2L, 2W, PAVEMENT WIDENING, FOR SPEEDS ≥ 45 MPH
- 701601-07 URBAN LANE CLOSURE, MULTILANE, 1W OS 2W WITH NONTRAVERSABLE MEDIAN
- 701701-08 URBAN LANE CLOSURE, MULTILANE INTERSECTION
- 701901-02 TRAFFIC CONTROL DEVICES
- 704001-07 TEMPORARY CONCRETE BARRIERS
- 720001-01 SIGN PANEL MOUNTING DETAILS
- 720006-03 SIGN PANEL ERECTION DETAILS
- 720011-01 METAL POSTS FOR SIGNS, MARKERS AND DELINEATORS
- 720016-03 MAST ARM MOUNTED STREET NAME SIGNS
- 729001-01 APPLICATIONS OF TYPES A & B METAL POSTS (FOR SIGNS & MARKERS)
- 780001-03 TYPICAL PAVEMENT MARKINGS
- 781001-03 TYPICAL APPLICATIONS RAISED REFLECTIVE PAVEMENT MARKERS
- 805001-01 ELECTRICAL SERVICE INSTALLATION DETAILS
- 814001-02 HANDHOLES
- 814006-02 DOUBLE HANDHOLES
- 857001-01 STANDARD PHASE DESIGNATION DIAGRAMS AND PHASE SEQUENCES
- 862001-01 UNINTERRUPTABLE POWER SUPPLY (UPS)
- 873001-02 TRAFFIC SIGNAL GROUNDING & BONDING
- 877001-05 STEEL MAST ARM ASSEMBLY AND POLE 16' THROUGH 55'
- 877002-02 STEEL MAST ARM ASSEMBLY AND POLE 56' THROUGH 75'
- 877012-02 STEEL COMBINATION MAST ARM ASSEMBLY & POLE 56' - 75'
- 878001-09 CONCRETE FOUNDATION DETAILS
- 880006-01 TRAFFIC SIGNAL MOUNTING DETAILS
- 886001-01 DETECTOR LOOP INSTALLATIONS
- 886006-01 TYPICAL LAYOUTS FOR DETECTION LOOPS
- BLR 24-2 MAILBOX TURNOUT FOR LOCAL ROADS

119TH STREET / RODEO DRIVE IMPROVEMENT BEGINS STATION 293+49

PLAINFIELD NAPERVILLE ROAD IMPROVEMENT BEGINS STATION 205+35

119TH STREET / RODEO DRIVE IMPROVEMENT ENDS STATION 330+52

PLAINFIELD NAPERVILLE ROAD IMPROVEMENT ENDS STATION 245+14



FULL SIZE PLANS HAVE BEEN PREPARED USING STANDARD ENGINEERING SCALES. REDUCED SIZED PLANS WILL NOT CONFORM TO STANDARD SCALES. IN MAKING MEASUREMENTS ON REDUCED PLANS, THE ABOVE SCALES MAY BE USED.

**LOCATION MAP**

APPROXIMATE SCALE: 0 1/2 MILE

PLAINFIELD NAPERVILLE ROAD LENGTH 3979' = .754 MILE  
 119TH STREET / RODEO DRIVE LENGTH 3703' = .701 MILE

AVERAGE DAILY TRAFFIC (ADT) DATA:  
 PLAINFIELD NAPERVILLE RD: EXISTING 7800 (2003) DESIGN 12500  
 119TH ST: EXISTING 4500 (2003) DESIGN 7200

DESIGN SPEED: 45 M.P.H.  
 POSTED SPEED: 45 M.P.H.



STATE OF ILLINOIS DEPARTMENT OF TRANSPORTATION  
 DIVISION OF HIGHWAYS

Approved: JANUARY 4<sup>TH</sup> 2012  
*[Signature]*  
 Will County Engineer

Passed: JANUARY 9, 2012  
*[Signature]*  
 District 1 Engineer of Local Roads & Streets

Releasing for Bid Based on Limited Review: JANUARY 9, 2012  
*[Signature]*  
 Deputy Directory of Highways, Region 1 Engineer

**PRINTED BY THE AUTHORITY OF THE STATE OF ILLINOIS**

DATE: DECEMBER 2011  
 CHRISTOPHER J. MCCLURE  
 REGISTERED PROFESSIONAL ENGINEER  
 EXPIRES: 11-30-13

**HAMPTON, LENZINI AND RENWICK, INC.**  
 CIVIL ENGINEERS • STRUCTURAL ENGINEERS • LAND SURVEYORS

**ELR**  
 380 SHEPARD DRIVE  
 ELGIN, ILLINOIS 60123  
 847.697.6700 www.hlrengineering.com

184.000959  
 ILLINOIS PROFESSIONAL DESIGN FIRM LS / PE / SE CORPORATION

PROJECT NUMBER: 07.0116.330 DATE: 09/30/2010

PROGRAM AND OFFICE ENGINEER: CHARLES F. RIDDLE, P.E. (847)705-4206 SCHAUMBURG, IL

**PROJECT ENGINEER: CJM**  
**PROJECT MANAGER: MAS**  
**CONTRACT NO. 63671**