

**BENCHMARKS**

BM#6002 - WCHD DISC STAMPED "624.39" ON HEADWALL IN THE SWX OF 119TH ST. BRIDGE @ DUPAGE RIVER  
ELEVATION = 624.39

BM#6070 - CUT BOX ON SE WINGWALL OF 119th STREET / RODEO DRIVE BRIDGE @ DUPAGE RIVER  
ELEVATION 623.96

BM "A" - RR SPIKE IN PP #5 WEST OF PLAINFIELD NAPERVILLE ROAD ON 119TH ST.  
2.2 AGL  
ELEVATION 622.63

BM "B" - RR SPIKE IN PP @ SWX OF PLAINFIELD NAPERVILLE ROAD & 119TH ST.  
1.45 AGL  
ELEVATION 635.18

BM "C" - RR SPIKE IN PP @ RES #11746 ON NAPERVILLE-PLAINFIELD ROAD NORTH OF 119TH ST.  
1.7 AGL  
ELEVATION 638.37

BM "D" - RR SPIKE IN 4TH PP EAST OF NAPERVILLE-PLAINFIELD ROAD NORTH SIDE OF 119TH ST.  
1.50 AGL  
ELEVATION 640.88

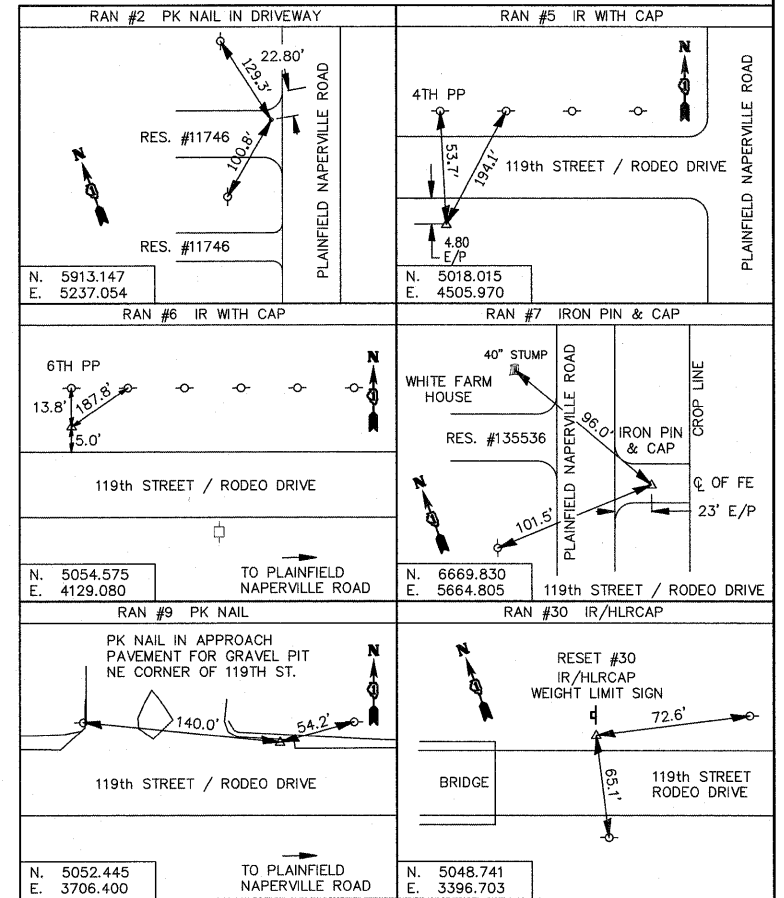
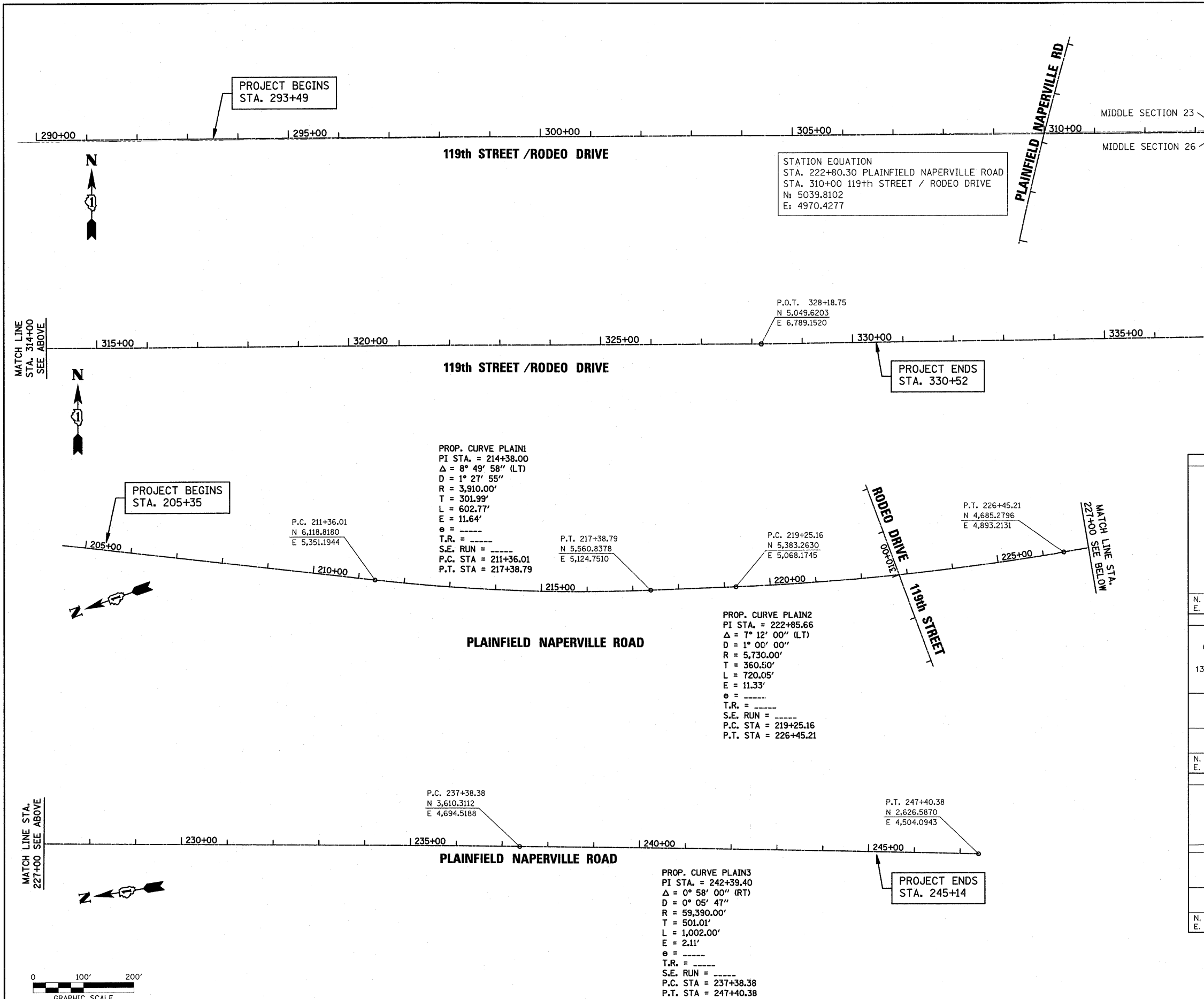
BM "E" - RR SPIKE IN 4TH PP SOUTH OF 119TH ON NAPERVILLE-PLAINFIELD ROAD WEST SIDE.  
1.50 AGL  
ELEVATION 639.90

BM "F" - RR SPIKE IN 7TH PP EAST OF NAPERVILLE-PLAINFIELD ROAD ON NORTH SIDE OF 119TH ST.  
ELEVATION 639.77

BM "G" - RR SPIKE IN 10TH PP EST OF NAPERVILLE-PLAINFIELD ROAD ON NORTH SIDE OF 119TH ST.  
AGL  
ELEVATION 638.64

BM "H" - " " ON LIGHT POLE BASE AT NEX OF FIRST SOUTH ENTRANCE TO PLAINFIELD EAST HIGH SCHOOL AND NAPERVILLE ROAD BY SCHOOL SIGN  
AGL  
ELEVATION 637.49

PROJECT DATUM IS NAVD 88.



FILE NAME = P:\070116\cod\phase 2\vdg\070116-shr-tie.dgn	USER NAME = #USER#	DESIGNED - CM	REVISED -	<b>STATE OF ILLINOIS DEPARTMENT OF TRANSPORTATION</b>		<b>ALIGNMENT AND TIES</b>		F.A.U. RTE. = 324	SECTION = 04-00036-22-TL	COUNTY = WILL	TOTAL SHEETS = 152	SHEET NO. = 10	
PLOT SCALE = #SCALE#	CHECKED - CM	REVISED -	SCALE: 1" = 40'			SHEET NO. 1 OF 1 SHEETS	STA. TO STA.	CONTRACT NO. 63671					
PLOT DATE = 1/5/2012	DATE = FEBRUARY 2009	REVISED -	ILLINOIS FED. AID PROJECT										