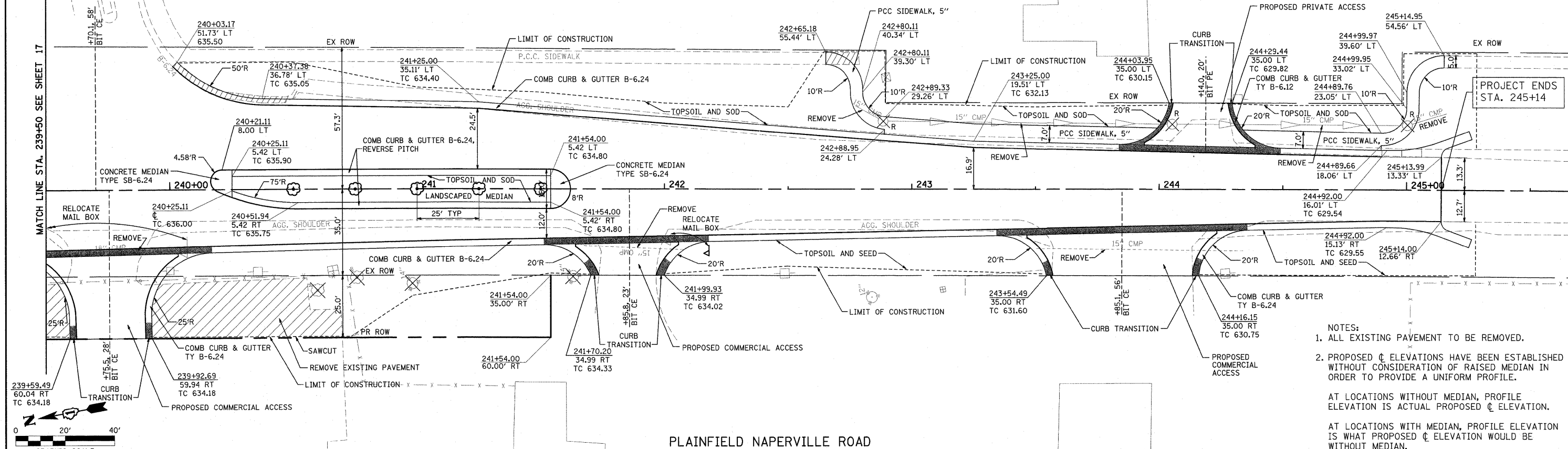


PLAN	DATE
BY	
REVIEWED	
PLOTTED	
NOTE BOOK	
NO.	

PROFILE	DATE
BY	
REVIEWED	
PLOTTED	
NOTE BOOK	
NO.	

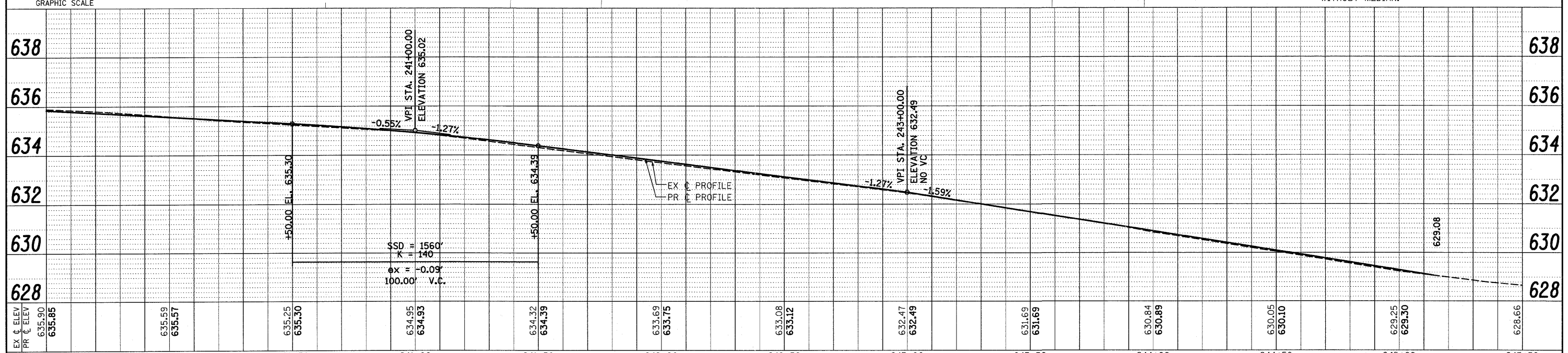
PROP. CURVE PLAIN3
 PI STA. = 242+39.40
 $\Delta = 0^\circ 58' 00''$ (RT)
 $D = 0^\circ 05' 47''$
 $R = 59,390.00'$
 $T = 501.01'$
 $L = 1,002.00'$
 $E = 2.11'$
 $e =$
 $T.R. =$
 $S.E. RUN =$
 $P.C. STA = 237+38.38$
 $P.T. STA = 247+40.38$

MATCH LINE STA. 239+50 SEE SHEET 17



NOTES:
 1. ALL EXISTING PAVEMENT TO BE REMOVED.
 2. PROPOSED ϕ ELEVATIONS HAVE BEEN ESTABLISHED WITHOUT CONSIDERATION OF RAISED MEDIAN IN ORDER TO PROVIDE A UNIFORM PROFILE.
 AT LOCATIONS WITHOUT MEDIAN, PROFILE ELEVATION IS ACTUAL PROPOSED ϕ ELEVATION.
 AT LOCATIONS WITH MEDIAN, PROFILE ELEVATION IS WHAT PROPOSED ϕ ELEVATION WOULD BE WITHOUT MEDIAN.

PLAINFIELD NAPERVILLE ROAD



FILE NAME =	USER NAME = #USER#	DESIGNED - CM	REVISED -	STATE OF ILLINOIS DEPARTMENT OF TRANSPORTATION		ROADWAY PLAN & PROFILE PLAINFIELD NAPERVILLE RD AT 119TH ST / RODEO DR	F.A.U. RTE.	SECTION	COUNTY	TOTAL SHEETS	SHEET NO.
pc:\070116\oad\phase 2\dwg\070116-shr-plain	pp08.dgn	DRAWN - JM	REVISED -				324	04-00036-22-TL	WILL	152	18
PLLOT SCALE = #SCALE#	CHECKED - CM	REVISED -	SCALE: 1" = 20'				SHEET NO. 8 OF 8 SHEETS	STA. 239+50 TO STA. 245+14	CONTRACT NO. 63671		ILLINOIS FED. AID PROJECT
PLLOT DATE = 1/5/2012	DATE - FEBRUARY 2009	REVISED -									