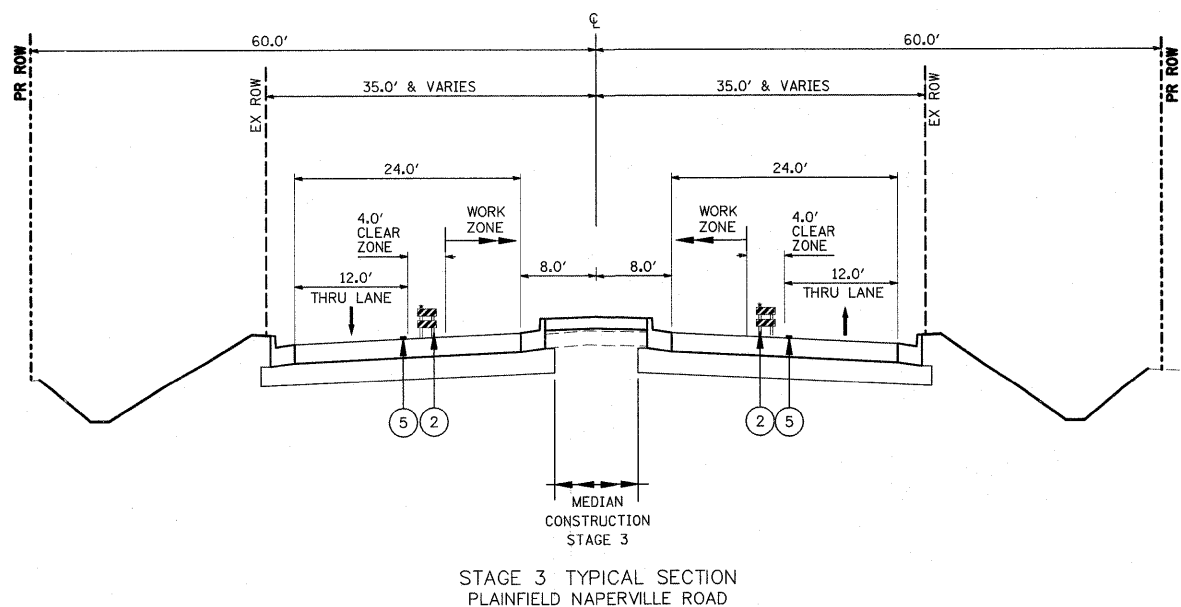
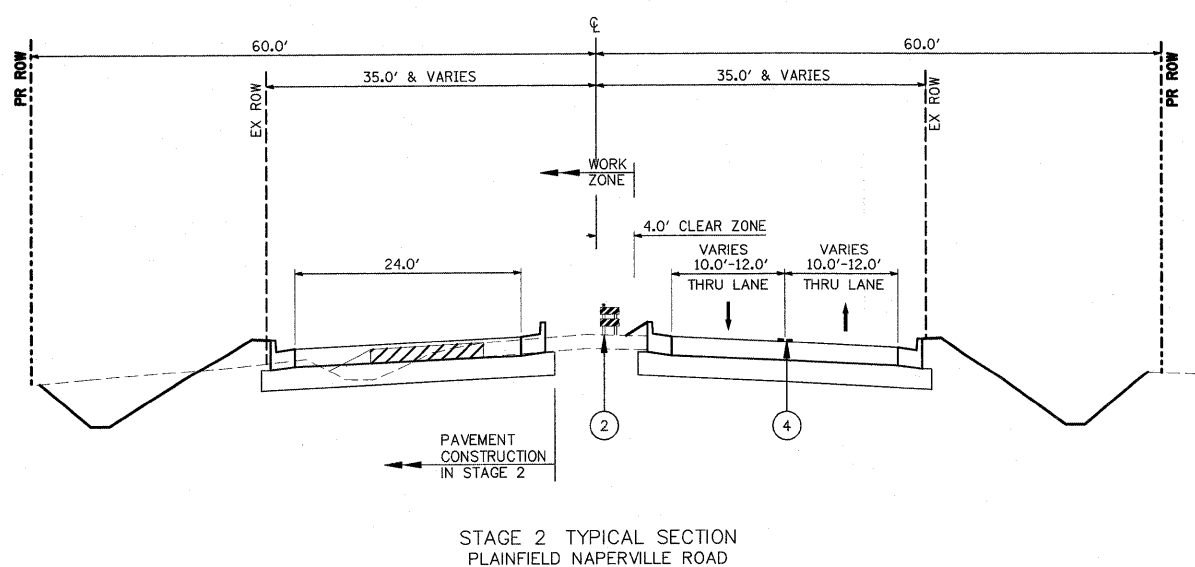
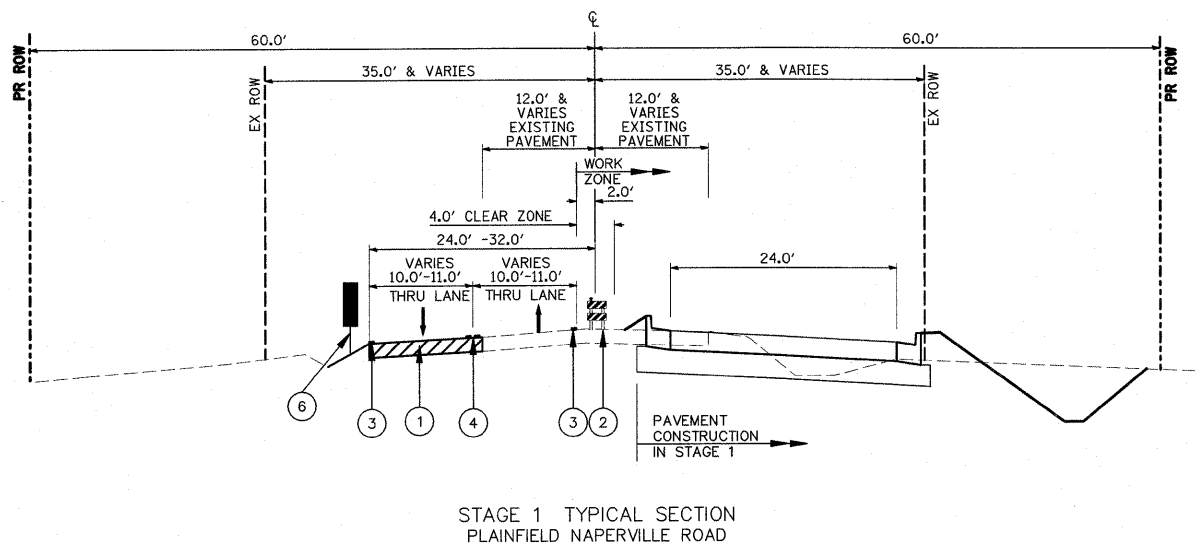
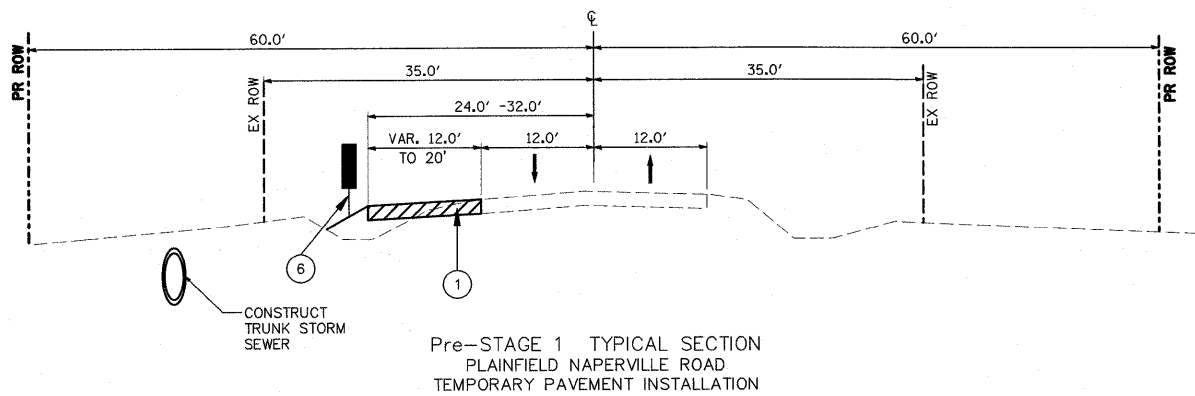


PLAINFIELD - NAPERVILLE ROAD



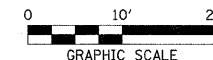
- PRE-STAGE 1
1. INSTALL EROSION CONTROL ON EAST SIDE.
  2. INSTALL TRUNK STORM SEWER AND CULVERTS AT STA. 220+25.
  3. INSTALL STORM SEWER LATERALS AND PAVEMENT PATCHES UNDER TRAFFIC USING FLAGGERS PER STANDARD 701501.
  4. INSTALL TEMPORARY PAVEMENT AND TEMPORARY SEEDING ON EAST SIDE UNDER TRAFFIC PER STANDARD 701326.
  5. INSTALL STAGE 1 PAVEMENT MARKINGS AND SWITCH TRAFFIC TO TEMPORARY PAVEMENT UNDER TRAFFIC IN ACCORDANCE WITH STANDARD 701501.
- STAGE 1
1. INSTALL EROSION CONTROL ON WEST SIDE.
  2. EXCAVATE FOR PAVEMENT AND DITCHES ON WEST SIDE.
  3. CONSTRUCT AGGREGATE SUBGRADE, CURB AND GUTTER, AND HMA PAVEMENT, TO BINDER COURSE.
  4. FINAL GRADE FROM BACK OF CURB TO ROW LINE.
  5. INSTALL TOPSOIL AND SEED.
  6. INSTALL TEMPORARY PAVEMENT AT NORTH END OF PROJECT.
  7. INSTALL STAGE 2 PAVEMENT MARKINGS AND SWITCH TRAFFIC.
- STAGE 2
1. EXCAVATE FOR PAVEMENT AND DITCHES ON EAST SIDE.
  2. CONSTRUCT AGGREGATE SUBGRADE, CURB AND GUTTER, AND HMA PAVEMENT FOR LEFT TURN LANES AND AT ENDS OF IMPROVEMENT AS NEEDED.
  3. FINAL GRADE FROM BACK OF CURB TO ROW LINE.
  4. INSTALL TOPSOIL AND SEED OR SOD.
  5. INSTALL STAGE 3 PAVEMENT MARKINGS AND SWITCH TRAFFIC.
  6. REMOVE TEMPORARY PAVEMENT AT ENDS OF PROJECT.
- STAGE 3
1. CONSTRUCT AGGREGATE SUBGRADE, CURB AND GUTTER, AND HMA PAVEMENT FOR LEFT TURN LANES AND AT ENDS OF IMPROVEMENT AS NEEDED.
  2. FILL IN CURB AND GUTTER GAPS IN MEDIAN.
  3. INSTALL TOPSOIL, SOD, AND PLANTINGS IN LANDSCAPED MEDIAN.
  4. PLACE HMA SURFACE COURSE.
  5. INSTALL FINAL PAVEMENT MARKINGS AND TRAFFIC SIGNALS. STOP BARS AND SIGNAL AHEAD WARNING SIGNS SHALL NOT BE INSTALLED UNTIL THE DAY THE SIGNAL IS ENERGIZED.

CONSTRUCTION STAGING  
TRAFFIC CONTROL AND PROTECTION GENERAL NOTES

1. TRAFFIC CONTROL AND PROTECTION SHALL BE IN ACCORDANCE WITH THE STANDARD SPECIFICATIONS, PROJECT SPECIAL PROVISIONS, CONSTRUCTION STAGING PLANS, AND AS DIRECTED BY THE ENGINEER. TRAFFIC CONTROL SHOWN IN THE CONSTRUCTION STAGING PLAN REPRESENTS A GUIDE FOR THE SAFE MANAGEMENT OF TRAFFIC DURING THE EXECUTION OF THE WORK. MODIFICATIONS MAY BE DESIRABLE OR NECESSARY DUE TO LOCAL CONDITIONS AT THE TIME OF CONSTRUCTION. ANY PROPOSED CHANGES BY THE CONTRACTOR TO THESE TRAFFIC CONTROL PLANS SHALL BE APPROVED BY THE ENGINEER PRIOR TO BEING IMPLEMENTED. ANY MODIFICATIONS OR ADDITIONS REQUIRED BY THE ENGINEER WILL BE INCLUDED IN THE COST OF THE APPLICABLE TRAFFIC CONTROL PAY ITEMS.
2. ALL TRAFFIC CONTROL DEVICES REQUIRED FOR THIS CONTRACT WILL BE INCLUDED IN THE COST OF THE APPLICABLE TRAFFIC CONTROL PAY ITEMS. FOR THE PURPOSES OF THIS REQUIREMENT, TRAFFIC CONTROL DEVICES SHALL BE CONSIDERED TO INCLUDE SIGNS AND THEIR MOUNTS, ARROW BOARDS, BARRICADES, PANELS, DRUMS, BARRELS, CONES, LIGHTS, FLAGGERS, SAND BAGS, WEIGHTS, AND ANY OTHER RELATED ITEMS NOT SPECIFICALLY LISTED IN THE SUMMARY OF QUANTITIES.
3. ANY EXISTING PAVEMENT MARKINGS WHICH CONFLICT WITH MARKINGS REQUIRED FOR A GIVEN CONSTRUCTION STAGE SHALL BE REMOVED. ANY PAVEMENT MARKINGS PLACED IN ONE STAGE WHICH CONFLICT WITH THOSE REQUIRED FOR A SUBSEQUENT STAGE SHALL BE REMOVED PRIOR TO THE SUBSEQUENT STAGE.
4. 119TH STREET AND PLAINFIELD-NAPERVILLE ROAD SHALL HAVE A MINIMUM OF ONE LANE OPEN IN EACH DIRECTION DURING NON-WORKING HOURS.
5. ACCESS TO ADJACENT PROPERTIES AND SIDE STREETS SHALL BE MAINTAINED AT ALL TIMES, EXCEPT AS NOTED HEREIN OR PERMITTED BY THE ENGINEER. ANY WORK REQUIRED TO ACCOMPLISH THIS WHICH IS NOT COVERED BY A SPECIFIC PAY ITEM WILL BE INCLUDED IN THE COST OF THE APPLICABLE TRAFFIC CONTROL PAY ITEMS.
6. PERMANENT TRAFFIC SIGNAL WORK MAY PROCEED DURING ANY CONSTRUCTION STAGE IF THAT WORK DOES NOT INTERFERE WITH OTHER WORK REQUIRED IN THAT PARTICULAR STAGE OR SUBSEQUENT STAGES.
7. TEMPORARY PAVEMENT MARKING APPLIED TO FINAL PAVEMENT SURFACES AND EXISTING PAVEMENT SURFACES TO REMAIN SHALL BE PAVEMENT MARKING TAPE, TYPE III.
8. SEE STANDARD 701006 FOR BARRICADE PLACEMENT AND SIGNING.
9. BOTH 119TH STREET AND PLAINFIELD-NAPERVILLE ROAD SPEED LIMITS SHALL BE POSTED AT 35 MPH THROUGHOUT CONSTRUCTION.

PROPOSED LEGEND

1. TEMPORARY PAVEMENT, 8"
2. TYPE II BARRICADE OR DRUM W/STEADY BURN LIGHT
3. 4" WHITE EDGE LINE
4. 2-4" YELLOW @ 11" C-C
5. 4" YELLOW CENTER LINE
6. TRAFFIC CONTROL DEVICE WITH MONODIRECTIONAL STEADY BURNING LIGHT AT 50' C-C



FILE NAME = P:\070116\cad\phase 2\dwg\070116-shl-staging-typesections-Plain.dgn	USER NAME = #USER#	DESIGNED - CM	REVISED -	<b>STATE OF ILLINOIS DEPARTMENT OF TRANSPORTATION</b>	<b>HLR</b>	<b>STAGING TYPICAL SECTIONS - PLAINFIELD NAPERVILLE RD</b>		F.A.U. RTE. = 324	SECTION = 04-00036-22-TL	COUNTY = WILL	TOTAL SHEETS = 152	SHEET NO. = 26	
PLOT SCALE = #SCALE#	CHHECKED - CM	REVISER -	REVISIONS -			SCALE: 1" = 20'	SHEET NO. 1 OF 1 SHEETS	STA. TO STA.	CONTRACT NO. 63671				
PLOT DATE = 1/5/2012	DATE = FEBRUARY 2009	REVISER -	REVISIONS -			ILLINOIS FED. AID PROJECT							