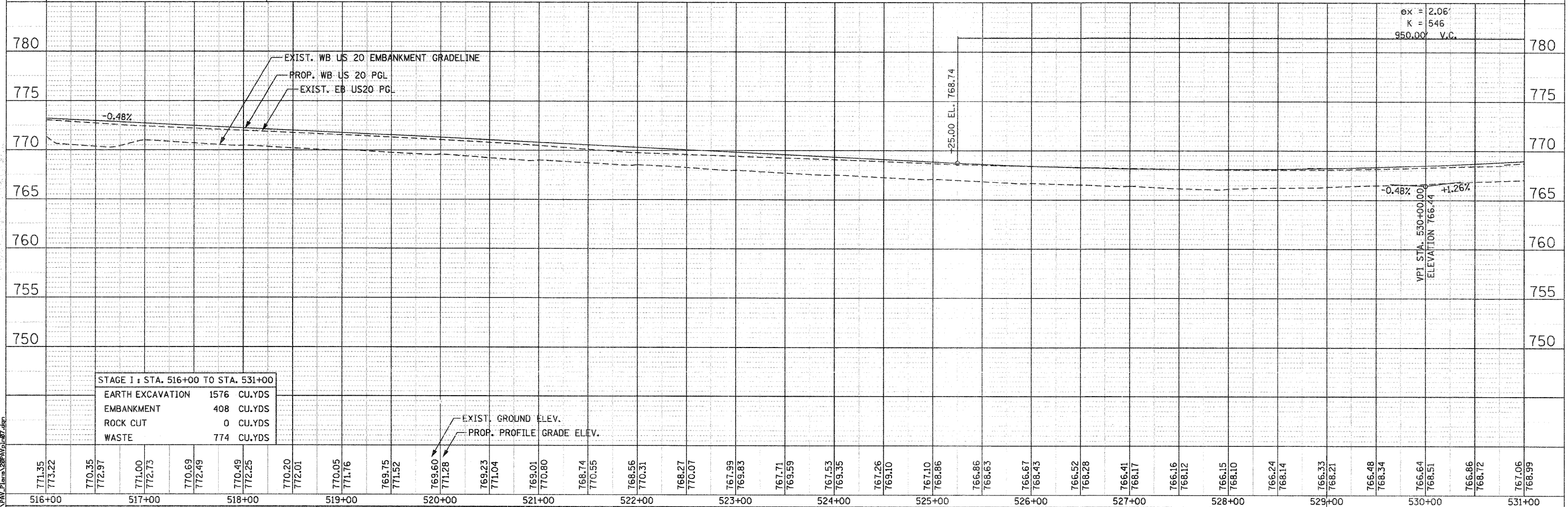
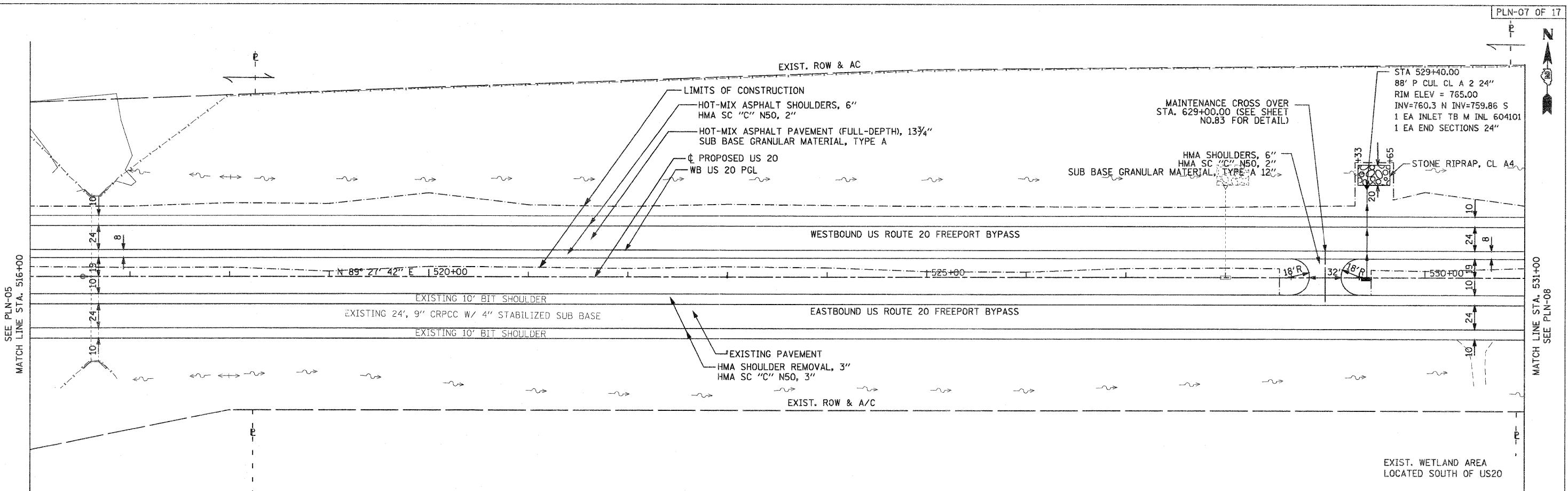


PLAN	SURVEYED	DATE
	PLOTTED	
	CHECKED	
	BY	
	NO. OF WAYS CHECKED	
	DATE	
	FILE NAME	
	NO.	

PROFILE	SURVEYED	DATE
	PLOTTED	
	CHECKED	
	BY	
	NO. OF WAYS CHECKED	
	DATE	
	FILE NAME	
	NO.	



STAGE I : STA. 516+00 TO STA. 531+00	
EARTH EXCAVATION	1576 CU.YDS
EMBANKMENT	408 CU.YDS
ROCK CUT	0 CU.YDS
WASTE	774 CU.YDS

**PARSONS BRINCKERHOFF**  
 280 West Monroe St., Suite 900  
 Chicago, IL 60604, (312) 783-6160

USER NAME = MMS	DESIGNED - MMS	REVISED -
PLOT SCALE = 3/8" = 1' / IN.	DRAWN - MMS	REVISED -
PLOT DATE = 9/28/11	CHECKED - RMH	REVISED -
	DATE - 12/02/2011	REVISED -

**STATE OF ILLINOIS**  
**DEPARTMENT OF TRANSPORTATION**

PLAN AND PROFILE  
 WESTBOUND U.S. ROUTE 20  
 SCALE: 1"=50'  
 SHEET NO. 7 OF 17 SHEETS  
 STA. 516+00 TO STA. 531+00

F.A. RTE. 301	SECTION 177-2-1	COUNTY STEPHENSON	TOTAL SHEETS 211	SHEET NO. 44
FINAL SUBMITTAL		CONTRACT NO. 64860		
ILLINOIS FED. AID PROJECT P-92-014-03				

T:\BIB\44\1\PAV\Plan\208\PA07.dwg