

PLAN	SURVEYED	BY	DATE
	PLOTTED		
	CHECKED		
	REVISIONS		
	NO. OF SHEETS		
	NO. OF PAGES		
	FILE NAME		

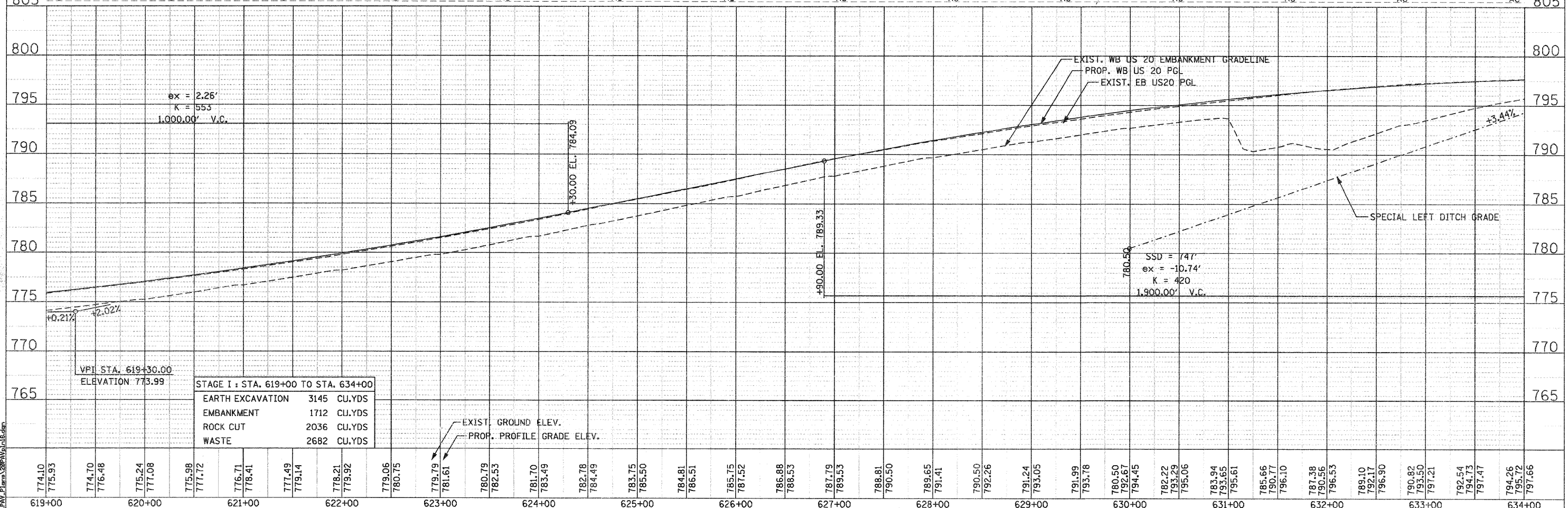
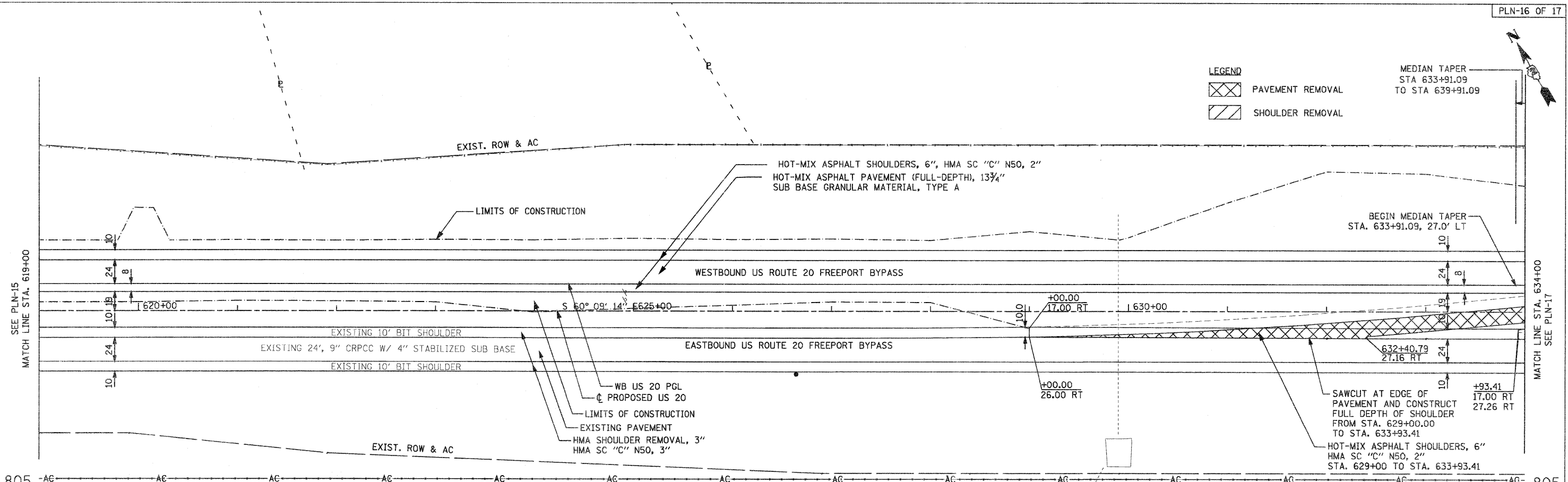
PROFILE	SURVEYED	BY	DATE
	PLOTTED		
	CHECKED		
	REVISIONS		
	NO. OF SHEETS		
	NO. OF PAGES		
	FILE NAME		

LEGEND

PAVEMENT REMOVAL

SHOULDER REMOVAL

MEDIAN TAPER
STA 633+91.09
TO STA 639+91.09



STAGE I : STA. 619+00 TO STA. 634+00

EARTH EXCAVATION	3145	CU.YDS
EMBANKMENT	1712	CU.YDS
ROCK CUT	2036	CU.YDS
WASTE	2682	CU.YDS

T:\18844\PLAN\PLAN16.DWG

PARSONS BRINCKERHOFF
280 West Monroe St. Suite 800
Chicago, IL 60604 (312) 782-6160

USER NAME = MMS	DESIGNED - MMS	REVISED -
PLOT SCALE = 50.00' / IN.	DRAWN - MMS	REVISED -
PLOT DATE = 9/28/11	CHECKED - RMH	REVISED -
	DATE - 12/02/2011	REVISED -

STATE OF ILLINOIS
DEPARTMENT OF TRANSPORTATION

PLAN AND PROFILE
WESTBOUND U.S. ROUTE 20

SCALE: 1"=50' SHEET NO. 16 OF 17 SHEETS STA. 619+00 TO STA. 634+00

F.A. RTE.	SECTION	COUNTY	TOTAL SHEETS	SHEET NO.
301	177-2-1	STEPHENSON	211	53
FINAL SUBMITTAL			CONTRACT NO. 64860	
ILLINOIS FED. AID PROJECT P-92-014-03				