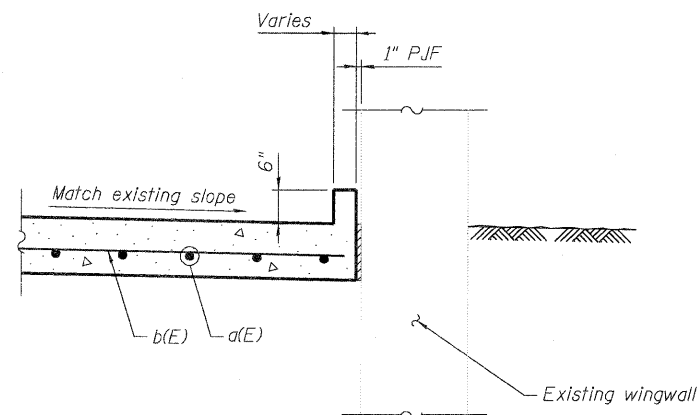
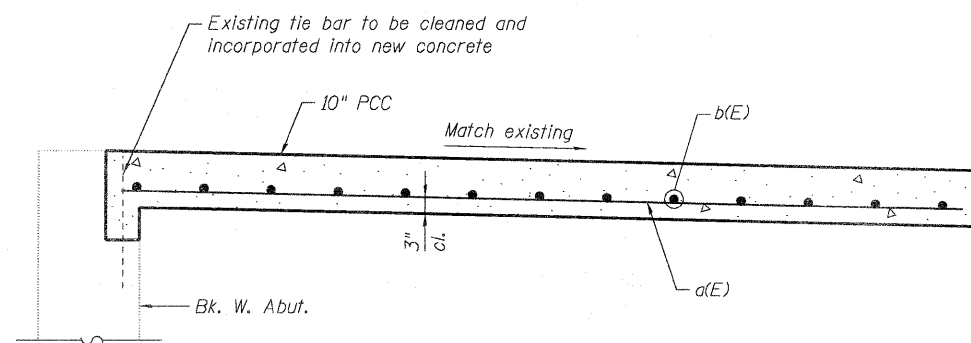


SECTION A-A



SECTION C-C



SECTION B-B

BILL OF MATERIAL

Bar	No.	Size	Length	Shape
a(E)	73	#5	9'-8"	—
b(E)	17	#5	18'-1"	—
b ₁ (E)	17	#5	23'-4"	—
d(E)	16	#5	2'-0"	—
Approach Slab Removal			Sq. Yd.	39
P.C. Concrete Bridge				
Approach Shoulder			Sq. Yd.	39
Pavement				

Note:
Reinforcement bars are shown for information only.

T:\16814A\Struct\Cadd\Approaches repair\US20_RIVBR_app-02-pl.dgn 17-FEB-2012 11:35

PB Americas, Inc.
230 WEST MONROE STREET,
SUITE 900
CHICAGO, IL 60606
(312)782-8150

FILE NAME = US20_RIVBR_app-02-pl.dgn
PLOT SCALE = NONE
PLOT DATE = 2/17/2012

DESIGNED - J. Muhammad
CHECKED - M. Shaikh
DRAWN - D. C. Patel
CHECKED - J. Gralnowl

REVISED -
REVISED -
REVISED -
REVISED -

**STATE OF ILLINOIS
DEPARTMENT OF TRANSPORTATION**

**BRIDGE APPROACH PAVEMENT
(DRAIN DETAIL)**

SHEET NO. 2 OF 2 SHEETS

F.A.P. RTE.	SECTION	COUNTY	TOTAL SHEETS	SHEET NO.
301	177-2-1	STEPHENSON	211	104C
CONTRACT NO. 64860				

ILLINOIS FED. AID PROJECT

Added 2-22-12