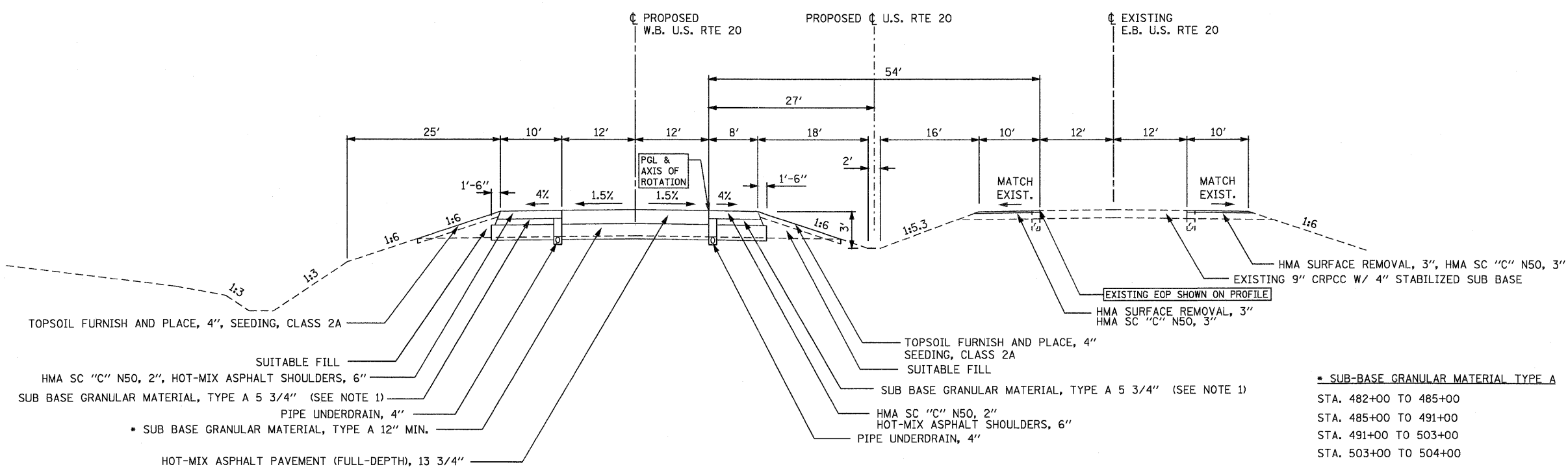


U.S. ROUTE 20 MAINLINE TYPICAL SECTION
 NORMAL
 STA. 472+67.58 TO STA. 477+00.00 US 20
 STA. 72+63.90 TO STA. 77+00.00 US 20 CROSS OVER



U.S. ROUTE 20 MAINLINE TYPICAL SECTION
 (NORMAL)
 STA. 477+00.00 TO STA. 534+75.00
 STA. 559+00.00 TO STA. 569+13.84
 STA. 570+60.93 TO STA. 576+25.00
 STA. 598+89.24 TO STA. 629+00.00

SUB-BASE GRANULAR MATERIAL TYPE A	DEPTH
STA. 482+00 TO 485+00	24"
STA. 485+00 TO 491+00	18"
STA. 491+00 TO 503+00	30"
STA. 503+00 TO 504+00	18"
STA. 520+00 TO 521+50	24"

THE TABLE SHOWN ABOVE INDICATES WHERE SUBBASE IS GREATER THAN 12"

BRIDGE OMMISION
 STA. 536+87.27 TO STA. 544+44.15
 STA. 569+17.27 TO STA. 570+61.77

BRIDGE APPROACH PAVEMENT
 FROM STA. 536+57.27 TO STA. 536+87.27
 FROM STA. 544+44.15 TO STA. 544+74.15
 FROM STA. 568+87.27 TO STA. 569+17.27
 FROM STA. 570+61.77 TO STA. 570+91.77

NOTE:
 FOR APPROACH PAVEMENT SEE
 APPROACH PAVEMENT DETAILS SHEETS
 FROM SHEET NO. 95 TO SHEET NO. 105.

NOTE:
 1. CA 06 OR 10 - (THE COST INCLUDED IN THE HMA SHOULDER)

PARSONS BRINCKERHOFF
 230 West Monroe St., Suite 900
 Chicago, IL 60606, (312) 782-8180

USER NAME = MMS	DESIGNED - MMS	REVISED -
PLOT SCALE = 1/8" = 1' / IN.	DRAWN - MMS	REVISED -
PLOT DATE = 9/28/11	CHECKED - RMH	REVISED -
	DATE -	REVISED -

STATE OF ILLINOIS
DEPARTMENT OF TRANSPORTATION

SCALE: NONE	SHEET NO. 2 OF 5 SHEETS	STA. TO STA.
-------------	-------------------------	--------------

F.A. RTE.	SECTION	COUNTY	TOTAL SHEETS	SHEET NO.
301	177-2-1	STEPHENSON	211	11
FINAL SUBMITTAL			CONTRACT NO. 64860	
ILLINOIS FED. AID PROJECT P-92-014-03				