
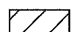

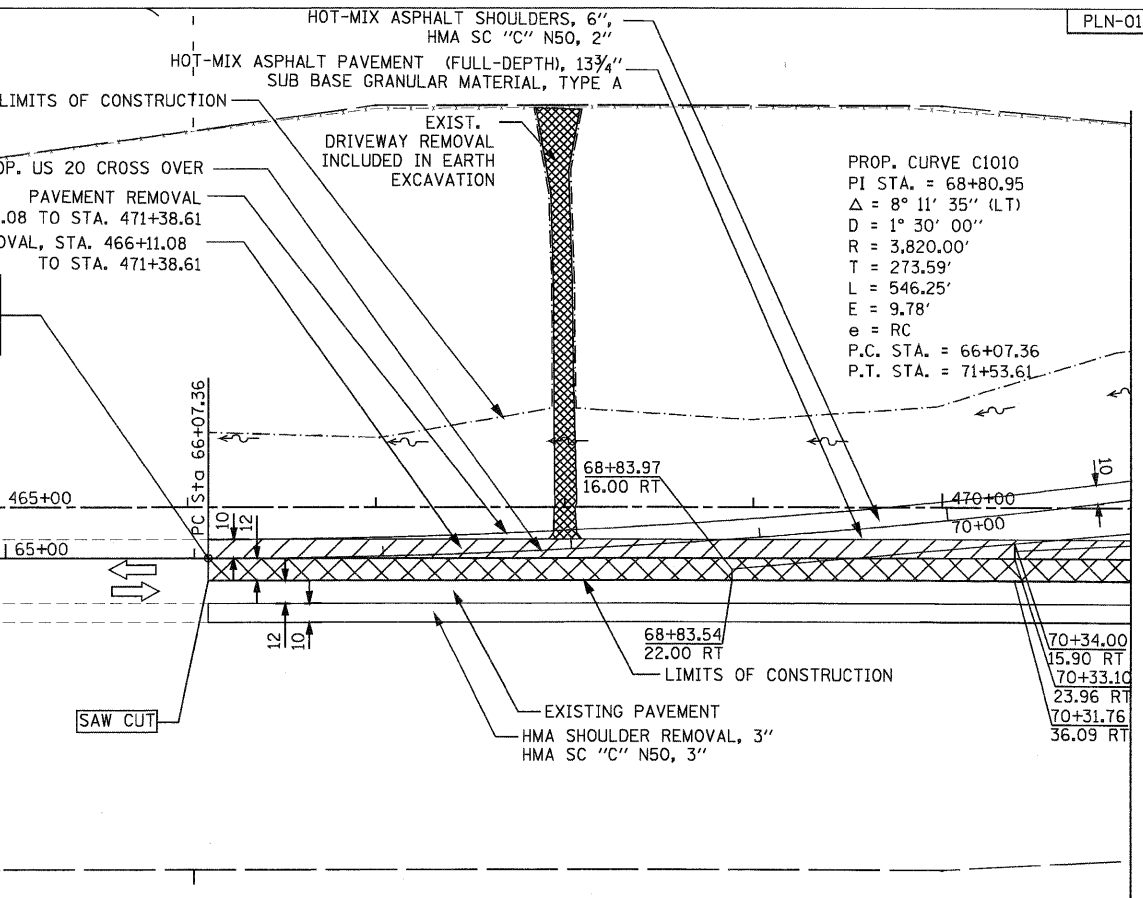


LEGEND

-  PAVEMENT REMOVAL
-  SHOULDER REMOVAL
-  DRIVEWAY REMOVAL

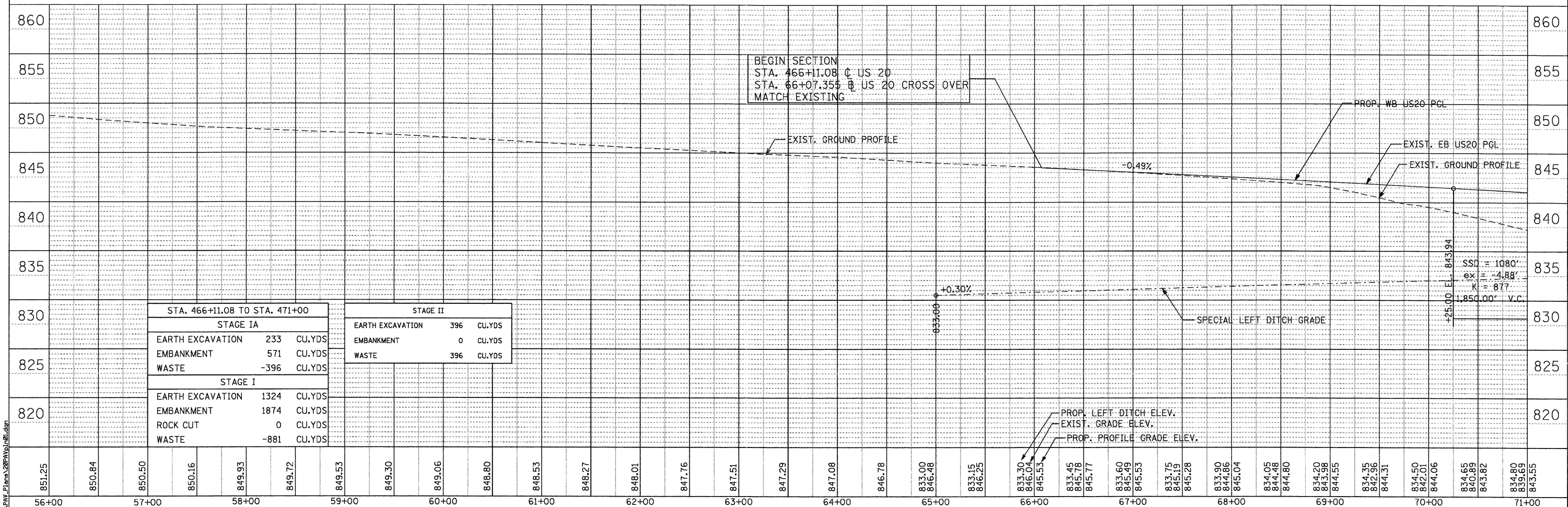


PROP. CURVE C1010  
 PI STA. = 68+80.95  
 $\Delta = 8^\circ 11' 35''$  (LT)  
 $D = 1^\circ 30' 00''$   
 $R = 3,820.00'$   
 $T = 273.59'$   
 $L = 546.25'$   
 $E = 9.78'$   
 $e = RC$   
 P.C. STA. = 66+07.36  
 P.T. STA. = 71+53.61

BEGIN SECTION  
 STA 466+11.08 @ US 20  
 STA 66+07.355 @ US 20 CROSS OVER

PLAN	SURVEYED	DATE
	PLOTTED	
	ALIGNED	
	CHECKED	
	FILED	
	NO.	

PROFILE	SURVEYED	DATE
	PLOTTED	
	GRADES	
	CHECKED	
	STRUCTURE	
	NOTATIONS	
	CRKD	
	NO.	



**PARSONS BRINCKERHOFF**  
 380 West Monroe St, Suite 900  
 Chicago, IL 60606, (312) 782-8160

USER NAME = MMS	DESIGNED - MMS	REVISED -
PLOT SCALE = 50.00' / IN.	DRAWN - MMS	REVISED -
PLOT DATE = 9/28/11	CHECKED - RMH	REVISED -
	DATE - 12/02/2011	REVISED -

STATE OF ILLINOIS  
 DEPARTMENT OF TRANSPORTATION

PLAN AND PROFILE  
 WESTBOUND U.S. ROUTE 20  
 SCALE: 1"=50' SHEET NO. 1 OF 17 SHEETS STA. 457+69 TO STA. 471+00

F.A. RTE. 301	SECTION 177-2-1	COUNTY STEPHENSON	TOTAL SHEETS 211	SHEET NO. 38
FINAL SUBMITTAL		CONTRACT NO. 64860		
[ILLINOIS] FED. AID PROJECT P-92-014-03				