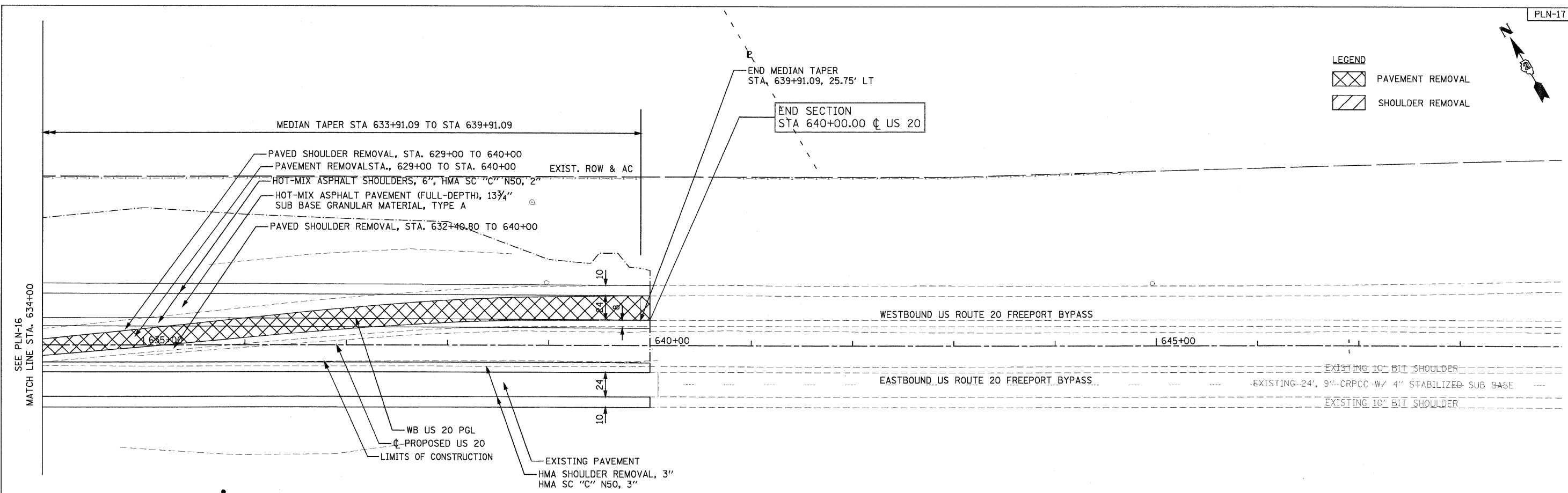


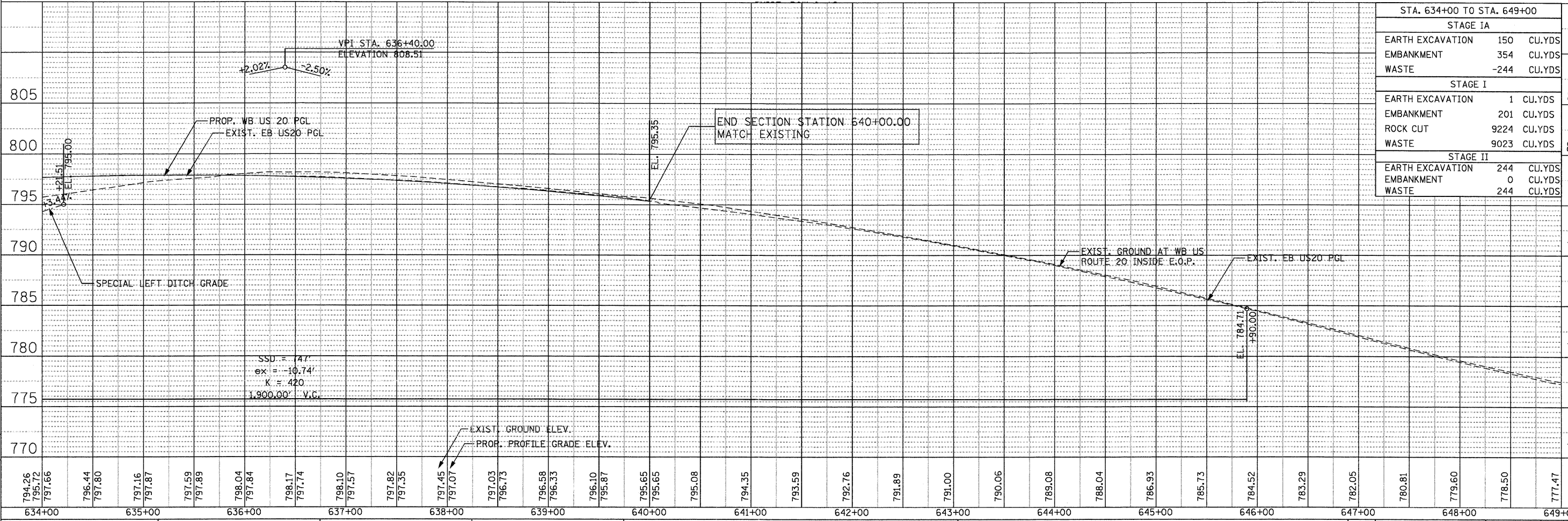
**LEGEND**

	PAVEMENT REMOVAL
	SHOULDER REMOVAL

DATE	
BY	
REVISIONS	
NO.	
DESCRIPTION	
DATE	
BY	
REVISIONS	
NO.	
DESCRIPTION	
DATE	
BY	
REVISIONS	
NO.	
DESCRIPTION	



DATE	
BY	
REVISIONS	
NO.	
DESCRIPTION	
DATE	
BY	
REVISIONS	
NO.	
DESCRIPTION	
DATE	
BY	
REVISIONS	
NO.	
DESCRIPTION	



STA. 634+00 TO STA. 649+00	
STAGE IA	
EARTH EXCAVATION	150 CU.YDS
EMBANKMENT	354 CU.YDS
WASTE	-244 CU.YDS
STAGE I	
EARTH EXCAVATION	1 CU.YDS
EMBANKMENT	201 CU.YDS
ROCK CUT	9224 CU.YDS
WASTE	9023 CU.YDS
STAGE II	
EARTH EXCAVATION	244 CU.YDS
EMBANKMENT	0 CU.YDS
WASTE	244 CU.YDS

**PARSONS BRINCKERHOFF**  
 230 West Monroe St, Suite 900  
 Chicago, IL 60606, (312) 782-8150

USER NAME = MMS	DESIGNED - MMS	REVISED -
PLOT SCALE = 5/8" = 1' IN.	DRAWN - MMS	REVISED -
PLOT DATE = 9/28/11	CHECKED - RMH	REVISED -
	DATE - 12/02/2011	REVISED -

**STATE OF ILLINOIS  
 DEPARTMENT OF TRANSPORTATION**

PLAN AND PROFILE  
 WESTBOUND U.S. ROUTE 20

SCALE: 1"=50'    SHEET NO. 17 OF 17 SHEETS    STA. 634+00 TO STA. 649+00

F.A. RTE. 301	SECTION 177-2-1	COUNTY STEPHENSON	TOTAL SHEETS 211	SHEET NO. 54
FINAL SUBMITTAL			CONTRACT NO. 64860	
ILLINOIS FED. AID PROJECT P-92-014-03				