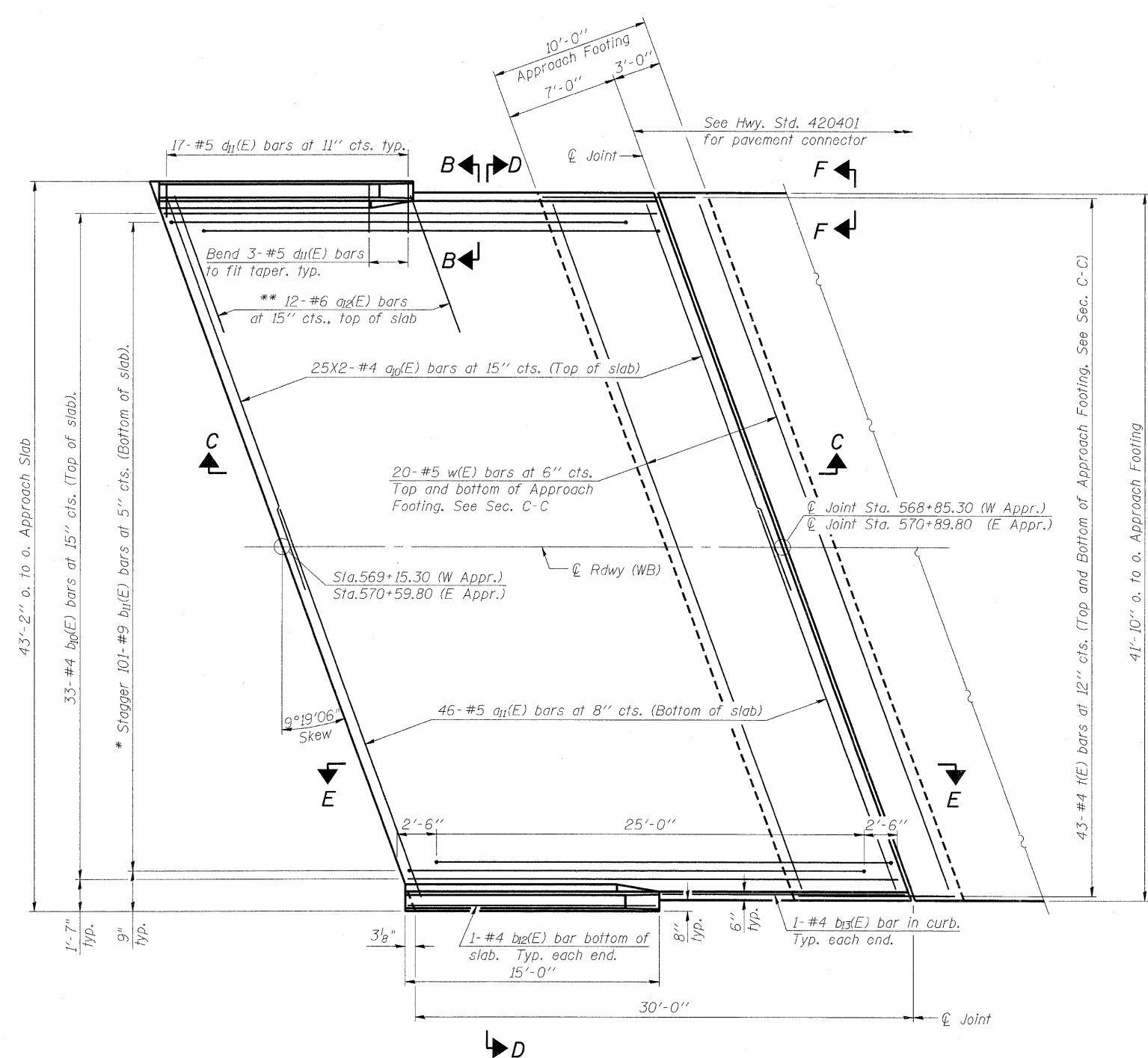


STATE OF ILLINOIS
DEPARTMENT OF TRANSPORTATION

ROUTE NO.	SECTION	COUNTY	TOTAL SHEETS	SHEET NO.	SHEET NO. 9 24 SHEETS
FAP 301	177-2	STEPHENSON	211	103	
FED. ROAD DIST. NO. 7	ILLINOIS	FED. AID PROJECT			

Contract No. _____

Notes:
 * See sheet 10 of 24 for Sections C-C & D-D and View E-E.
 $a_{10}(E)$ and $a_{11}(E)$ bar spacings measured along CL Rdwy.
 See sheet 11 of 24 for bridge approach pavement drain location and Standard 609006 for drain details. See roadway plans for quantities.
 Bars thus indicate 25X2-#4 bars etc. indicates 25 lines of bars with 2 lengths per line.
 Field cut reinforcement to clear approach pavement drains.
 * Sheet No. 15 in reference to Contract 64799

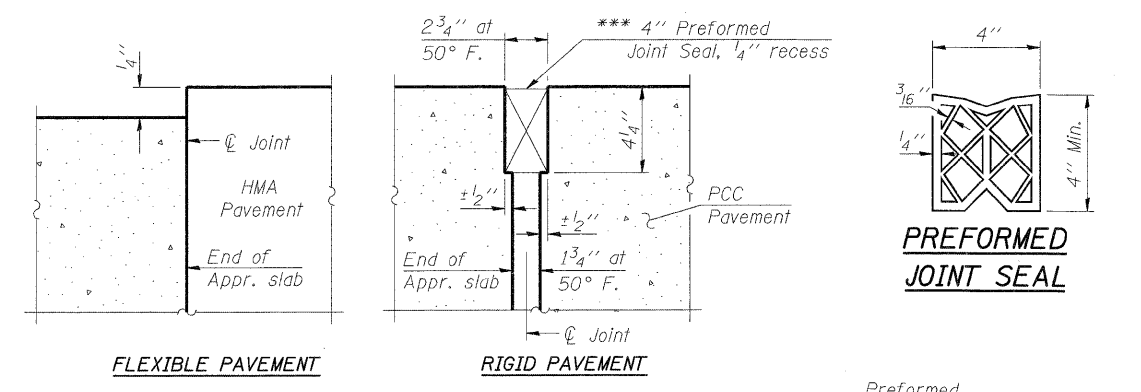


PLAN

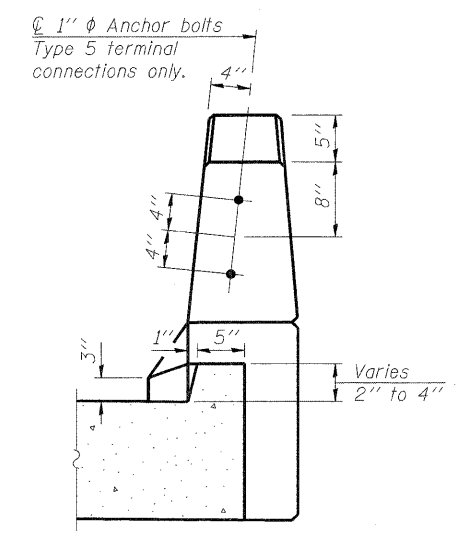
* Tilt #9 $b_{11}(E)$ bars as required to maintain clearance.
 ** Space between $a_{10}(E)$ bars, typ. each parapet.

MINIMUM BAR LAP
 #4 Bars = 1'-8"

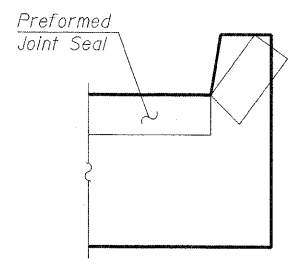
*** Cost included with Concrete Superstructure.



DETAIL A



VIEW B-B



VIEW F-F

Angle Preformed Joint Seal at 45° at curbs when req'd for drainage.

DESIGNED	H. ALKHATIB
CHECKED	S. CHELBIAN
DRAWN	D. C. PATEL
CHECKED	J. GRAINAWI

BA-R 11-1-09

PARSONS BRINCKERHOFF
 280 West Monroe St.
 Suite 900
 Chicago, IL 60606
 (312) 782-8150

**BRIDGE APPROACH SLAB
 DETAILS I**
 F.A.P. ROUTE 301 SECTION 177-2VB-1
 STEPHENSON COUNTY
 STATION 569+87.29
 STRUCTURE NO. 089-0083
 CONTRACT 64860

T:\16814\Struct\Cadd\PreFinal\US20 Bridge 089-0083 (Jane Adams Trail Bridge)\000000-64799-000-000-009.dgn
 05-DEC-2011 13:17