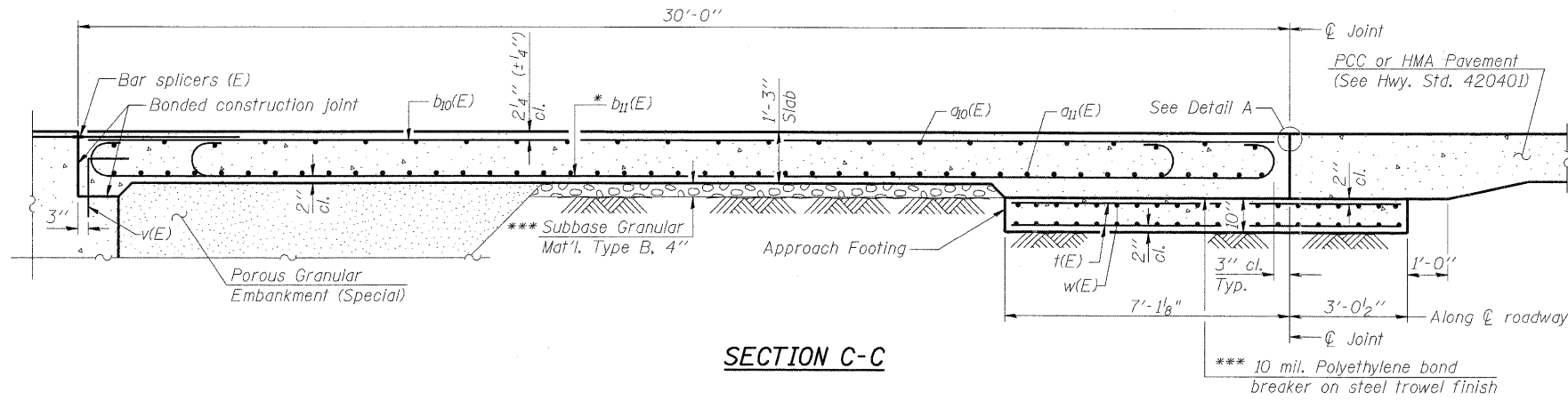


STATE OF ILLINOIS
DEPARTMENT OF TRANSPORTATION

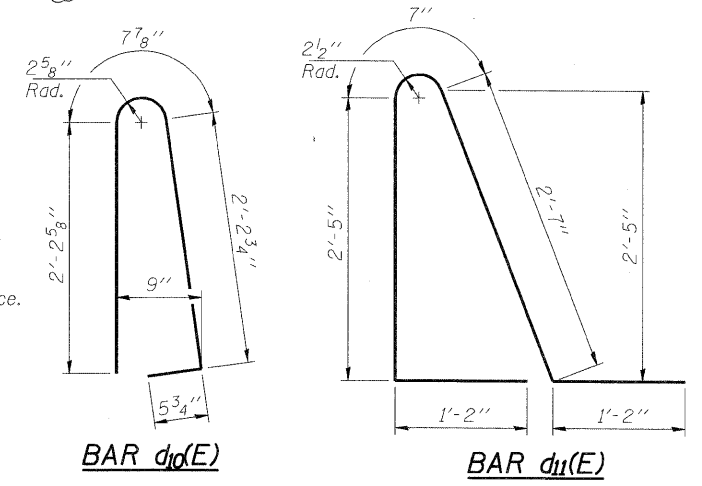
ROUTE NO.	SECTION	COUNTY	TOTAL SHEETS	SHEET NO.
FAP 301	177-2	STEPHENSON	211	104
FED. ROAD DIST. NO. 7	ILLINOIS	FED. AID PROJECT		

SHEET NO. 10
24 SHEETS

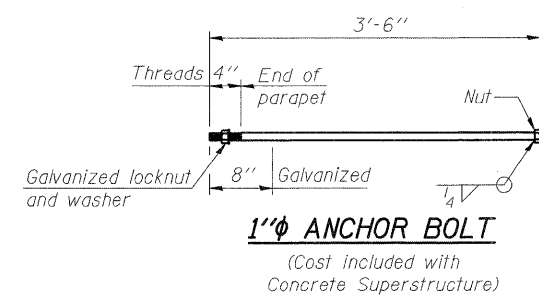
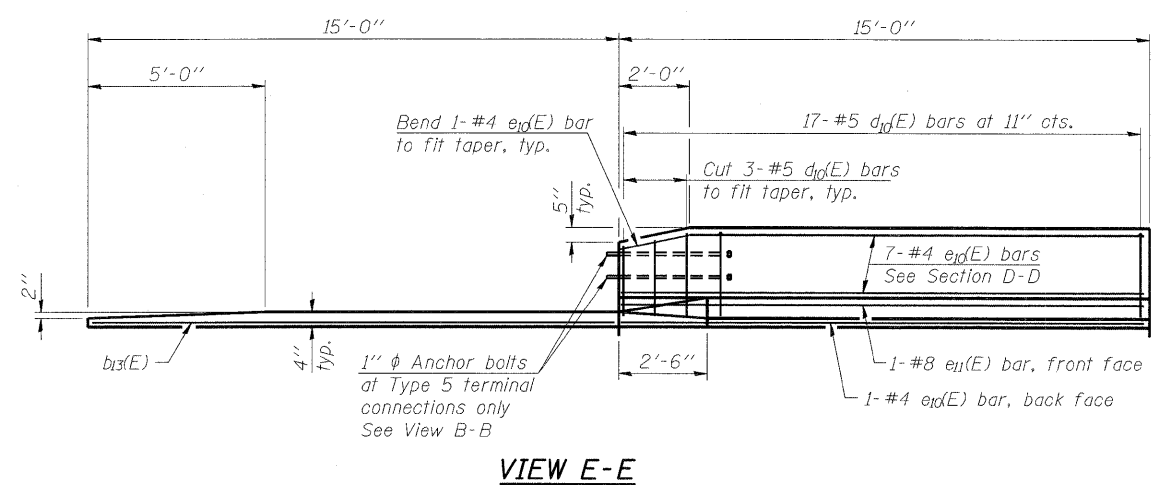
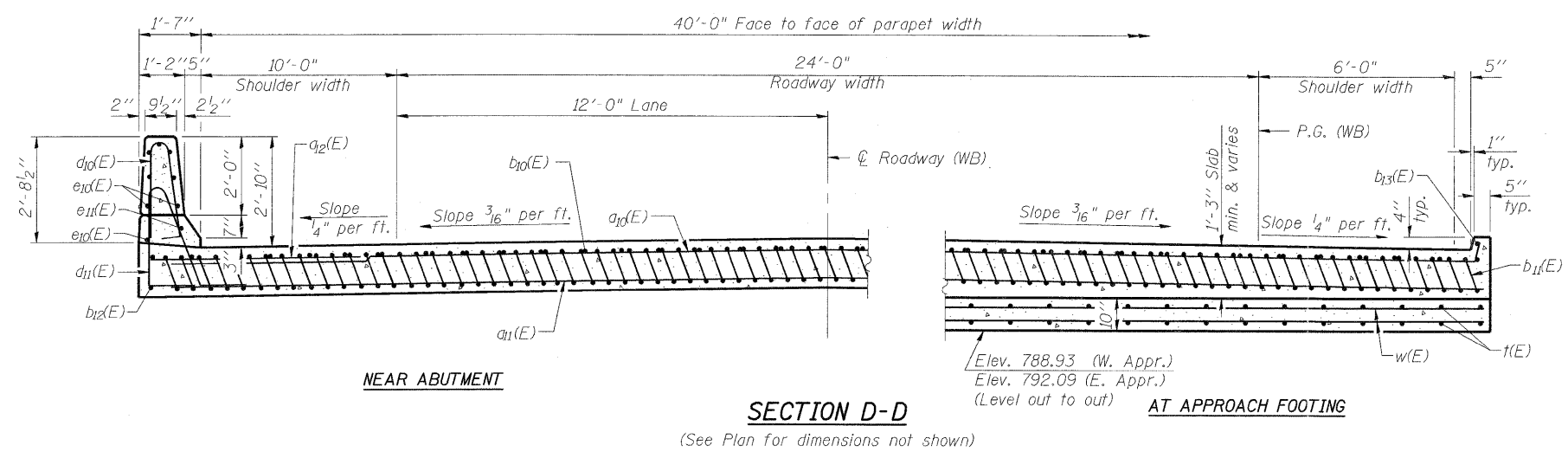
Contract No. 089-0083



Notes:
See sheet 9 of 24 for Detail A and View B-B.
Approach slab and parapet concrete shall be paid for as Concrete Superstructure.
Approach footing concrete shall be paid for as Concrete Structures.
Reinforcement shall be paid for as Reinforcement Bars, Epoxy Coated.
For $v(E)$ bar details, see sheet 11 of 24.
The approach footing maximum applied service bearing pressure (Q_{max}) = 2.0 ksf.
For bar splicer details, see sheet 20 of 24.
Cost of excavation for approach footing included with Concrete Structures.
For Porous Granular Embankment (Special) and drainage treatment details, see sheet 2 of 24.
*Sheet No. 15 is in reference to Contract 64799



* Tilt #9 $b_{11}(E)$ bars as required to maintain clearance.
*** Cost included with Concrete Superstructure.

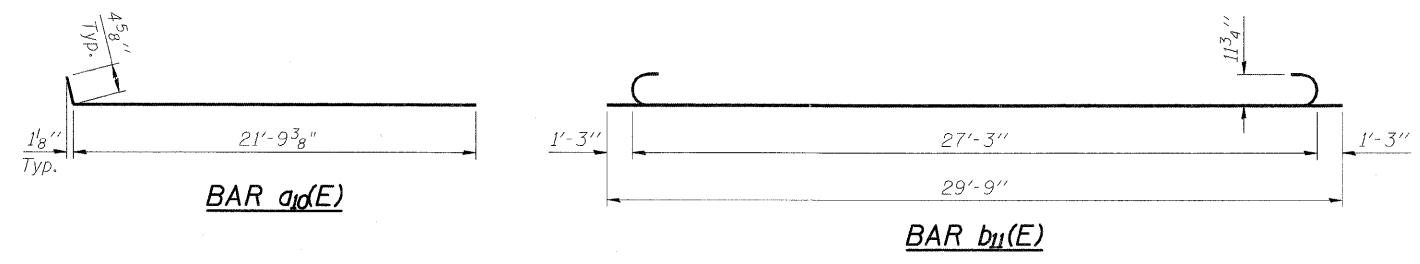


TWO APPROACHES
BILL OF MATERIAL

Bar	No.	Size	Length	Shape
$a_{10}(E)$	100	#4	22'-2"	—
$a_{11}(E)$	92	#5	42'-1"	—
$a_{12}(E)$	48	#6	6'-6"	—
$b_{10}(E)$	66	#4	29'-8"	—
$b_{11}(E)$	202	#9	29'-9"	—
$b_{12}(E)$	4	#4	14'-8"	—
$b_{13}(E)$	4	#4	14'-10"	—
$d_{10}(E)$	68	#5	5'-7"	—
$d_{11}(E)$	68	#5	7'-11"	—
$e_{10}(E)$	32	#4	14'-8"	—
$e_{11}(E)$	4	#8	14'-8"	—
$t(E)$	172	#4	9'-10"	—
$w(E)$	80	#5	42'-1"	—
Bridge Deck Grooving		Sq. Yd.	257	
Protective Coat		Sq. Yd.	301	
Concrete Superstructure		Cu. Yd.	132.8	
Concrete Structures		Cu. Yd.	26.2	
Reinforcement Bars, Epoxy Coated		Pound	33880	

DESIGNED	H. ALKHATIB
CHECKED	S. CHELBIAN
DRAWN	D. C. PATEL
CHECKED	J. GRAINAWI

BA-R 11-1-09



BRIDGE APPROACH SLAB
DETAILS II
F.A.P. ROUTE 301 SECTION 177-2VB-1
STEPHENSON COUNTY
STATION 569+87.29
STRUCTURE NO. 089-0083
CONTRACT 08900

PARSONS
BRINCKERHOFF
280 West Monroe St.
Suite 900
Chicago, IL 60606
(312) 782-8150