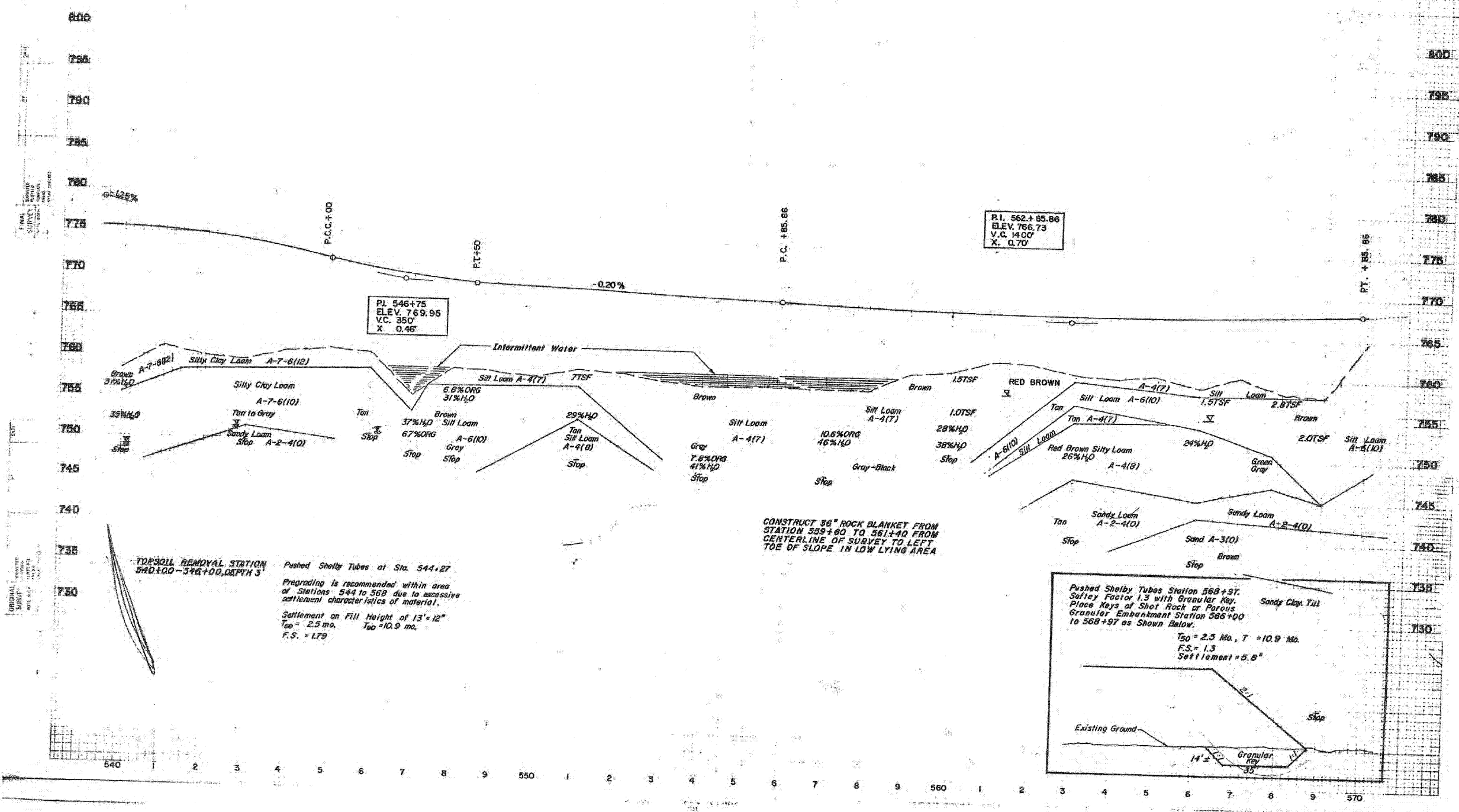


ROUTE NO.	SECTION	COUNTY	TOTAL SHEETS	SHEET NO.
PA 401 177-2	STEPHENSON		211	112
STA. 540+00			TOTAL 570+00	
FED. ROAD DIST. NO. 7	ILLINOIS	PROJECT		



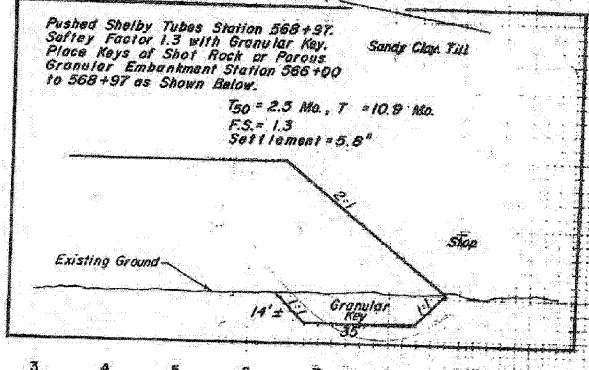
TOPSOIL REMOVAL STATION
 STA. 544+00 - 546+00, DEPTH 3'

Pushed Shelby Tubes at Sta. 544+27

Pregrading is recommended within area of Stations 544 to 549 due to excessive settlement characteristics of material.

Settlement on Fill Height of 13'-12"
 $T_{50} = 2.3$ mo., $T_{100} = 10.9$ mo.
 F.S. = 1.79

CONSTRUCT 36" ROCK BLANKET FROM STATION 559+60 TO 561+60 FROM CENTERLINE OF SURVEY TO LEFT TOE OF SLOPE IN LOW LYING AREA



NOTE:
 GEOTECHNICAL INVESTIGATION AND
 SOILS INFORMATION PER IDOT

PARSONS BRINCKERHOFF
 280 West Monroe St. Suite 900
 Chicago, IL 60606, (312) 782-8160

USER NAME = MMS	DESIGNED - MMS	REVISED -
PLOT SCALE = 50.00' / IN.	DRAWN - MMS	REVISED -
PLOT DATE = 9/28/11	CHECKED - RMH	REVISED -
	DATE - 12/02/2011	REVISED -

STATE OF ILLINOIS
 DEPARTMENT OF TRANSPORTATION

SCALE: NONE		SHEET NO. OF SHEETS STA. TO STA.	
SOIL PROFILES			

F.A. RTE.	SECTION	COUNTY	TOTAL SHEETS	SHEET NO.
301	177-2-1	STEPHENSON	211	112
FINAL SUBMITTAL		CONTRACT NO. 64860		
ILLINOIS FED. AID PROJECT P-92-014-03				