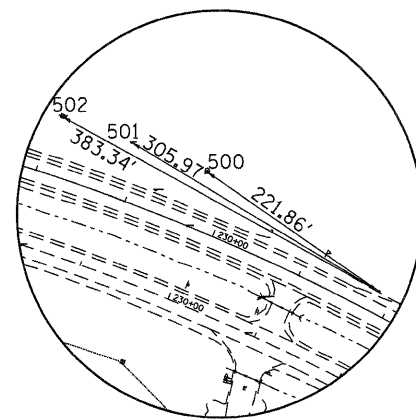
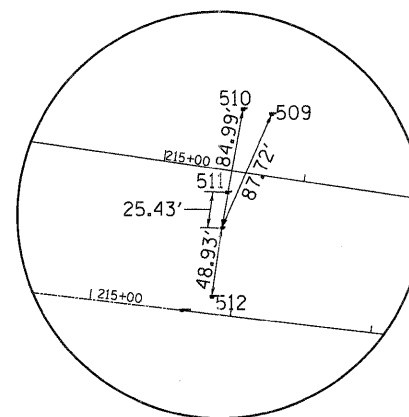


SURVEY WORK POINTS							
POINT	NORTH	EAST	ELEVATION	CHAIN	STATION	OFFSET	DESCRIPTION
108	2112169.4690	2184576.6420	613.2135	WBUS20	231+83.43	23.2813' LT	PIN, SET PIN FOR CONTROL
109	2112469.4570	2182973.6320	640.5898	WBUS20	215+47.03	40.8149' RT	DISK, CONCRETE
110	2112290.4710	2183791.7720	615.0683	EBUS20	224+20.55	20.9356' RT	CONCRETE, SET PIN FOR CONTROL

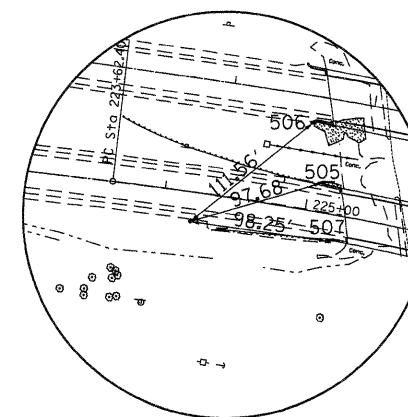
REFERENCE TIES					
POINT	CHAIN	STATION	OFFSET	DESCRIPTION	
500	WBUS20	229+68.64	60.9916' LT	SHINER, TREE DECIDUOUS	
501	WBUS20	228+85.01	60.9061' LT	SHINER, FENCE POST	
502	WBUS20	228+08.62	62.3944' LT	SHINER, POWER POLE	
505	EBUS20	225+08.83	20.9153' LT	CROSS CUT, HUB GUARD	
506	WBUS20	224+58.99	18.532' RT	CROSS CUT, HUB GUARD	
507	EBUS20	225+19.63	19.0917' RT	CROSS CUT, HUB GUARD	
509	WBUS20	215+70.47	43.7189' LT	SHINER, TREE DECIDUOUS	
510	WBUS20	215+49.92	44.1271' LT	SHINER, TREE DECIDUOUS	
511	WBUS20	215+47.20	15.3815' RT	SHINER, PAVEMENT - EDGE	
512	EBUS20	215+85.38	11.9752' LT	SHINER, PAVEMENT - EDGE	



HORIZONTAL CONTROL POINT NO. 108



HORIZONTAL CONTROL POINT NO. 109



HORIZONTAL CONTROL POINT NO. 110

NOTE: SURVEY DATA PROVIDED BY THE ILLINOIS DEPARTMENT OF TRANSPORTATION.