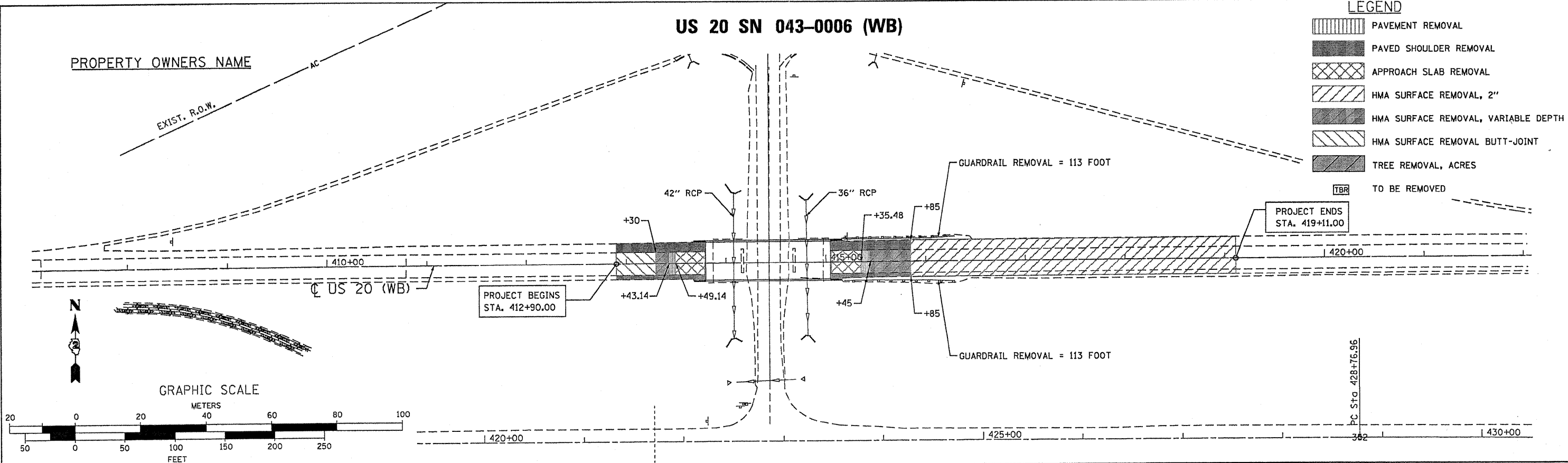


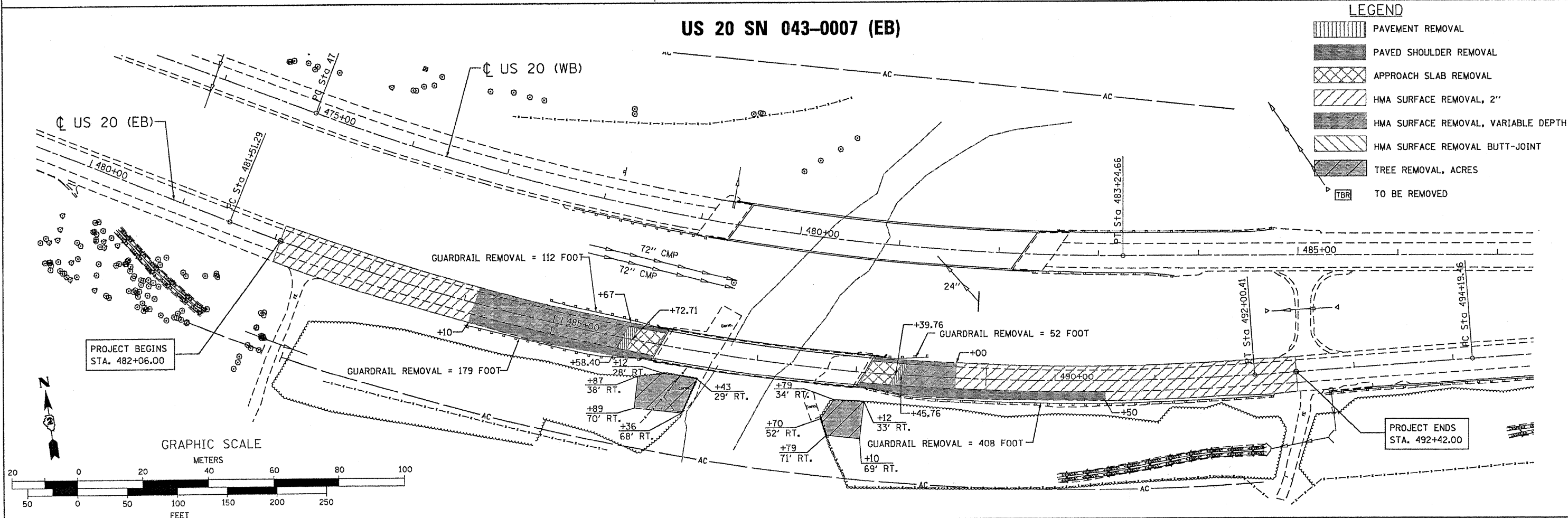
**US 20 SN 043-0006 (WB)**



**LEGEND**

- PAVEMENT REMOVAL
- PAVED SHOULDER REMOVAL
- APPROACH SLAB REMOVAL
- HMA SURFACE REMOVAL, 2"
- HMA SURFACE REMOVAL, VARIABLE DEPTH
- HMA SURFACE REMOVAL BUTT-JOINT
- TREE REMOVAL, ACRES
- TO BE REMOVED

**US 20 SN 043-0007 (EB)**



**LEGEND**

- PAVEMENT REMOVAL
- PAVED SHOULDER REMOVAL
- APPROACH SLAB REMOVAL
- HMA SURFACE REMOVAL, 2"
- HMA SURFACE REMOVAL, VARIABLE DEPTH
- HMA SURFACE REMOVAL BUTT-JOINT
- TREE REMOVAL, ACRES
- TO BE REMOVED

USER NAME = g.jameson	DESIGNED -	REVISED -
FILE NAME = Z83287REMOVAL-SHT	CHECKED -	REVISED -
PLOT DATE = 12/1/2011	DRAWN -	REVISED -
PLOT TIME = 10:11:11 AM	CHECKED -	REVISED -

**WHKS & CO.**  
ENGINEERING

1701 ROUTE 35 NORTH  
EAST DUBUQUE, IL 61025  
(815) 747-8833  
DESIGN FIRM #184001036

**STATE OF ILLINOIS**  
**DEPARTMENT OF TRANSPORTATION**

**US 20**  
**REMOVAL PLAN**

SCALE: 1"=50'    SHEET NO. 2 OF 2 SHEETS    STA.    TO STA.

F.A.P. RTE. 301	SECTION (43B,44B,44HB,45BD)	COUNTY JO DAVIESS	TOTAL SHEETS 309	SHEET NO. 49
CONTRACT NO. 64C94				ILLINOIS FED. AID PROJECT