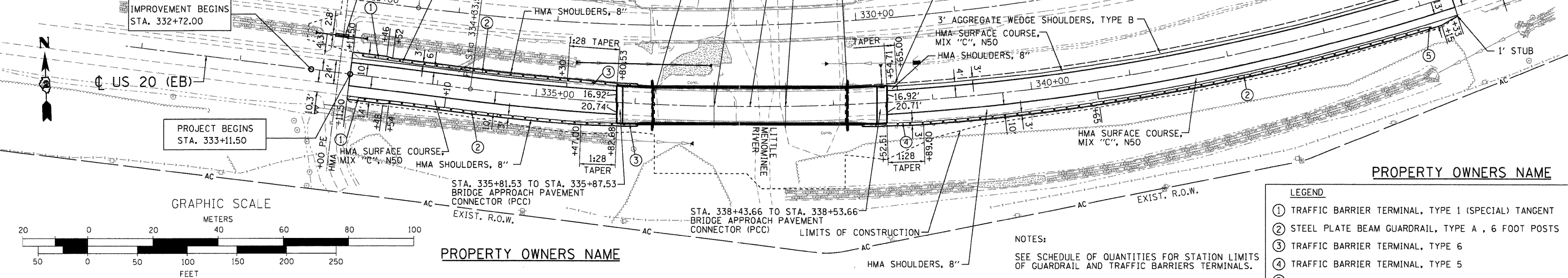


EXIST. CURVE 290
 PI STA. = 340+79.36
 $\Delta = 31^\circ 29' 55''$ (LT)
 $D = 2^\circ 30' 08''$
 $R = 2,289.84'$
 $T = 645.77'$
 $L = 1,258.85'$
 $E = 89.32'$
 $e = 4.5\%$
 T.R. =
 S.E. RUN =
 P.C. STA. = 334+33.59
 P.T. STA. = 346+92.44

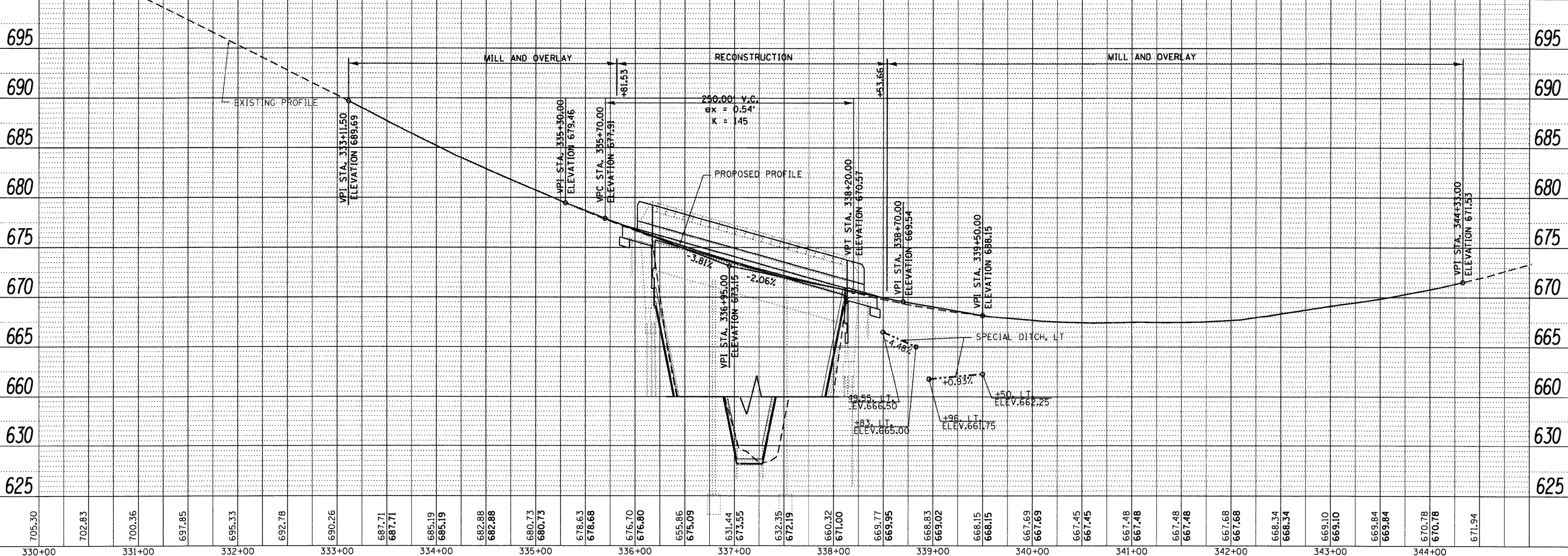
PROPERTY OWNERS NAME

DATE	
BY	
PLAN	
SURVEYED	
ALIGNED	
CHECKED	
NO. OF WAY CHECKED	
NO.	
NO.	

DATE	
BY	
PROFILE	
SURVEYED	
GRADES CHECKED	
B.M. NOTED	
STRUCTURE NOTATIONS CHECKED	
NO.	
NO.	



- LEGEND**
- ① TRAFFIC BARRIER TERMINAL, TYPE 1 (SPECIAL) TANGENT
 - ② STEEL PLATE BEAM GUARDRAIL, TYPE A, 6 FOOT POSTS
 - ③ TRAFFIC BARRIER TERMINAL, TYPE 6
 - ④ TRAFFIC BARRIER TERMINAL, TYPE 5
 - ⑤ TRAFFIC BARRIER TERMINAL, TYPE 2
- NOTES:**
 SEE SCHEDULE OF QUANTITIES FOR STATION LIMITS OF GUARDRAIL AND TRAFFIC BARRIERS TERMINALS.



705.30	702.83	700.36	697.85	695.33	692.78	690.26	687.71	685.19	682.88	680.73	678.63	676.70	675.09	673.55	672.19	671.00	669.77	668.83	668.15	667.69	667.45	667.48	667.48	667.68	667.68	668.34	669.10	669.84	670.78	671.94	
330+00	331+00	332+00	333+00	334+00	335+00	336+00	337+00	338+00	339+00	340+00	341+00	342+00	343+00	344+00																	

USER NAME = gjameson	DESIGNED -	REVISED -
FILE NAME = Z03207P&PE.dgn	CHECKED -	REVISED -
PLOT DATE = 12/6/2011	DRAWN -	REVISED -
PLOT TIME = 10:18:24 AM	CHECKED -	REVISED -

WHKS & CO.
 ENGINEERING
 1701 ROUTE 35 NORTH
 EAST DUBUQUE, IL 61025
 (815) 747-8833
 DESIGN FIRM #184001036

STATE OF ILLINOIS
 DEPARTMENT OF TRANSPORTATION

US 20 PLAN AND PROFILE
 SN 043-0004 (EB)
 SCALE: 1" = 50'
 SHEET NO. 1 OF 1 SHEETS
 STA. 330+00 TO STA. 344+00

F.A.P. RTE.	SECTION	COUNTY	TOTAL SHEETS	SHEET NO.
	(43B,44B,44HB,45B)	JO DAVIESS	309	52
CONTRACT NO. 64C94			ILLINOIS FED. AID PROJECT	