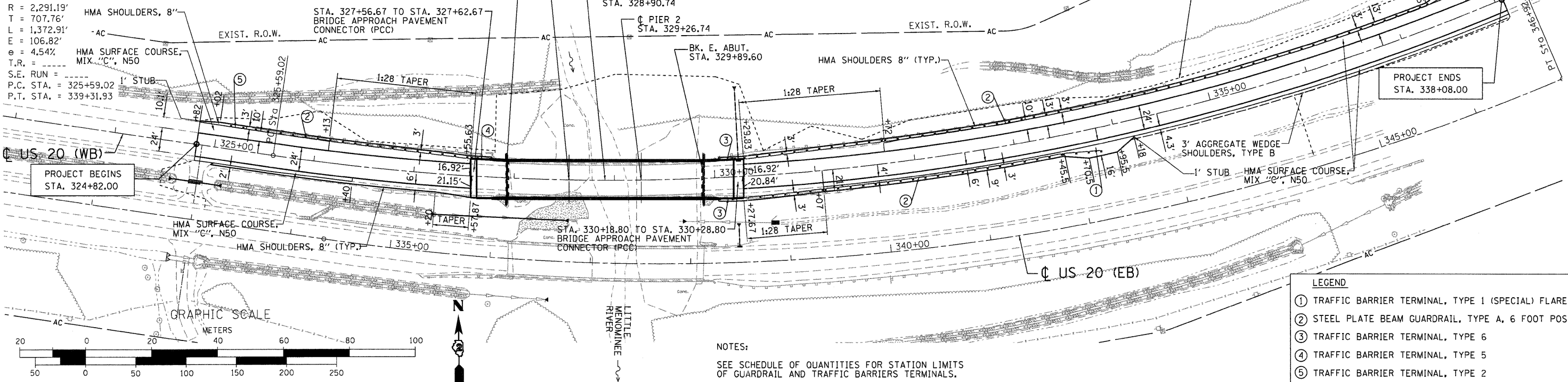


EXIST. CURVE 1280
 PI STA. = 332+66.78
 $\Delta = 34^\circ 19' 57''$ (LT)
 $D = 2^\circ 30' 03''$
 $R = 2,291.19'$
 $T = 707.76'$
 $L = 1,372.91'$
 $E = 106.82'$
 $e = 4.54\%$
 $T.R. =$
 $S.E. RUN =$
 $P.C. STA. = 325+59.02$
 $P.T. STA. = 339+31.93$

PROPERTY OWNERS NAME



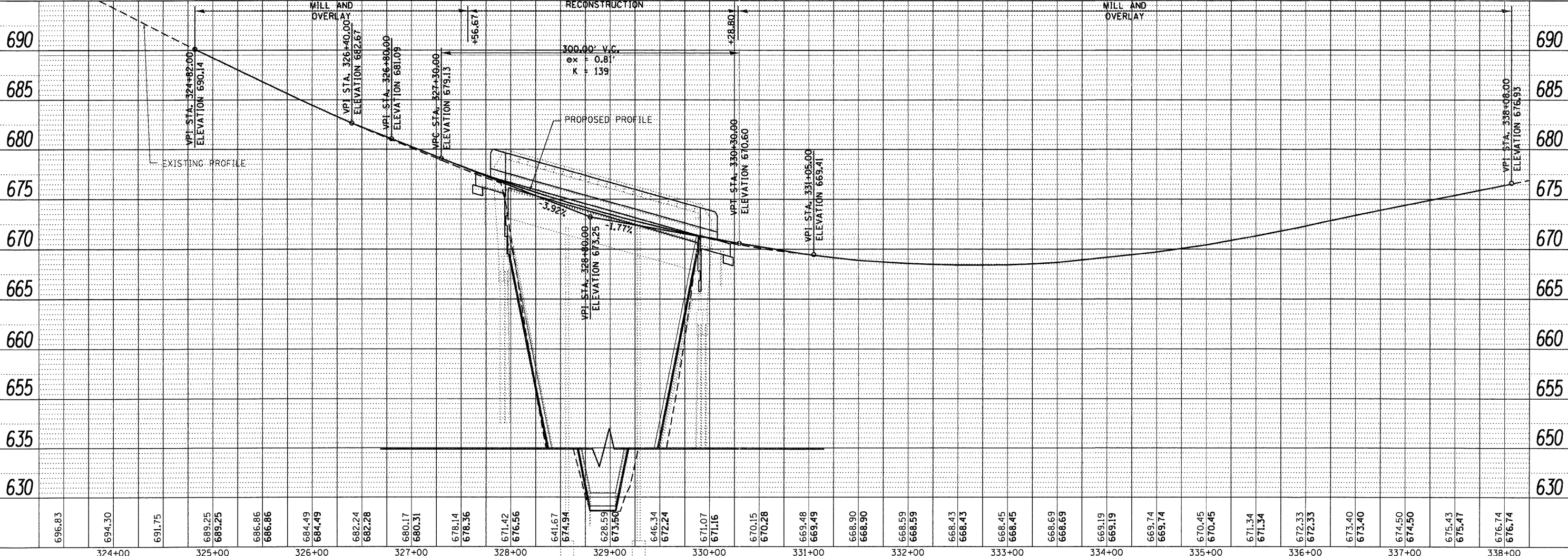
LEGEND

- ① TRAFFIC BARRIER TERMINAL, TYPE 1 (SPECIAL) FLARED
- ② STEEL PLATE BEAM GUARDRAIL, TYPE A, 6 FOOT POSTS
- ③ TRAFFIC BARRIER TERMINAL, TYPE 6
- ④ TRAFFIC BARRIER TERMINAL, TYPE 5
- ⑤ TRAFFIC BARRIER TERMINAL, TYPE 2

NOTES:
 SEE SCHEDULE OF QUANTITIES FOR STATION LIMITS OF GUARDRAIL AND TRAFFIC BARRIERS TERMINALS.

DATE	
BY	
PLAN	SURVEYED
	ALIGNED
	CHECKED
	RT. OF WAY
	CHECKED
	GRID FILE NAME
	NO.

DATE	
BY	
PROFILE	SURVEYED
	GRADES
	CHECKED
	S.M. NOTED
	STRUCTURE NOTATIONS CHRD
	NO.



696.83	694.30	691.75	689.25	689.25	686.86	686.86	684.49	684.49	682.24	682.28	680.17	680.31	678.14	678.36	671.42	676.56	641.67	674.94	628.59	673.50	646.34	672.24	671.07	671.16	670.15	670.28	669.48	669.49	668.90	668.90	668.59	668.59	668.43	668.43	668.45	668.45	668.69	668.69	669.19	669.19	669.74	669.74	670.45	670.45	671.34	671.34	672.33	672.33	673.40	673.40	674.50	674.50	675.43	675.47	676.74	676.74
324+00	325+00	326+00	327+00	328+00	329+00	330+00	331+00	332+00	333+00	334+00	335+00	336+00	337+00	338+00																																										

USER NAME = gjemerson	DESIGNED -	REVISED -
FILE NAME = 203207P&PW.dgn	CHECKED -	REVISED -
PLOT DATE = 12/6/2011	DRAWN -	REVISED -
PLOT TIME = 10:18:30 AM	CHECKED -	REVISED -

WHKS & CO.
 ENGINEERING

1701 ROUTE 35 NORTH
 EAST DUBUQUE, IL 61025
 (815) 747-8833
 DESIGN FIRM #184001036

STATE OF ILLINOIS
 DEPARTMENT OF TRANSPORTATION

US 20 PLAN AND PROFILE
 SN 043-0005 (WB)

SCALE: 1" = 50'
 SHEET NO. 1 OF 1 SHEETS
 STA. 322+00 TO STA. 336+00

F.A.P. RTE. 301	SECTION (43B,44B,44HB,45B)D	COUNTY JO DAVIESS	TOTAL SHEETS 309	SHEET NO. 53
CONTRACT NO. 64C94			ILLINOIS FED. AID PROJECT	