

SEQUENCE OF CONSTRUCTION FOR SN 043-0003

PRESTAGE

SET UP TRAFFIC CONTROL AND PROTECTION ACCORDING TO HIGHWAY STANDARD 701401. SEE HIGHWAY STANDARD FOR SIGNS AND DEVICES.

MILL 2" OFF THE INSIDE 4' OF THE EXISTING NORTH AND SOUTH HMA SHOULDERS TO REMOVE THE EXISTING RUMBLE STRIP AS SHOWN ON THE PLANS.

CONSTRUCT 2" HMA SURFACE COURSE ON THE INSIDE 4' OF THE EXISTING NORTH AND SOUTH HMA SHOULDERS.

STAGE 1

SET UP TRAFFIC CONTROL AND PROTECTION ACCORDING TO HIGHWAY STANDARD 701402. SEE HIGHWAY STANDARD FOR ADDITIONAL SIGNS AND DEVICES. SHIFT WESTBOUND TRAFFIC ONTO THE NORTH LANE.

REMOVE THE SOUTH HALF OF THE EXISTING BRIDGE, APPROACH SLABS, PAVEMENT AND SHOULDERS AS SHOWN ON THE PLANS.

CONSTRUCT THE SOUTH HALF OF THE BRIDGE, APPROACH SLABS, BRIDGE APPROACH PAVEMENT CONNECTORS AND DRAINAGE STRUCTURES AS SHOWN ON THE PLANS.

CONSTRUCT THE PROPOSED HMA SHOULDERS, SHOULDER WIDENING, STEEL PLATE BEAM GUARDRAIL, TRAFFIC BARRIER TERMINALS AND SEEDING ALONG THE SOUTH LANE.

STAGE 2

SET UP TRAFFIC CONTROL AND PROTECTION ACCORDING TO HIGHWAY STANDARD 701402. SEE HIGHWAY STANDARD FOR ADDITIONAL SIGNS AND DEVICES. SHIFT WESTBOUND TRAFFIC ONTO THE SOUTH LANE.

REMOVE THE REMAINING PORTION OF THE EXISTING BRIDGE, APPROACH SLABS, PAVEMENT AND SHOULDERS AS SHOWN ON THE PLANS.

CONSTRUCT THE REMAINING PORTION OF THE BRIDGE, APPROACH SLABS, BRIDGE APPROACH PAVEMENT CONNECTORS AND DRAINAGE STRUCTURES AS SHOWN ON THE PLANS.

CONSTRUCT THE PROPOSED HMA SHOULDERS, SHOULDER WIDENING, STEEL PLATE BEAM GUARDRAIL, TRAFFIC BARRIER TERMINALS AND SEEDING ALONG THE NORTH LANE.

STAGE 3

SET UP TRAFFIC CONTROL AND PROTECTION ACCORDING TO HIGHWAY STANDARD 701406. SEE HIGHWAY STANDARD FOR ADDITIONAL SIGNS AND DEVICES.

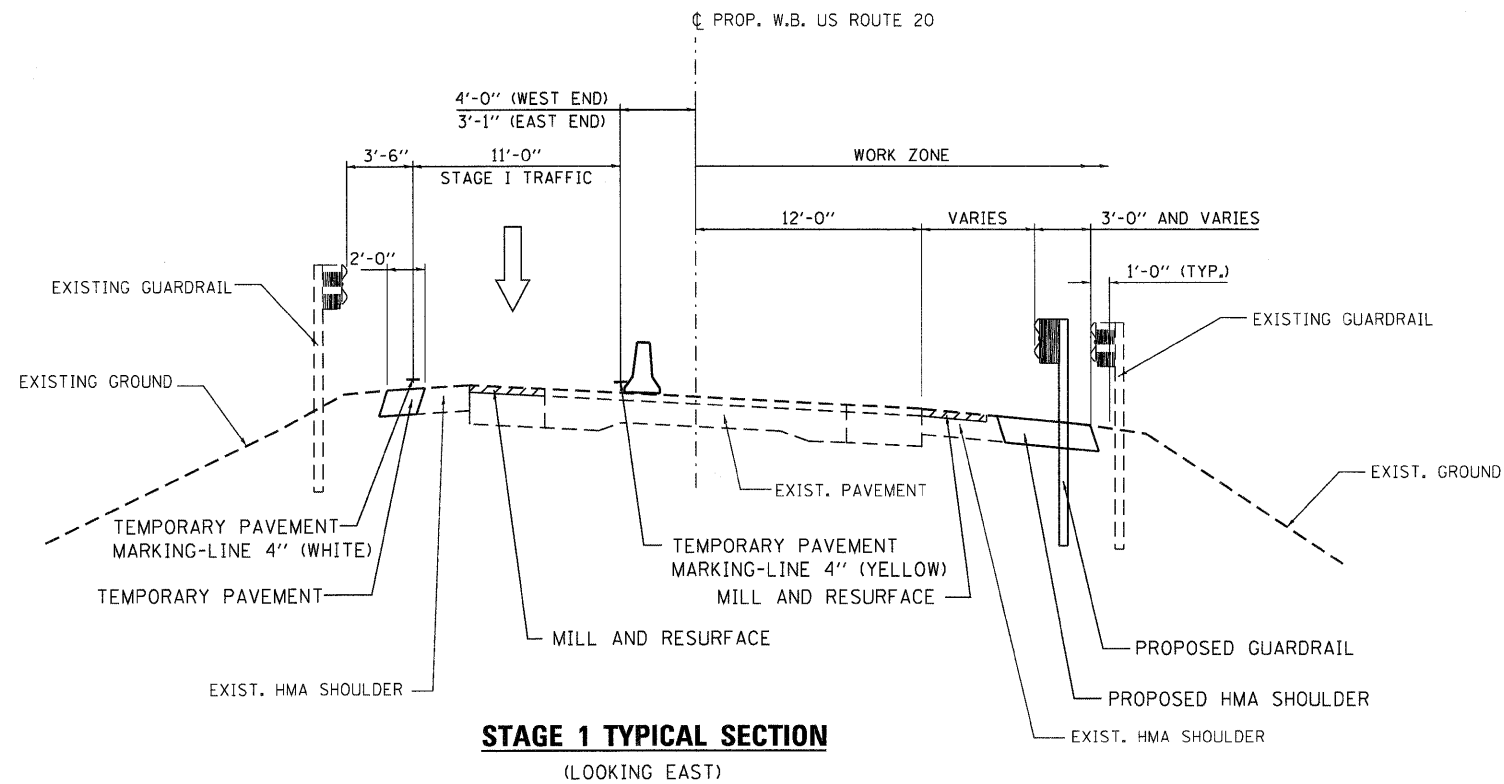
REMOVE THE GUARDRAIL AND TRAFFIC BARRIER TERMINAL RAILS IN ACCORDANCE WITH DISTRICT 2 STANDARD 23-4.

MILL AND RESURFACE THE PAVEMENT AND SHOULDERS AS SHOWN ON THE PLANS.

REPLACE THE STEEL PLATE BEAM GUARDRAIL AND TRAFFIC BARRIER TERMINAL RAILS.

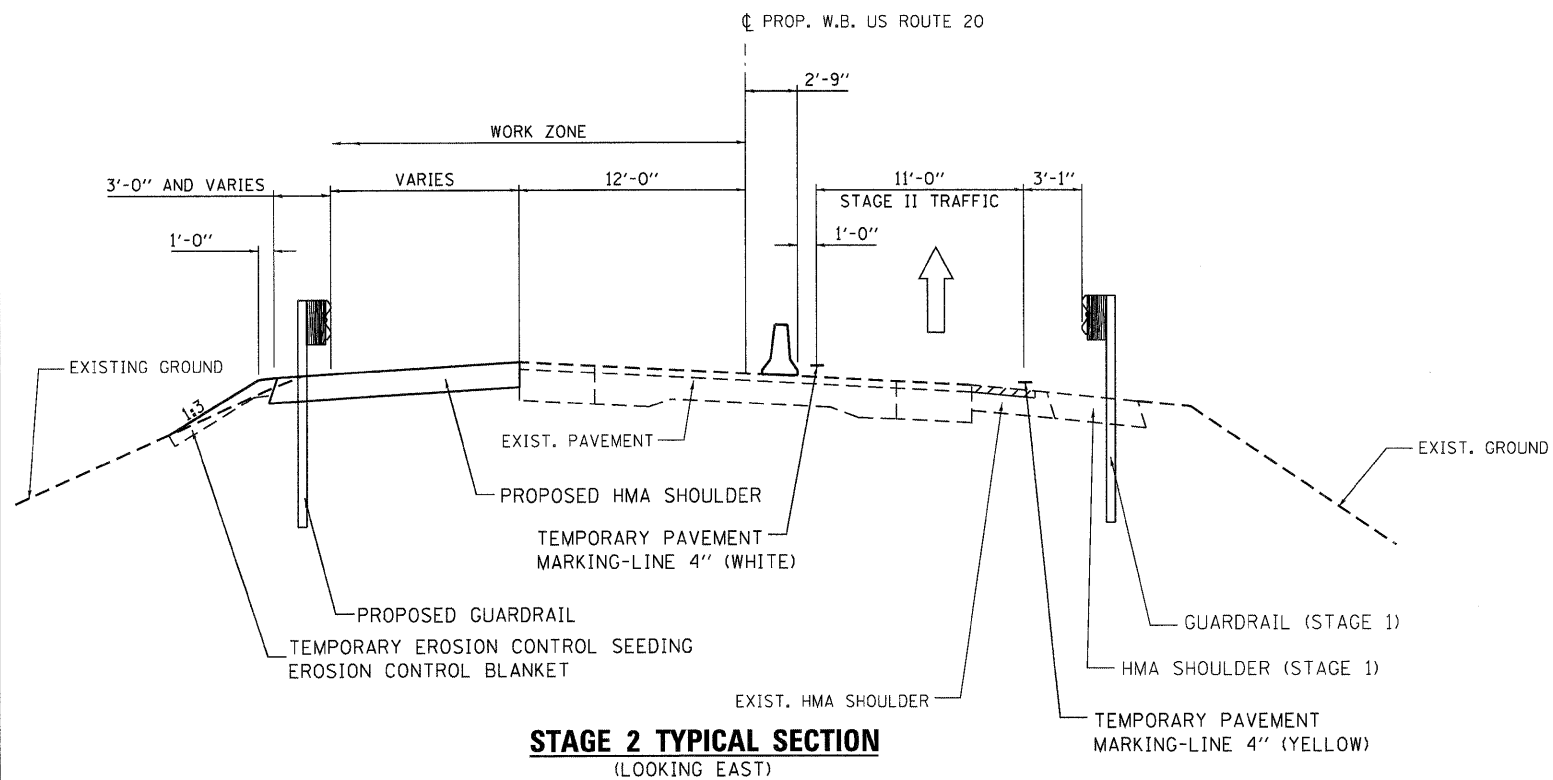
STAGE 4

SET UP TRAFFIC CONTROL AND PROTECTION ACCORDING TO HIGHWAY STANDARD 701426. SEE HIGHWAY STANDARD FOR SIGNS AND DEVICES. PLACE THE PAVEMENT STRIPING AND CLEANUP.



STAGE 1 TYPICAL SECTION

(LOOKING EAST)



STAGE 2 TYPICAL SECTION

(LOOKING EAST)

USER NAME = gjameson	DESIGNED -	REVISED -
FILE NAME = Z03207-ah-t-STAGE-1	CHECKED -	REVISED -
PLOT DATE = 12/6/2011	DRAWN -	REVISED -
PLOT TIME = 10:18:17 AM	CHECKED -	REVISED -

WHKS & CO.
 1701 ROUTE 35 NORTH
 EAST DUBUQUE, IL 61025
 (815) 747-8833
 DESIGN FIRM #184001036

**STATE OF ILLINOIS
 DEPARTMENT OF TRANSPORTATION**

**US 20 TRAFFIC CONTROL TYPICAL SECTIONS
 SN 043-0003**

SCALE: 1" = 5' SHEET NO. 1 OF 1 SHEETS STA. TO STA.

F.A.P. RTE.	SECTION	COUNTY	TOTAL SHEETS	SHEET NO.
301	(43B,44B,44HB,45B)D	JO DAVIESS	309	57
			CONTRACT NO. 64C94	
ILLINOIS FED. AID PROJECT				