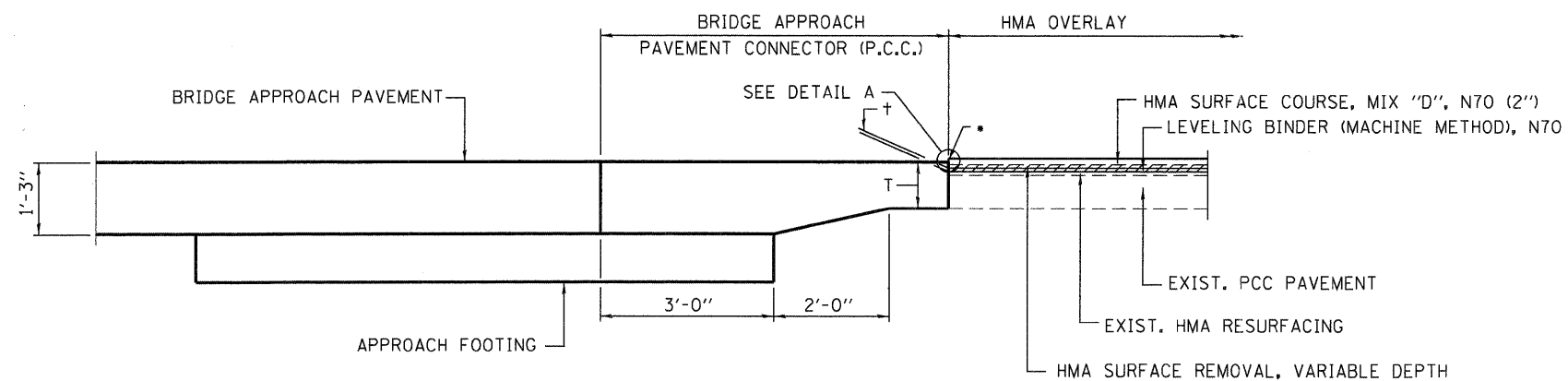


BRIDGE APPROACH PAVEMENT CONNECTOR (P.C.C.) AND BUTT JOINT DETAIL

- STA. 224+91.98 (EB) SN 043-0002
- STA. 226+95.84 (EB) SN 043-0002

DETAIL A



BRIDGE APPROACH PAVEMENT CONNECTOR (P.C.C.) AND BUTT JOINT DETAIL

- STA. 224+32.12 (WB) SN 043-0003
- STA. 226+37.18 (WB) SN 043-0003
- STA. 335+81.53 (EB) SN 043-0004
- STA. 338+53.66 (EB) SN 043-0004
- STA. 327+56.67 (WB) SN 043-0005
- STA. 330+28.80 (WB) SN 043-0005
- STA. 413+43.14 (WB) SN 043-0006
- STA. 415+45.00 (WB) SN 043-0006
- STA. 485+58.40 (EB) SN 043-0007
- STA. 488+46.74 (EB) SN 043-0007

LOCATION	EXISTING HMA RESURFACING	EXISTING PCC PAVEMENT	LEVELING BINDER (MACHINE METHOD), N70 (t)	BRIDGE APPROACH PAVEMENT (PCC)	T
	(INCH)	(INCH)	(INCH)	(FOOT)	(INCH)
SN 043-0002					
STA. 224+91.98	6	9	0.75	6.00	15.00
STA. 226+95.84	6	9	0.75	10.00	15.00
SN 043-0003					
STA. 224+32.12	2.75	7	2.25	6.00	13.50
STA. 226+37.18	2.75	7	0.75	12.00	10.50
SN 043-0004					
STA. 335+81.53	2.75	9	0.75	6.00	13.00
STA. 338+53.66	2.75	9	0.75	10.00	14.00
SN 043-0005					
STA. 327+56.67	2.25	7	1.25	6.00	12.00
STA. 330+28.80	2.25	7	0.75	10.00	10.75
SN 043-0006					
STA. 413+43.14	2.25	7		6.00	9.75
STA. 415+45.00	2.25	7		9.52	10.25
SN 043-0007					
STA. 485+58.40	2.75	9	0.75	12.00	12.50
STA. 488+46.74	2.75	9	0.75	6.00	13.50