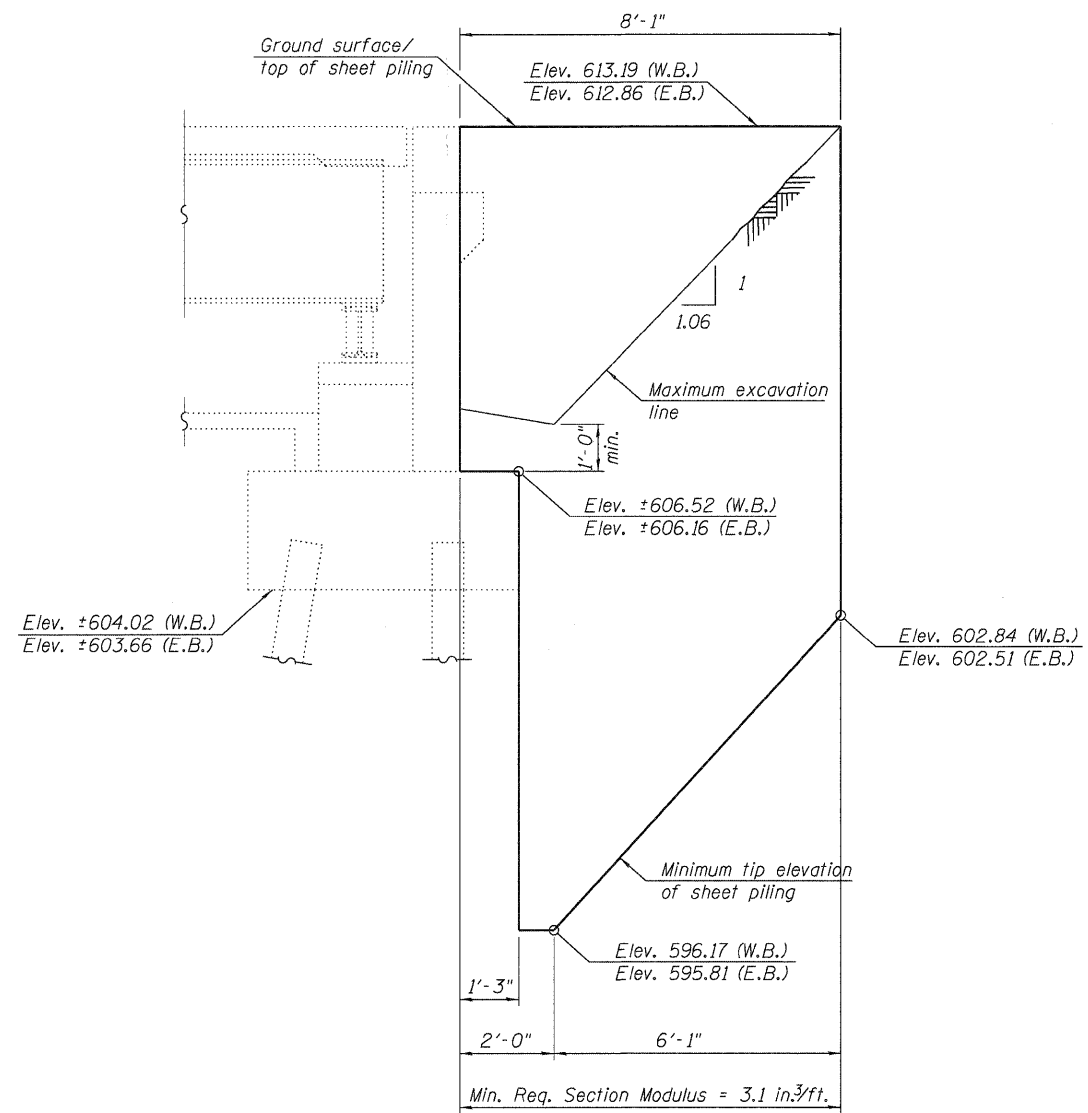


**TEMPORARY SHEET PILING AT WEST ABUTMENTS**



**TEMPORARY SHEET PILING AT EAST ABUTMENTS**

**Notes:**

If the Contractor chooses to alter the temporary cantilevered sheet piling design requirements shown on the plans, a design submittal including plan details and calculations will be required for review and acceptance by the Engineer.  
 The Contractor shall connect the first sheet to the existing abutment wall to ensure stability of sheets driven to the top of the existing footing. This connection shall be reviewed and accepted by the Engineer and included in the cost for Temporary Sheet Piling.  
 The temporary sheet Piling design is based on assumed embankment with  $q_u = 1 \text{ tsf}$ . Contractor shall verify soil conditions and soil strength and notify the Engineer if conditions are different.

**BILL OF MATERIAL**

Item	Unit	Total
Temporary Sheet Piling	Sq. Ft.	440