

Notes:
 See sheets 14 and 15 of 28 for superstructure details.
 See sheet 15 of 28 for superstructure Bill of Materials.
 See sheet 15 of 28 for parapet reinforcement.
 Bars indicated thus 32 x 6-#5 etc. indicates 32 lines of bars with 6 lengths per line.
 * See sheet 2 of 28 for location of \bar{C} EB and WB Structures relative to their Local Tangents.

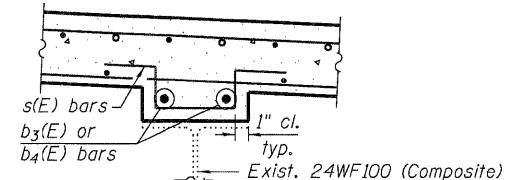
Stage I
 ** Order an additional 17 a(E) bars full length, space bars at 8 1/2" cts. top and 10" cts. bottom. Cut to fit skew and use remainder of bars in opposite end.

Stage II
 ** Order an additional 19 a1(E) bars full length, space bars at 8 1/2" cts. top and 10" cts. bottom. Cut to fit skew and use remainder of bars in opposite end.

PARTIAL PLAN

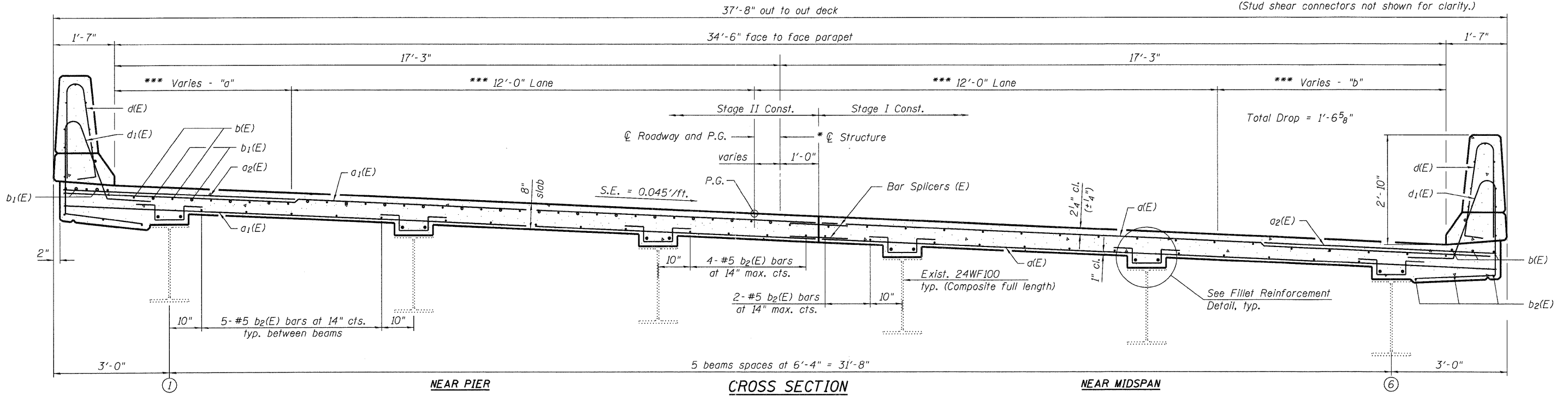
SHOULDER WIDTHS

	"a"		"b"	
	Min.	Max.	Min.	Max.
043-0002	4'-5 3/4"	5'-6 3/4"	4'-6 1/4"	6'-0 1/4"
043-0003	4'-10 1/8"	6'-5 1/4"	4'-5 3/8"	5'-7 7/8"



FILLET REINFORCEMENT DETAIL

(Structure No. 043-0003 only where fillet exceeds 6" at beams 1-6.)
 (Stud shear connectors not shown for clarity.)



CROSS SECTION
 (Looking East)

*** Designates radial dimensions normal to \bar{C} Roadway and P.G.

USER NAME = dheberling	DESIGNED - R.JN/BRD	REVISED -
FILE NAME = 043002283-64C94.dgn	CHECKED - SBC	REVISED -
PLOT DATE = 12/6/2011	DRAWN - DLH	REVISED -
PLOT TIME = 10:02:40 AM	CHECKED - SBC	REVISED -

WHKS & CO.
 ENGINEERING

7018 KINGSMILL CT.,
 SPRINGFIELD, IL
 (217) 483-9457
 DESIGN FIRM #184001036

STATE OF ILLINOIS
DEPARTMENT OF TRANSPORTATION

SUPERSTRUCTURE
STRUCTURE NO. 043-0002 & 043-0003

SHEET NO. 13 OF 28 SHEETS

F.A.P. RTE. 301	SECTION (43B, 44B, 44HB, 45B)	COUNTY JO DAVIESS	TOTAL SHEETS 309	SHEET NO. 98
ILLINOIS FED. AID PROJECT			CONTRACT NO. 64C94	