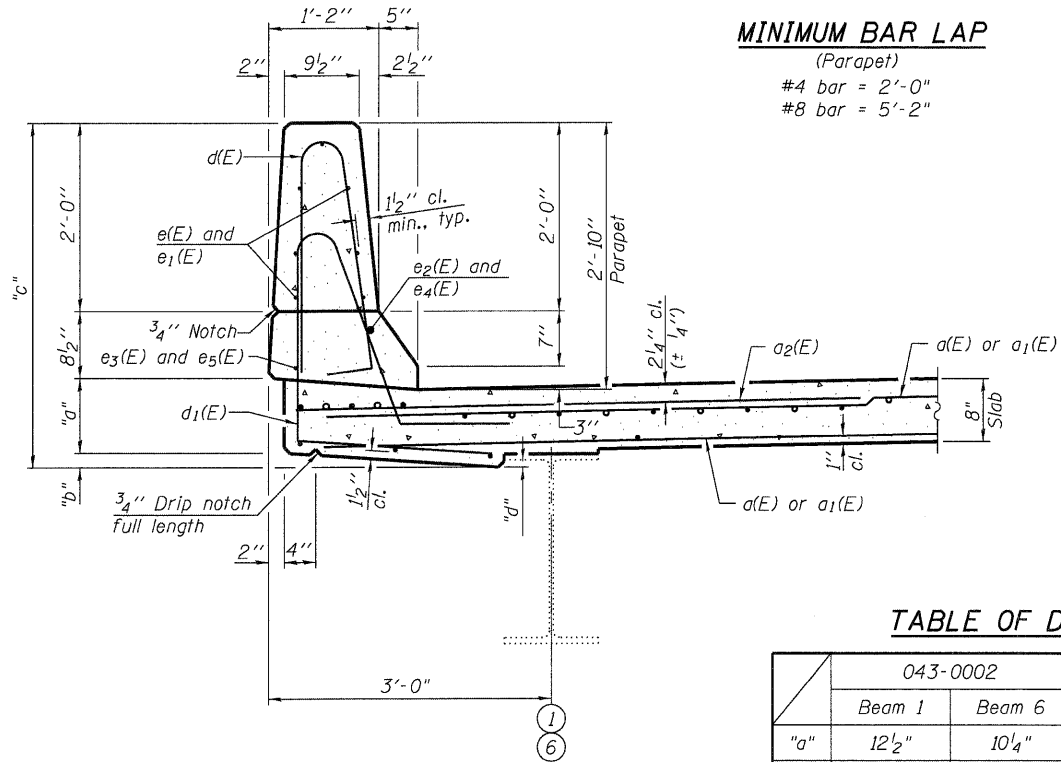


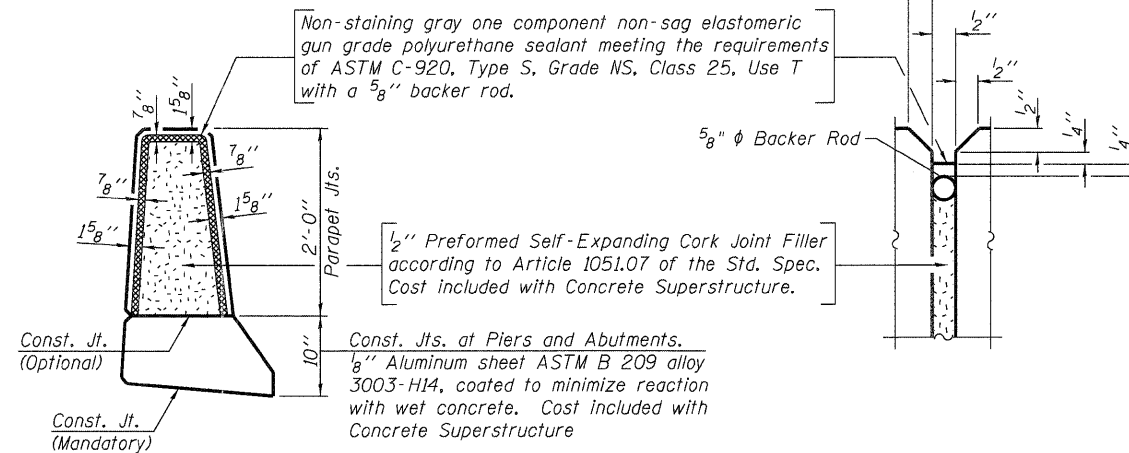
INSIDE ELEVATION OF PARAPET



SECTION THRU PARAPET

MINIMUM BAR LAP

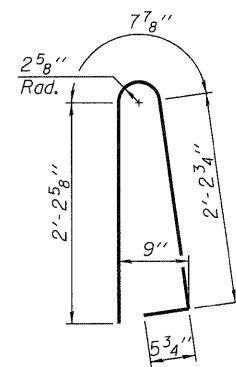
(Parapet)
 #4 bar = 2'-0"
 #8 bar = 5'-2"



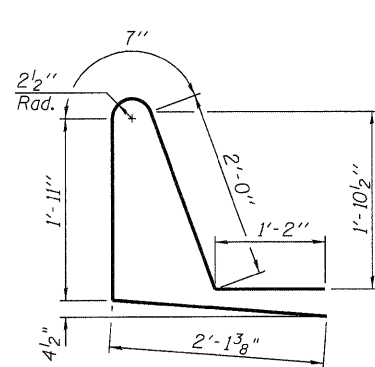
PARAPET JOINT DETAILS

TABLE OF DIMENSIONS

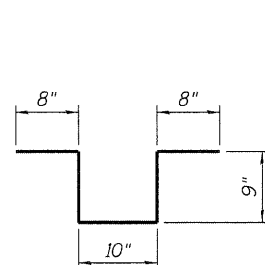
	043-0002		043-0003	
	Beam 1	Beam 6	Beam 1	Beam 6
"a"	12 1/2"	10 1/4"	14 1/8"	11 7/8"
"b"	5"	5"	5"	5"
"c"	4'-2"	3'-11 3/4"	4'-3 5/8"	4'-1 3/8"
"d"	1/4" - 4 5/8"	1/4" - 5 1/4"	1/4" - 5 1/4"	1/4" - 7 1/4"



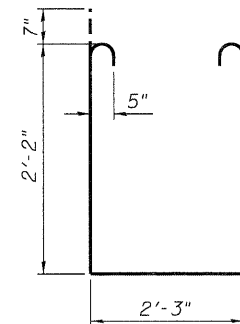
BAR d(E)



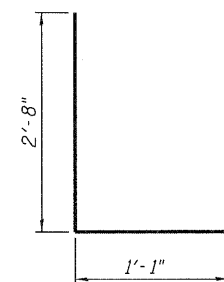
BAR d1(E)



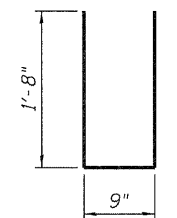
BAR s(E)



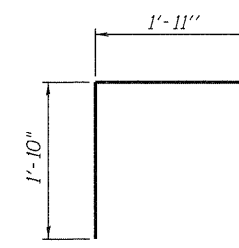
BAR s1(E)



BAR s2(E)



BAR u(E)



BAR v(E)

**TWO SUPERSTRUCTURES
 BILL OF MATERIAL**

Bar	No.	Size	Length	Shape
a(E)	670	#5	17'-5"	—
a1(E)	670	#5	19'-5"	—
a2(E)	360	#6	6'-6"	—
a3(E)	8	#5	18'-4"	—
a4(E)	8	#5	20'-6"	—
b(E)	400	#5	27'-6"	—
b1(E)	144	#6	26'-0"	—
b2(E)	384	#5	23'-5"	—
b3(E)	24	#4	23'-0"	—
b4(E)	12	#4	30'-0"	—
d(E)	560	#5	5'-7"	⌋
d1(E)	560	#5	7'-10"	⌋
e(E)	56	#4	9'-6"	—
e1(E)	196	#4	15'-2"	—
e2(E)	16	#8	22'-9"	—
e3(E)	16	#4	21'-2"	—
e4(E)	8	#8	25'-7"	—
e5(E)	8	#4	24'-0"	—
m(E)	40	#6	20'-6"	—
m1(E)	40	#6	18'-4"	—
m2(E)	32	#6	6'-5"	—
m3(E)	8	#6	4'-1"	—
m4(E)	8	#6	2'-0"	—
m5(E)	16	#6	2'-8"	—
s(E)	420	#4	3'-8"	⌋
s1(E)	152	#5	7'-9"	⌋
s2(E)	176	#5	6'-5"	⌋
u(E)	168	#5	4'-1"	⌋
v(E)	160	#5	3'-9"	⌋
Concrete Superstructure		Cu. Yd.		378.4
Reinforcement Bars, Epoxy Coated		Pound		76,270

Bars indicated thus 1 x 2-#8 etc. indicates 1 line of bars with 2 lengths per line.