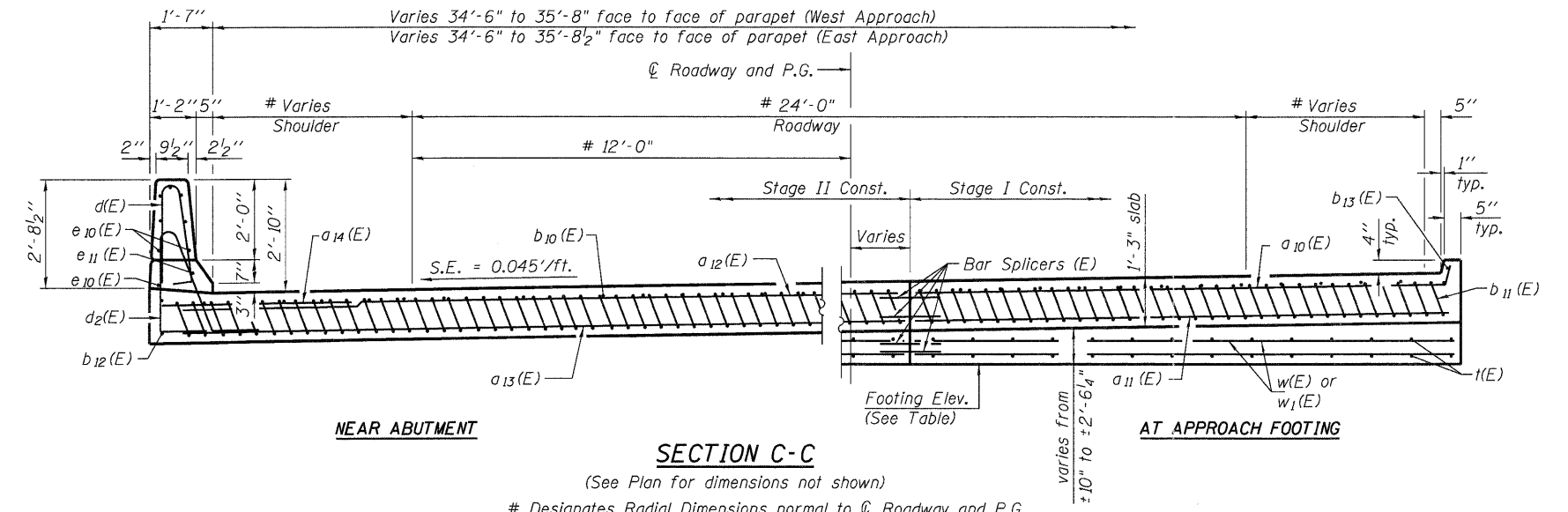
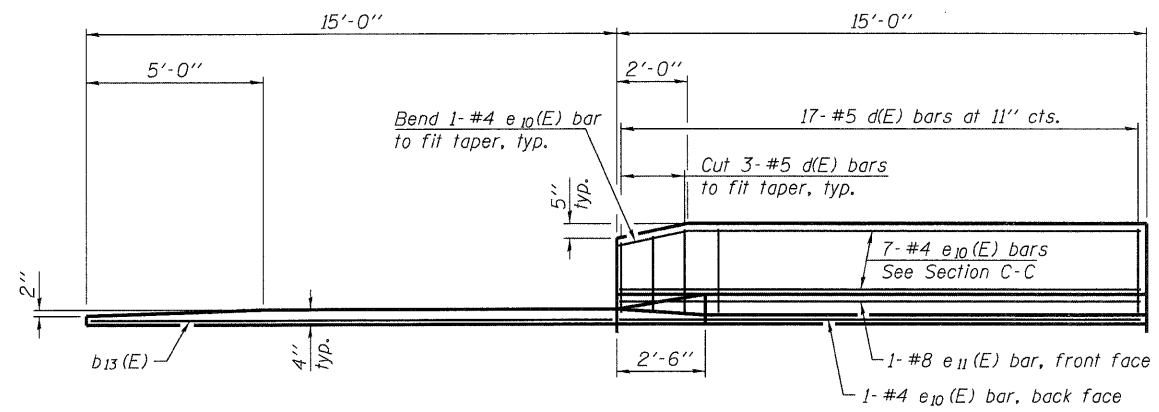


**SECTION B-B**

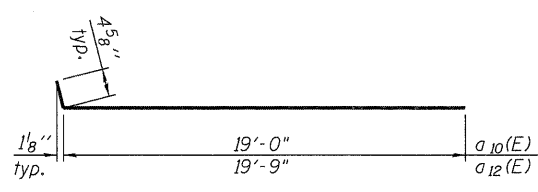


**SECTION C-C**

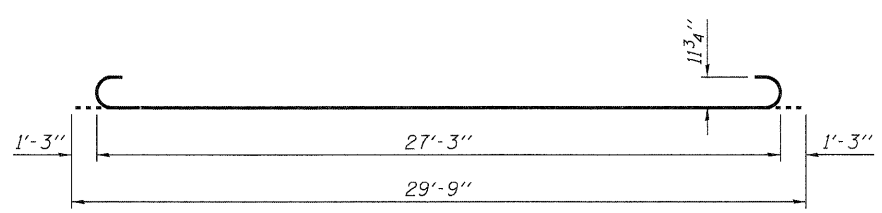
(See Plan for dimensions not shown)  
# Designates Radial Dimensions normal to  $\phi$  Roadway and P.G.



**VIEW D-D**



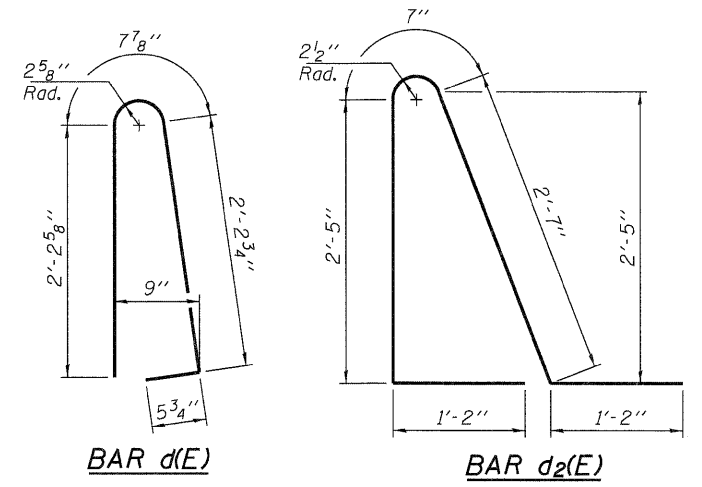
**BARS a<sub>10</sub>(E) AND a<sub>12</sub>(E)**



**BAR b<sub>11</sub>(E)**

**Notes:**

Approach slab and parapet concrete shall be paid for as Concrete Superstructure. Approach footing concrete shall be paid for as Concrete Structures. Reinforcement shall be paid for as Reinforcement Bars, Epoxy Coated. For v(E) bar details, see sheets 23 thru 26 of 28. The approach footing maximum applied service bearing pressure (Qmax) = 2.0 ksf. For bar splicer details, see sheet 27 of 28. Cost of excavation for approach footing included with Concrete Structures. For Porous Granular Embankment (Special) and drainage treatment details, see sheet 2 of 28. For additional parapet details, see sheet 14 of 28. See sheet 16 of 28 for Detail A, and View E-E.



\* Tilt #9 b<sub>11</sub>(E) bars as required to maintain clearance.  
\*\*\* Cost included with Concrete Superstructure.

**FOOTING ELEVATION TABLE**

Location	Elevation
EB West Approach	611.65
EB East Approach	609.72
WB West Approach	612.77
WB East Approach	610.01

**FOUR APPROACHES  
BILL OF MATERIAL**

Bar	No.	Size	Length	Shape
a <sub>10</sub> (E)	100	#4	19'-5"	—
a <sub>11</sub> (E)	184	#5	19'-3"	—
a <sub>12</sub> (E)	100	#4	20'-2"	—
a <sub>13</sub> (E)	184	#5	20'-0"	—
a <sub>14</sub> (E)	96	#6	6'-6"	—
b <sub>10</sub> (E)	116	#4	29'-8"	—
b <sub>11</sub> (E)	344	#9	29'-9"	U
b <sub>12</sub> (E)	8	#4	14'-8"	—
b <sub>13</sub> (E)	8	#4	14'-9"	—
d(E)	136	#5	5'-7"	L
d <sub>2</sub> (E)	136	#5	7'-11"	L
e <sub>10</sub> (E)	64	#4	14'-8"	—
e <sub>11</sub> (E)	8	#8	14'-8"	—
f(E)	312	#4	10'-2"	—
w(E)	160	#5	19'-3"	—
w <sub>1</sub> (E)	160	#5	20'-0"	—
Concrete Structure		Cu. Yd.	98.4	
Concrete Superstructure		Cu. Yd.	227.9	
Reinforcement Bars, Epoxy Coated		Pound	59,890	

BA-R 7-1-10

(Sheet 2 of 2)