

**INSIDE FACE OF NORTH PARAPET**

Location	Station	Offset	Theoretical Grade Elevations
W. end of W. Appr. Pav't.	485+76.35	-17.50	631.02
A1	485+86.44	-17.50	631.20
A2	485+96.53	-17.50	631.38
E. end of W. Appr. Pav't.	486+06.61	-17.50	631.55

**NORTH EDGE OF PAVEMENT**

Location	Station	Offset	Theoretical Grade Elevations
W. end of W. Appr. Pav't.	485+74.47	-12.00	631.24
A1	485+84.53	-12.00	631.42
A2	485+94.59	-12.00	631.59
E. end of W. Appr. Pav't.	486+04.65	-12.00	631.77

**☉ ROADWAY, P.G. AND STAGE CONSTRUCTION LINE**

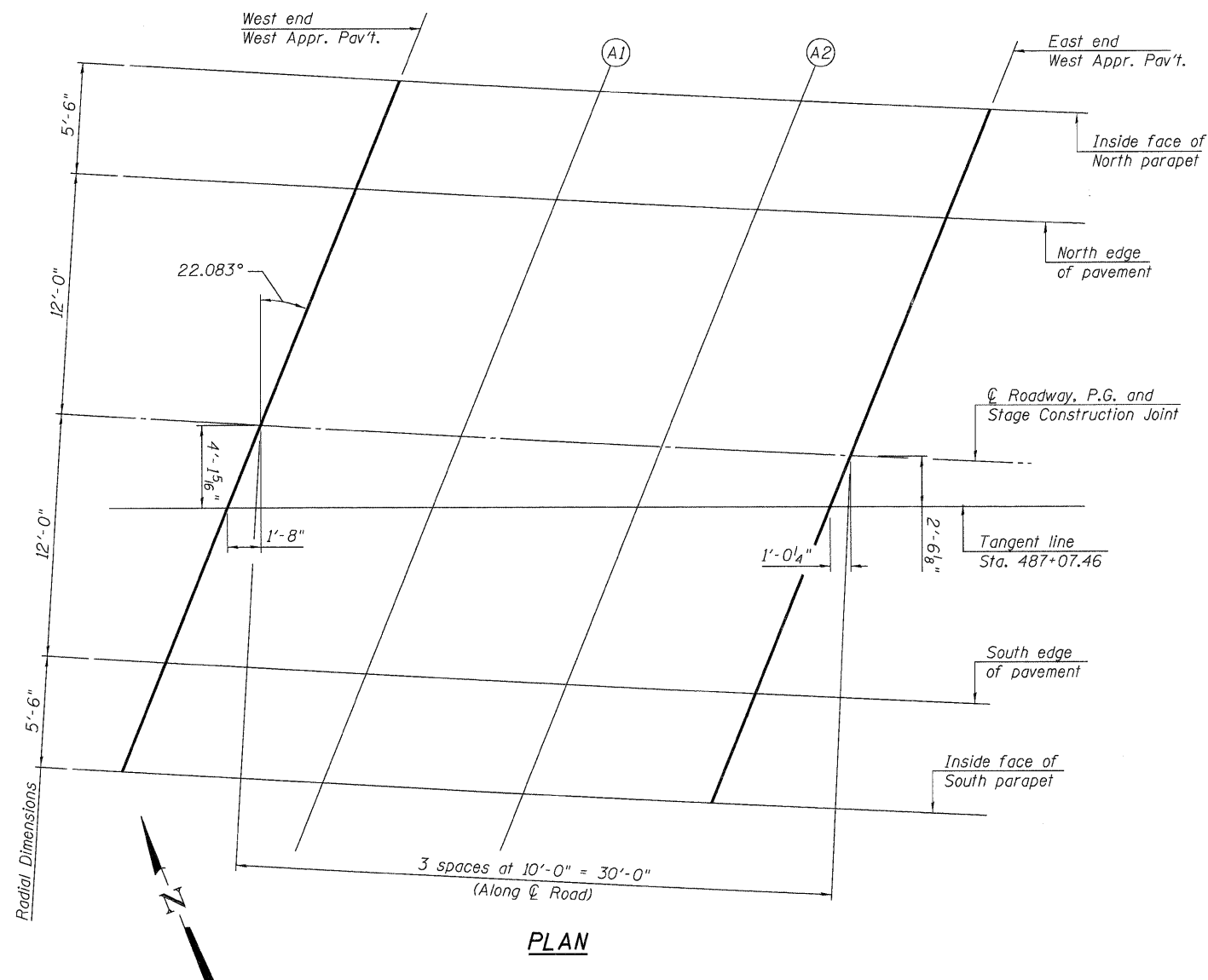
Location	Station	Offset	Theoretical Grade Elevations
W. end of W. Appr. Pav't.	485+70.40	0.00	631.71
A1	485+80.40	0.00	631.88
A2	485+90.40	0.00	632.06
E. end of W. Appr. Pav't.	486+00.40	0.00	632.24

**SOUTH EDGE OF PAVEMENT**

Location	Station	Offset	Theoretical Grade Elevations
W. end of W. Appr. Pav't.	485+66.37	12.00	632.18
A1	485+76.32	12.00	632.35
A2	485+86.26	12.00	632.53
E. end of W. Appr. Pav't.	485+96.20	12.00	632.70

**INSIDE FACE OF SOUTH PARAPET**

Location	Station	Offset	Theoretical Grade Elevations
W. end of W. Appr. Pav't.	485+64.54	17.50	632.39
A1	485+74.46	17.50	632.57
A2	485+84.37	17.50	632.74
E. end of W. Appr. Pav't.	485+94.29	17.50	632.92



**PLAN**