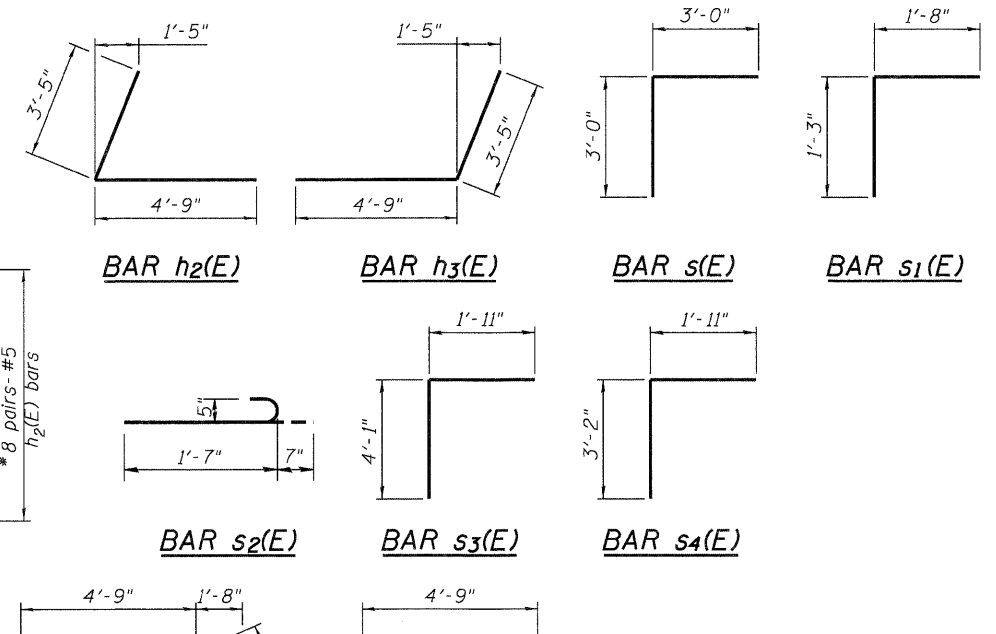
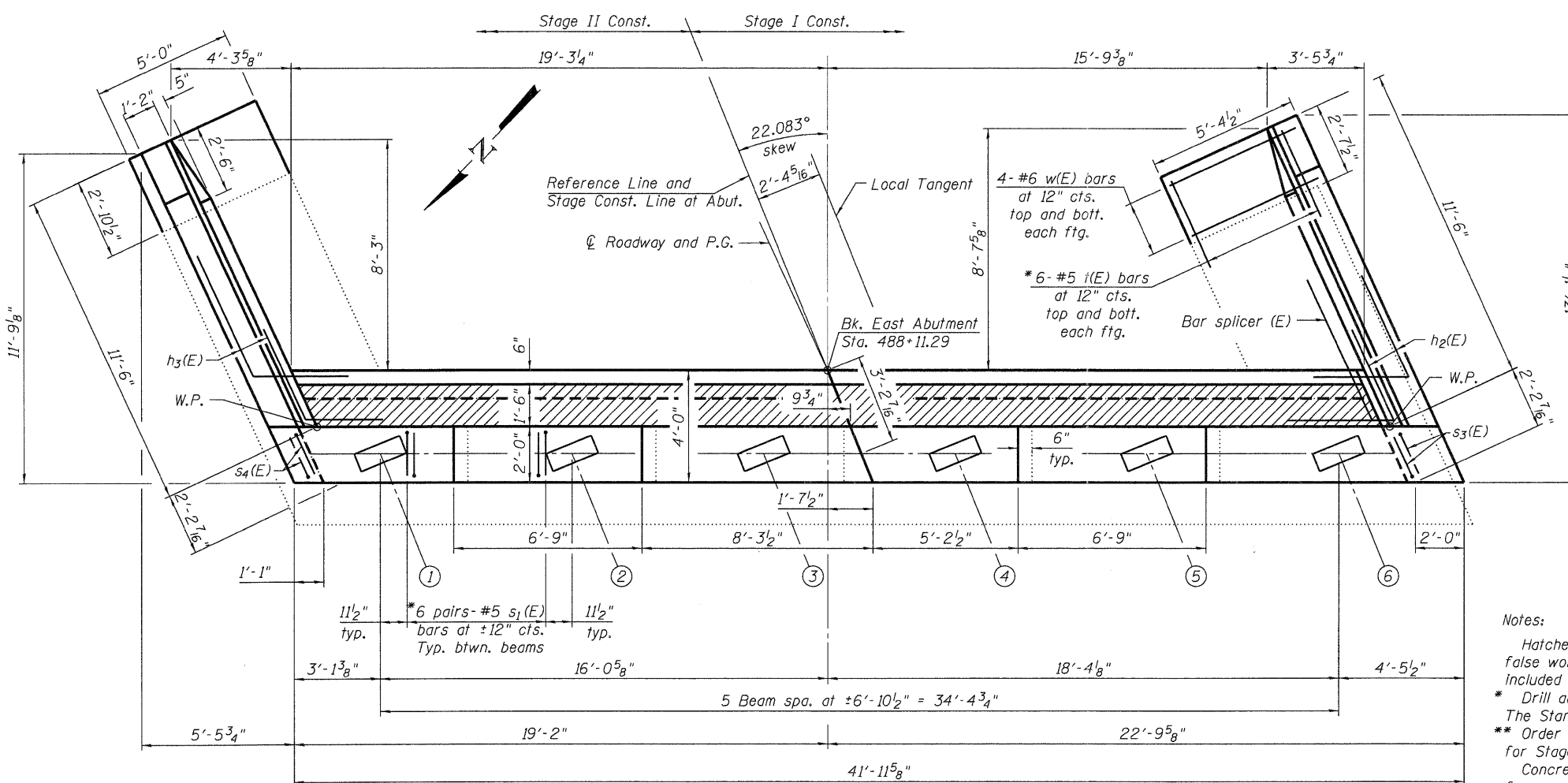


**ELEVATION**  
(Looking East)



**EAST ABUTMENT  
BILL OF MATERIAL**

Bar	No.	Size	Length	Shape
h(E)	28	#5	20'-6"	—
h1(E)	10	#6	19'-0"	—
h2(E)	16	#5	8'-2"	L
h3(E)	18	#5	8'-2"	L
h4(E)	12	#5	6'-7"	—
h5(E)	28	#4	11'-3"	—
h6(E)	20	#4	11'-3"	—
h7(E)	6	#5	9'-0"	—
s(E)	40	#5	6'-0"	Γ
s1(E)	60	#5	2'-11"	Γ
s2(E)	40	#5	2'-2"	Γ
s3(E)	6	#5	6'-0"	L
s4(E)	4	#5	5'-1"	L
h(E)	24	#5	3'-2"	—
u(E)	4	#6	11'-4"	Γ
u1(E)	3	#6	10'-5"	Γ
v(E)	40	#5	3'-9"	Γ
v1(E)	40	#4	2'-11"	Γ
v2(E)	20	#5	11'-7"	Γ
v3(E)	40	#5	4'-1"	Γ
v4(E)	12	#6	19'-11"	Γ
v5(E)	3	#6	9'-10"	Γ
v6(E)	9	#6	10'-7"	Γ
v7(E)	3	#6	8'-9"	Γ
v8(E)	9	#6	9'-6"	Γ
v9(E)	48	#6	4'-10"	Γ
v10(E)	16	#5	1'-6"	Γ
w(E)	16	#6	4'-9"	—
Structure Excavation			Cu. Yd.	106
Concrete Structures			Cu. Yd.	31.4
Reinforcement Bars, Epoxy Coated			Pound	4,300
Concrete Sealer			Sq. Ft.	305



**PLAN**

**Notes:**  
 Hatched area to be poured after superstructure false work has been removed. Quantity of concrete included with Concrete Superstructure.  
 \* Drill and grout bars according to Article 584 of The Standard Specifications, 9" min. embedment.  
 \*\* Order v2(E) bars full length, cut to fit and use remainder for Stage II Const.  
 Concrete sealer is applied to new abutment seats and face and to front face of backwall.  
 Drill front leg of u(E), u1(E), h2(E), and h3(E) bars into existing concrete. Cut h2(E) and h3(E) leg to fit embedment when drilled into existing concrete.

USER NAME = dheberling	DESIGNED - BRD	REVISED -
FILE NAME = B430007-64C94.dgn	CHECKED - CWC/SDS	REVISED -
PLOT DATE = 12/6/2011	DRAWN - DLH	REVISED -
PLOT TIME = 10:11:07 AM	CHECKED - BRD	REVISED -

**WHKS & CO.**  
ENGINEERING

7018 KINGSMILL CT.,  
SPRINGFIELD, IL  
(217) 483-9457  
DESIGN FIRM #184001036

**STATE OF ILLINOIS  
DEPARTMENT OF TRANSPORTATION**

**EAST ABUTMENT  
STRUCTURE NO. 043-0007**

SHEET NO. 25 OF 27 SHEETS

F.A.P. RTE. 301	SECTION (43B, 44B, 44HB, 45BD)	COUNTY JO DAVIESS	TOTAL SHEETS 309	SHEET NO. 186
CONTRACT NO. 64C94			ILLINOIS FED. AID PROJECT	