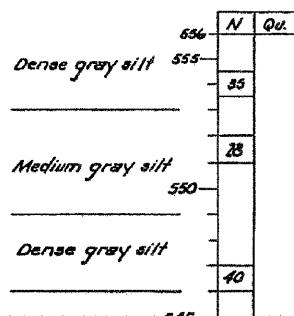
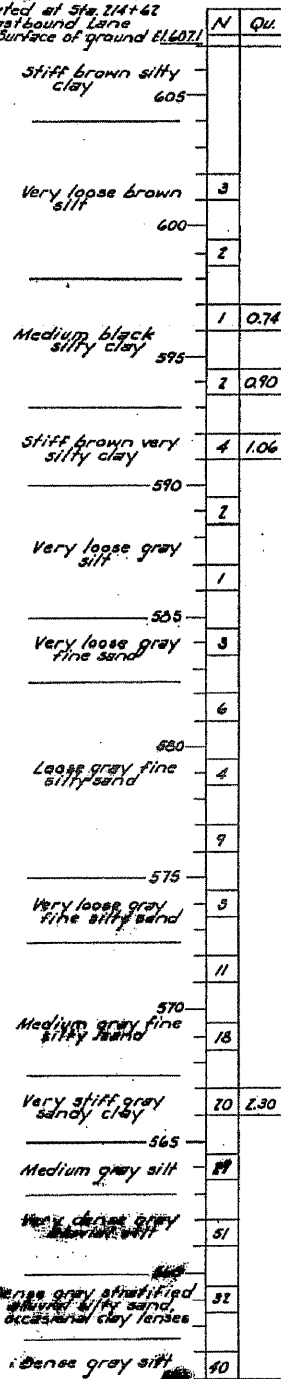


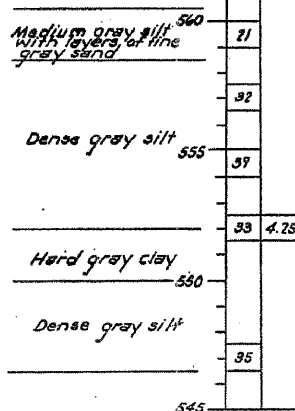
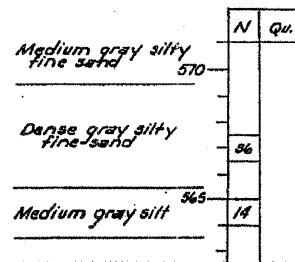
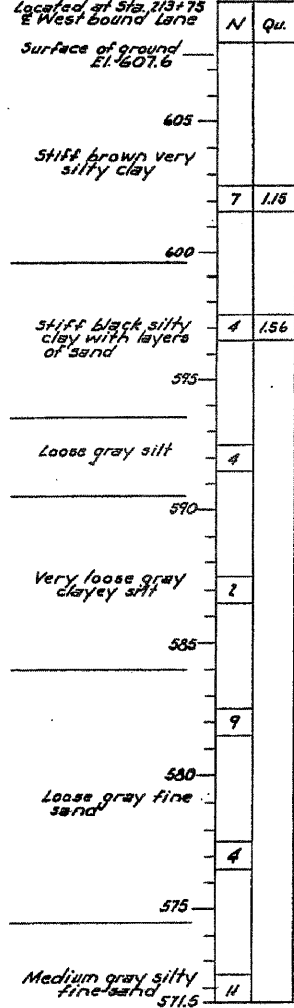
STATE OF ILLINOIS
DEPARTMENT OF PUBLIC WORKS & BUILDINGS
DIVISION OF HIGHWAYS

ROUTE NO.	SECTION	COUNTY	TOTAL SHEETS	SHEET NO.
5	43B	JO DAVIESS	27	12
SHEET NO. 8 9 SHEETS				

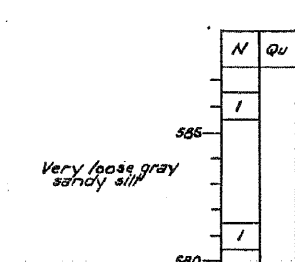
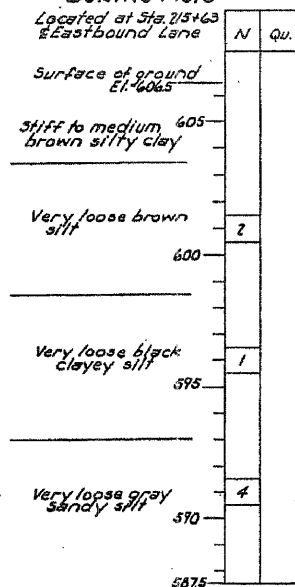
BORING No. 1
Located at Sta. 214+62
E Eastbound Lane
Surface of ground El. 607.1



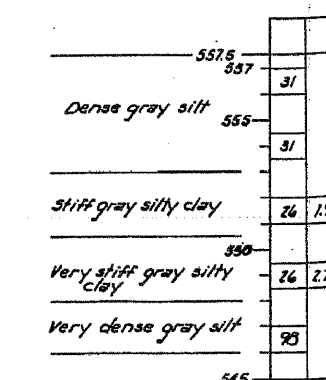
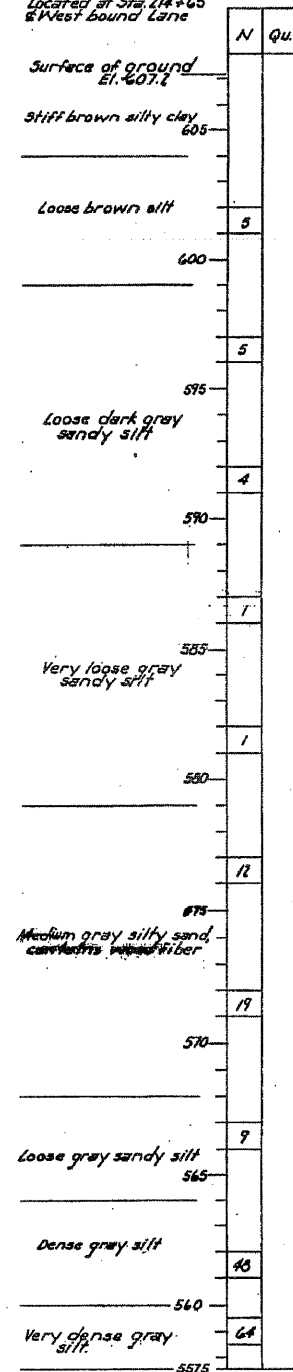
BORING No. 2
Located at Sta. 213+75
E Westbound Lane
Surface of ground El. 607.6



BORING No. 3
Located at Sta. 215+63
E Eastbound Lane
Surface of ground El. 606.5



BORING No. 4
Located at Sta. 214+65
E Westbound Lane
Surface of ground El. 607.4



Notes:
N = Blows per foot of penetration of sampling spoon. Hammer Weight = 350 lbs.
Drop = 12"
Qu = Unconfined compressive strength in Tons per sq. ft.

DESIGNED W. B. Santi
CHECKED C. W. Bluh
DRAWN JRS
CHECKED C. W. Bluh

EXAMINED W. E. Baumann
PASSED [Signature]
APPROVED [Signature]

FEB 8 1963

BORING DATA
S.B.I.R. 5 SEC. 43-B
JO DAVIESS COUNTY
STA. 214 + 35 (W.B.)
STA. 215 + 00 (E.B.)