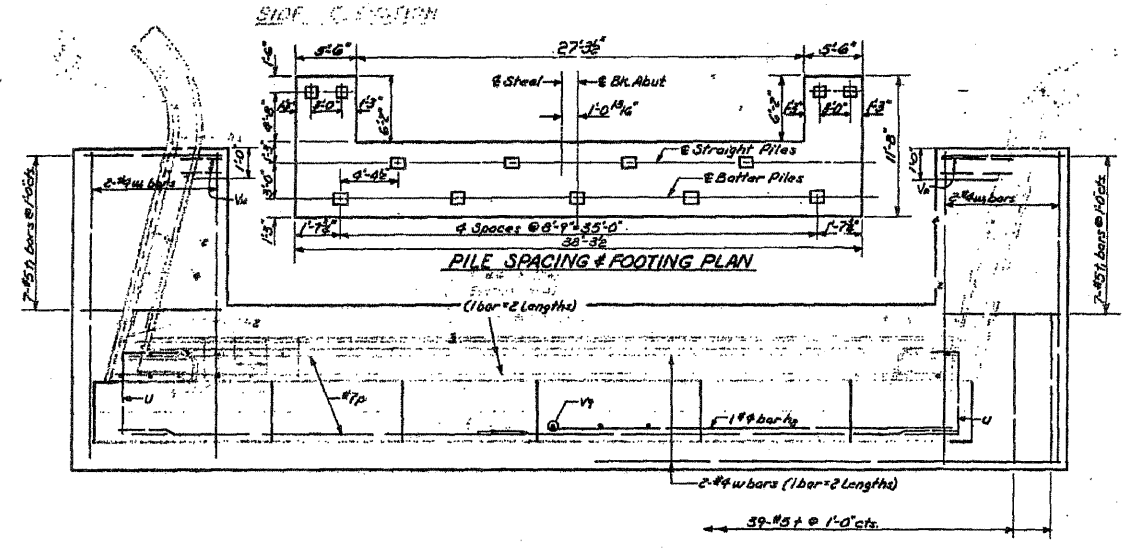
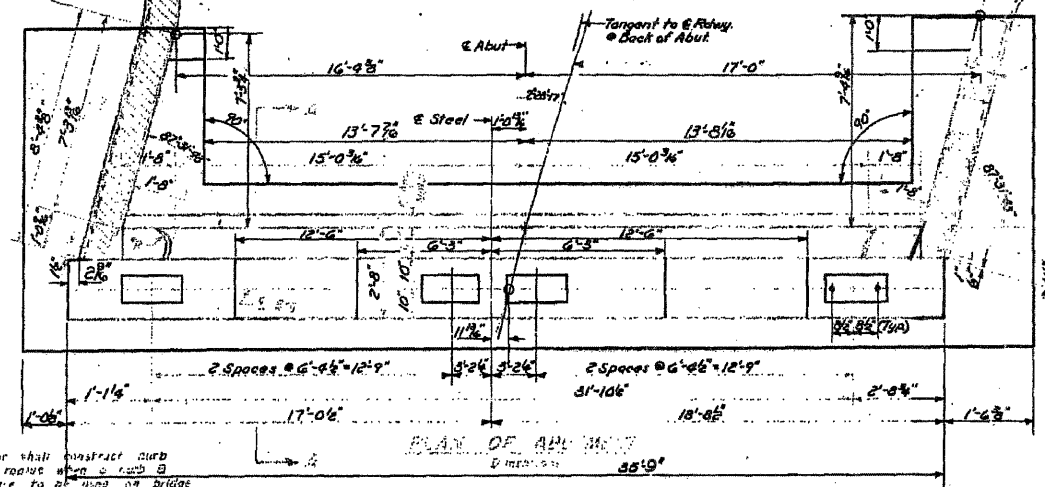
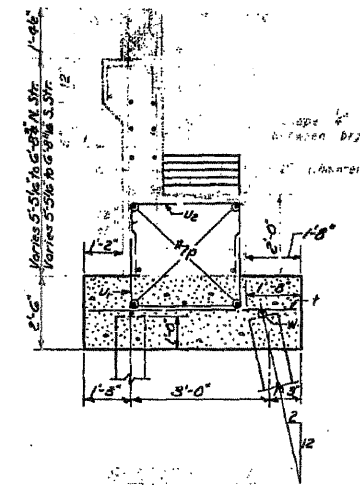
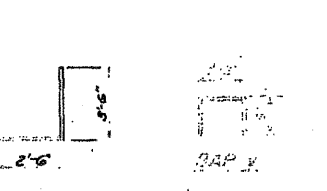
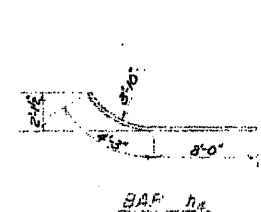
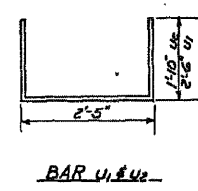


Elevations and Dimensions are at Back of Abutments  
 Type - 10BP42  
 Capacity - 33 Tons  
 Est. Length - N. Str. 20'-0"  
 S. Str. 23'-0"  
 No. Req'd - 24 + 2 Test Piles (2 Abuts)



\* Note: Contractor shall construct curb without parapet when a curb is gutter are to be used on bridge approaches (See Note D.204)

Note: See Sheet No. 6 for Pile Detail



**BILL OF REINFORCEMENT NORTH AND SOUTH STRUCTURES**

ITEM	QTY	SIZE	LENGTH	WEIGHT	REMARKS
U1	48	#4	17'-6"	8	
U2	16	#4	15'-6"	4	
U3	44	#4	6'-0"	72	
U4	24	#4	9'-3"	72	
U5	2	#4	12'-3"	60	
U6	2	#4	10'-3"	136	
V1	24	#7	19'-6"	48	
V2	28	#7	19'-6"	72	
V3	20	#4	5'-0"	20	
V4	8	#6	8'-6"	8	
V5	78	#5	6'-3"	8	
V6	28	#5	4'-9"	8	

**BILL OF MATERIAL NORTH AND SOUTH STRUCTURE**

Concrete	106.5
Steel Piles (10BP42) Lin. Ft	5650
Steel Test Piles (10BP42) Each	2

DEC. 4 '57  
 T. Tanaka  
 J.L. Armstrong  
 R.H. Bartelme

**WEST ABUTMENTS NORTH & SOUTH STRUCTURES**  
 LITTLE MENOMINEE RIVER  
 S.B.I. RT. 5 SEC. 44 B  
 JO DAVIESS COUNTY  
 STA. 318 + 30